

# Complex Analysis

**Instructor:** Jianping Jiang

**Notes Taker:** Zejin Lin

TSINGHUA UNIVERSITY.

linzj23@mails.tsinghua.edu.cn

[lzmjmaths.github.io](https://lzmjmaths.github.io)

December 29, 2024

If you have any problem or want to cooperate, please contact me.

## Contents

<b>2</b>	<b>Complex Functions</b>	<b>5</b>
2.1	Analytic functions and rational functions . . . . .	5
2.1.1	Harmonic function . . . . .	5
2.1.2	Polynomials and rational function . . . . .	5
2.2	Power Series . . . . .	8
2.2.1	Power series . . . . .	8
2.3	Exponential, Trigonometric and Logarithmic Functions . . . . .	8
2.3.1	Exponential and Trigonometric function . . . . .	8
2.3.2	Logarithmic Functions . . . . .	8

<b>3</b>	<b>Conformal Mappings</b>	<b>9</b>
3.1	Basic topology . . . . .	9
3.1.1	Connectedness . . . . .	9
3.1.2	Compactness . . . . .	10
3.1.3	Continuous Functions . . . . .	10
3.2	Conformality, geometric consequences of the existence of a derivative	10
3.2.1	Arcs and closed curves . . . . .	10
3.2.2	Analytic Functions in Regions . . . . .	11
3.2.3	Conformal Mappings . . . . .	11
3.2.4	Length and Area . . . . .	12
3.3	Möbius Transformation . . . . .	12
3.3.1	Cross ratio . . . . .	13
3.3.2	Symmetry . . . . .	14
3.3.3	Steiner Circles, circular net . . . . .	16
3.4	Elementary Conformal mapping . . . . .	17
3.4.1	Elementary Riemann surfaces . . . . .	18
<b>4</b>	<b>Complex Integration</b>	<b>19</b>
4.1	Fundamental Theorems . . . . .	19
4.1.1	Line integral and rectifiable arcs . . . . .	19
4.1.2	The fundamental theorem of Calculus for integrals in $\mathbb{C}$ . . .	20
4.1.3	Cauchy's theorem for a rectangle . . . . .	23
4.1.4	Cauchy's Theorem for a disk . . . . .	24
4.2	Cauchy's integral formula . . . . .	26
4.2.1	Index of a point with respect to a closed curve . . . . .	26
4.2.2	Cauchy's integral formula . . . . .	27
4.2.3	Higher derivatives . . . . .	29

4.2.4	Consequences of Cauchy . . . . .	30
4.3	Local properties of analytic functions . . . . .	32
4.3.1	Removable Singularities and Taylor's Theorem . . . . .	32
4.3.2	Zeros and poles . . . . .	35
4.3.3	The Local Mappings . . . . .	39
4.3.4	The Maximum Principle . . . . .	43
4.4	The General Form of Cauchy's Theorem . . . . .	44
4.4.1	Chains and Cycles . . . . .	44
4.4.2	Simple connectivity and homology . . . . .	44
4.4.3	The general form of Cauchy's theorem . . . . .	45
4.5	The Calculus of Residues . . . . .	47
4.5.1	The Residue Theorem . . . . .	47
4.5.2	The Argument Principle . . . . .	50
4.5.3	Evaluation of Definite integrals . . . . .	52
4.6	Harmonic Functions . . . . .	57
4.6.1	Definition and basis properties . . . . .	57
4.6.2	The Mean-value Property . . . . .	59
4.6.3	Poisson's Formula . . . . .	61
4.6.4	Schwarz's Theorem . . . . .	63
4.6.5	The Reflection Principle . . . . .	64
<b>5</b>	<b>Series and Product Representations</b>	<b>67</b>
5.1	Power Series Expansions . . . . .	67
5.1.1	Weierstrass's Theorem . . . . .	67
5.1.2	The Taylor Series . . . . .	68
5.1.3	Laurent Series . . . . .	69
5.2	Partial Fractions and Factorization . . . . .	72

5.2.1	Partial fractions . . . . .	72
5.2.2	Infinite Products . . . . .	75
5.2.3	Canonical Products . . . . .	76
5.2.4	The Gamma Function . . . . .	80
5.3	Entire Functions . . . . .	83
5.3.1	Jensen's formula . . . . .	83
5.3.2	Order of an entire function . . . . .	85
5.4	The Riemann Zeta Function . . . . .	85
<b>6</b>	<b>Riemann Mapping Theorem</b>	<b>91</b>
6.1	Normal families . . . . .	91
6.1.1	The Arzela-Ascoli Theorem . . . . .	91
6.1.2	Montel's Theorem . . . . .	95
6.1.3	Marty's Theorem . . . . .	95
6.2	The Riemann Mapping Theorem . . . . .	98
6.2.1	Statement and proof . . . . .	98
	<b>Index</b>	<b>101</b>
	<b>List of Theorems</b>	<b>103</b>

## 2 Complex Functions

### 2.1 Analytic functions and rational functions

#### 2.1.1 Harmonic function

**Definition 2.1** (Cauchy-Riemann equation).

$$\frac{\partial u}{\partial x} = \frac{\partial v}{\partial y}, \quad \frac{\partial u}{\partial y} = -\frac{\partial v}{\partial x}$$

**Definition 2.2** (Harmonic function). A function  $u$  is **harmonic** if it satisfied **Laplace equation**  $\triangle u = 0$ .

If two harmonic function  $u$  and  $v$  satisfies Cauchy-Riemann equations, then we say that  $v$  is **conjugate harmonic function of**  $u \Rightarrow u$  is conjugate harmonic of  $-v$ .

#### 2.1.2 Polynomials and rational function

The polynomial  $P(z) = \sum_{j=0}^n a_j z^j$  is analytic in  $\mathbb{C}$ .

We will prove the fundamental theorem of algebra

**Theorem 2.3** (Fundamental Theorem of Algebra). *Every polynomial with degree  $n > 0$  has at least one point.*

**Theorem 2.4** (Gauss-Lucus theorem). *The smallest convex polygon that contain the zeros of  $P$  also contains the zeros of  $P'$ .*

*Proof.* Only need to check.

We can get this equation.

$$\frac{P'(\alpha)}{P(\alpha)} = \sum_{j=1}^n \frac{1}{\alpha - \alpha_j} = 0 \Rightarrow \sum_{j=1}^n \frac{\overline{\alpha - \alpha_j}}{|\alpha - \alpha_j|^2}$$

Hence  $\alpha$  is linearly represented by  $\alpha_j$ . □

**Proposition 2.5.** *Let  $P$  and  $Q$  be two polynomial with no common zeros. Then the rational function  $R(z) = \frac{P(z)}{Q(z)}$  is analytic away from the zeros of  $Q$ .*

*The zeros of  $Q$  are called **poles** of  $R$ , and the **order of a pole** is equal to the order of the corresponding zero of  $Q$ .*

We often view  $R$  as a function from  $\hat{\mathbb{C}}$  to  $\hat{\mathbb{C}}$ .  $R_1(z) := R(\frac{1}{z})$ .

If  $R_1(0) = 0$ , the order of the zero at  $\infty$  (of  $R$ ) is the order of the zero of  $R_1(z)$  at  $z = 0$ .

If  $R_1(0) = \infty$ , the order of the pole at  $\infty$  (of  $R$ ) is the order of the pole of  $R_1(z)$  at  $z = 0$ .

Suppose

$$R(z) = \frac{a_n z^n + \cdots + a_1 z + a_0}{b_m z^m + \cdots + b_1 z + b_0}, a_n \neq 0, b_m \neq 0$$

Then

$$R_1(z) = z^{m-n} \frac{a_0 z^n + \cdots + a_n}{b_0 z^m + \cdots + b_m}$$

By discussing  $m$  and  $n$ , we can infer the situation of  $R(z)$  at  $\infty$ .

By adding the order of poles and zeros at  $\infty$ , we can get the following theorem.

**Theorem 2.6.** *The total number of zeros and poles of a rational function are the same.*

**Remark 2.7.** This common number is called the **order of the rational function**.

**Corollary 2.8.** *Suppose a rational function  $R$  has order  $p$ . Then every equation  $R(z) = a$  has exactly  $p$  roots.*

*Proof.*  $\hat{R}(z) = R(z) - a$  has the same poles as  $R$ . □

A rational function of order 1 is a **linear fraction**  $R(z) = \frac{az+b}{cz+d}, ad - bc \neq 0$

Such fraction is often called **Möbius transformation**

Every rational function has a representation by **partial fractions**.

- If  $R$  has a pole at  $\infty$ . Then we can write

$$R(z) = G(z) + H(z) \quad (*)$$

where  $G$  is a polynomial without constant term, and  $H$  is finite at  $\infty$ .

The degree of  $G$  is the order of the pole of  $R$  at  $\infty$ .  $G$  is called the **singular part** of  $R$  at  $\infty$ .

- Let the distinct finite poles of  $R$  be  $\beta_1, \dots, \beta_k$ . Let  $R_j(\psi) = R(\beta_j + \frac{1}{\psi})$ . Then  $R_j$  is a rational function with a pole at  $\infty$ . As in (\*), we can write

$$R_j = G_j + H_j$$

with  $H_j$  finite at  $\infty$ . Then

$$R(z) = G_j\left(\frac{1}{z - \beta_j}\right) + H\left(\frac{1}{z - \beta_j}\right)$$

with  $G_j$  is a polynomial in  $\frac{1}{z - \beta_j}$  without constant term called the **singular point** of  $R$  at  $\beta_j$ .

- Let  $F(z) = R(z) - G(z) - \sum_{j=1}^k G_j\left(\frac{1}{z - \beta_j}\right)$ .

Then  $F$  is a rational function which can only have poles among  $\beta_j, \infty$

Since by our construction,  $F$  is finite at every  $\beta_j, 1 \leq j \leq k$  and  $\infty$ .

So  $F$  is a constant.

In particular,  $R(z) = G(z) + \sum_{j=1}^k G_j\left(\frac{1}{z - \beta_j}\right) + c$ .

## 2.2 Power Series

### 2.2.1 Power series

**Theorem 2.9** (Abel's theorem). *If  $\sum a_n$  converges, then  $f(z) = \sum a_n z^n \rightarrow f(1)$  as  $z \rightarrow 1$  in such a way that  $\frac{|1-z|}{1-|z|}$  remains bounded.*

## 2.3 Exponential, Trigonometric and Logarithmic Functions

### 2.3.1 Exponential and Trigonometric function

The **exponential function** is defined as the solution if the differential equation

$$\begin{cases} f'(z) = f(z) \\ f(0) = 1 \end{cases}$$

We denote  $e^z = \exp z = \sum_{n=0}^{\infty} \frac{z^n}{n!}$ .

The **trigonometric function** are defined by

$$\cos z = \frac{e^{iz} + e^{-iz}}{2} \quad \sin z = \frac{e^{iz} - e^{-iz}}{2i}$$

### 2.3.2 Logarithmic Functions

The **logarithmic function**  $\ln$  is defined by  $z = \ln w$  is a root of the equation  $e^z = w$ .

For  $w \neq 0$ , we write  $z = x + iy$ , then

$$e^{x+iy} = w \Leftrightarrow \begin{cases} e^x = |w| \\ e^{iy} = \frac{w}{|w|} \end{cases}$$



The first equation has a unique solution  $x = \ln |w|$ .

The second equation  $e^{iy} = \frac{w}{|w|}$  has a unique solution  $y_0 \in [0, 2\pi)$ .

If we write  $w = re^{i\theta}$ , then  $x = \ln w, y = \theta = \arg w$ .

Thus, for  $w \neq 0$ , we have

$$\ln w = \ln |w| + i \arg w$$

The function  $\ln$  is actually not single-valued. But we can define a single-valued function  $Ln$

We define

$$a^b = \exp(b \ln a)$$

We will prove  $Ln$  is analytic in  $\mathbb{C} - (-\infty, 0]$  but not continuous in  $(-\infty, 0]$ .

$Ln$  is the principal branch of the logarithm.

## 3 Conformal Mappings

### 3.1 Basic topology

#### 3.1.1 Connectedness

**Theorem 3.1.** *A nonempty open set in  $\mathbb{C}$  is connected iff any two of its points can be joined by a polygon which lies in the set, i.e. Connectedness is equivalent to Path Connectedness*

An nonempty connected subset is called a **region**

### 3.1.2 Compactness

**Definition 3.2.** A set  $X$  is **totally bounded** if  $\forall \varepsilon > 0$ ,  $X$  can be covered by finitely many balls of radius  $\varepsilon$

**Theorem 3.3.** *A set is compact iff it is complete and totally bounded.*

**Theorem 3.4.** *A subset  $X \subset \mathbb{C}$  is compact iff every infinite sequence of  $X$  has a limit point in  $X$ .*

### 3.1.3 Continuous Functions

**Theorem 3.5.** *Continuous function maps connected space to connected space.*

**Theorem 3.6.** *Continuous function maps compact space to compact space.*

## 3.2 Conformality, geometric consequences of the existence of a derivative

### 3.2.1 Arcs and closed curves

The equation of an **arc**  $r$  in  $\mathbb{C}$  can be represented by one of the terms

- $x = x(t), y = y(t), \alpha \leq t \leq \beta, x, y$  are continuous at  $t$
- $z(t) = x(t) + iy(t), \alpha \leq t \leq \beta.$
- The continuous mapping  $\gamma : [\alpha, \beta] \rightarrow \mathbb{C}.$

For a non-decreasing function  $\varphi : [\alpha, \beta] \rightarrow [\alpha, \beta], z = z(\varphi(t)), \alpha' \leq \tau \leq \beta'$  is **change of parameter** of  $z(t)$ .

The change is **reversible** iff  $\varphi$  is strictly increasing.

If  $\gamma$  is differentiable, then call  $\gamma$  a **curve**.

$\gamma$  is **simple**, or a **Jordan curve**, if  $\gamma$  is injective.

$\gamma$  is **closed curve** if  $\gamma(0) = \gamma(1)$ .

### 3.2.2 Analytic Functions in Regions

A function  $f$  is analytic on an arbitrary set  $A$  if it is the restriction to  $A$  of a function which is analytic in some open set containing  $A$ .

**Theorem 3.7.** *An analytic function in a region (i.e. open and connected)  $\Omega$  whose derivative is 0 must reduce to a constant. The same hold if the real part, the imaginary part, the modulus, or the argument is constant.*

### 3.2.3 Conformal Mappings

Suppose  $f : \Omega \rightarrow \mathbb{C}$  is analytic in  $\Omega$ .  $r_1 = z_1(t), r_2 = z_2(t), \alpha \leq t \leq \beta$ .

$$z_0 = z_1(t_0) = z_2(t'_0), z'_1(t_0) \neq 0, z'_2(\hat{t}_0) \neq 0, \alpha < t_0, \hat{t}_0 < \beta.$$

$$f'(z_0) \neq 0, w_1(t) = f(z_1(t)), w_2 = f(z_2(\hat{t}_0))$$

$$\Gamma_1 = \{w_1(t) | \alpha \leq t \leq \beta\}, \Gamma_2 = \{w_2(t) | \alpha \leq t \leq \beta\}$$

Then

$$w'_1(t) = f'(z_1(t))z'_1(t)$$

$$w'_2(t) = f'(z_2(\hat{t}))z'_2(\hat{t})$$

$\Rightarrow$

$$w'_1(t_0) \neq 0, w'_2(t_0) \neq 0$$

$$\arg w'_1(t_0) = \arg f'(z_1(t_0))z'_1(t_0)$$

$$\arg w'_2(t_0) = \arg f'(z_2(\hat{t}_0))z'_2(\hat{t}_0)$$

So the "angle"  $\arg w'_1(t_0) - \arg w'_2(t_0) = \arg z'_1(t_0) - \arg z'_2(\hat{t}_0)$  remains the same.

Now we give the definition.

**Definition 3.8.**  $w = f(z)$  is said to be **conformal** in  $\Omega$  if  $f$  is analytic in  $\Omega$  and  $f'(z) \neq 0$  for  $\forall z \in \Omega$ .

Easy to prove that linear change of scale at  $z_0$  is independent of the direction.

$$i.e. |f'(z_0)| = \lim_{z \rightarrow z_0} \frac{\delta\sigma}{\delta s}$$

### 3.2.4 Length and Area

The **length** of a differentiable arc  $\gamma$  with the equation  $z(t) = x(t) + iy(t)$ ,  $a \leq t \leq b$

$$L(\gamma) = \int_a^b \sqrt{(x'(t))^2 + (y'(t))^2} dt = \int_a^b |z'(t)| dt$$

For  $\Gamma = f(\gamma)$  where  $f$  conformal mapping.

Then

$$L(\Gamma) = \int_a^b |f'(z(t))| \cdot |z'(t)| dt$$

The **area** of  $E \subset \mathbb{R}$  is  $A(E) = \iint_E dx dy$

Then by the differentiable functional transformation, the area  $\hat{E} = f(E)$  is

$$A(\hat{E}) = \iint_E |u_x v_y - u_y v_x| dx dy$$

If  $f$  is the conformal mapping of an open set containing  $E$ , then by Cauchy-Riemann equation

$$A(\hat{E}) = \iint_E |f'(z)|^2 dx dy$$

## 3.3 Möbius Transformation

Recall that a **Möbius transformation** is a function of the form

$$w = s(z) = \frac{az + b}{cz + d}, \quad ad - bc \neq 0$$

Then it has an inverse  $z = S^{-1}(w) = \frac{dw - b}{-cw + a}$ .

We may define  $S(\infty) = \lim_{z \rightarrow \infty} S(z) = \frac{a}{c}$ ,  $S(\frac{-d}{c}) = \infty$

With these definition,  $S : \hat{\mathbb{C}} \rightarrow \hat{\mathbb{C}}$  is a topological mapping. Here one may use the chordal metric to define the topology.

$$S'(z) = \frac{ad - bc}{(cz + d)^2}$$

Then  $S$  is conformal in  $\hat{\mathbb{C}} - \{-\frac{d}{c}, \infty\}$ .

$w = z + \alpha$  is called a **parallel translation**.

$w = kz$  with  $|k| = 1$  is a **rotation**.

$w = kz$  with  $k > 0$  is a **homothetic transformation**.

$x = \frac{1}{z}$  is called an **inversion**.

**Proposition 3.9.** *Every Möbius transformation is a composition of the above four operations.*

### 3.3.1 Cross ratio

For three distinct points  $z_2, z_3, z_4 \in \hat{\mathbb{C}}$ , we can find a Möbius transformation  $S$  such that  $S(z_2) = 0, S(z_3) = 1, S(z_4) = \infty$ .

**Lemma 3.10.** *The Möbius transformation satisfying the above conditions is unique.*

The **cross ratio**  $(z_1, z_2, z_3, z_4)$  is the image  $z_1$  under the Möbius transformation which maps  $z_2$  to 1,  $z_3$  to 0 and  $z_4$  to  $\infty$ .

$$(z_1, z_2; z_3, z_4) = \frac{z_1 - z_3}{z_1 - z_4} \cdot \frac{z_2 - z_4}{z_2 - z_3} \quad (3.1)$$

**Theorem 3.11.** *If  $z_1, z_2, z_3, z_4 \in \hat{\mathbb{C}}$  are distinct, and  $T$  is any Möbius transformation, then  $(Tz_1, Tz_2, Tz_3, Tz_4) = (z_1, z_2, z_3, z_4)$ .*

**Lemma 3.12.** *Let  $T$  be a Möbius transformation,  $T(\mathbb{R})$  is either a circle or a straight line.*

**Theorem 3.13.** *The cross ratio  $(z_1, z_2, z_3, z_4)$  is real iff the four points lie on a circle or a straight line.*

**Remark 3.14.** One may prove the theorem by elementary geometry

**Theorem 3.15.** *A Möbius transformation maps circles into circles.*

### 3.3.2 Symmetry

Suppose  $T$  is a Möbius transformation which maps  $\hat{\mathbb{R}}$  onto a circle  $C$ .

We say that  $w = Tz$  and  $w^* = T\bar{z}$  are **symmetric** w.r.t.  $C$ .

**Remark 3.16.** This definition is independent of  $T$ . Suppose  $S$  is another Möbius transformation which maps  $\hat{\mathbb{R}}$  onto  $C$ , then  $S^{-1}T$  maps  $\hat{\mathbb{R}}$  to  $\hat{\mathbb{R}}$ , and this  $S^{-1}w = S^{-1}Tz$  and  $S^{-1}w^* = S^{-1}T\bar{z}$  are conjugate.

The points  $z$  and  $z^*$  are **symmetric w.r.t  $C$  through  $z_1, z_2, z_3$**  iff  $(z^*, z_1, z_2, z_3) = \overline{(z, z_1, z_2, z_3)}$ .

This can be another definition.

Note that only the points on  $C$  are symmetric to themselves.

The mapping  $z \mapsto z^*$  is 1-1 and is called **reflection** w.r.t.  $C$ .

### Geometric Meaning of Symmetry

Case1:  $C$  is a straight line. We may assume  $z_3 = \infty$ .

$z, z^*$  are symmetric w.r.t.  $C$  if and only if

$$\frac{z^* - z_2}{z_1 - z_2} = \frac{\bar{z} - \bar{z}_2}{\bar{z}_1 - \bar{z}_2}$$

Then

$$|z^* - z_2| = |z - z_2|, \quad \forall z_2 \in C \text{ and } z_2 \neq \infty$$

$$\operatorname{Im} \frac{z^* - z_2}{z_1 - z_2} = \operatorname{Im} \frac{\bar{z} - \bar{z}_2}{\bar{z}_1 - \bar{z}_2}$$

So  $C$  is the bisecting normal of the segment between  $z$  and  $z^*$ .

Case2:  $C$  is the circle  $|z - a| = R$ .

$$\begin{aligned} \text{Then for } \forall \text{ distinct } z_1, z_2, z_3 \in \mathbb{C}, \overline{(z, z_1, z_2, z_3)} &= \overline{(z - a, z_1 - a, z_2 - a, z_3 - a)} \\ &= (\bar{z} - \bar{a}, \bar{z}_1 - \bar{a}, \bar{z}_2 - \bar{a}, \bar{z}_3 - \bar{a}) = (\bar{z} - \bar{a}, \frac{R^2}{z_1 - a}, \frac{R^2}{z_2 - a}, \frac{R^2}{z_3 - a}) = (\frac{R^2}{\bar{z} - \bar{a}}, z_1 - a, z_2 - a, z_3 - a) \\ &= (\frac{R^2}{\bar{z} - \bar{a}}, z_1, z_2, z_3). \end{aligned}$$

Then the symmetric point of  $z$  w.r.t.  $C$  is

$$z^* = \frac{R^2}{\bar{z} - \bar{a}} + a$$

or

$$(z^* - a)(\bar{z} - \bar{a}) = R^2$$

$\Rightarrow$

$$\begin{cases} |z^* - a| \cdot |z - a| = R^2 \\ \frac{z^* - a}{z - a} = \frac{(z^* - a)(\bar{z} - \bar{a})}{|z - a|^2} > 0 \end{cases}$$

**Theorem 3.17** (The Symmetric principle). *If a Möbius transformation maps a circle  $C_1$  onto a circle  $C_2$ , then it transforms any pair of symmetric points w.r.t.  $C_1$  into a pair of symmetric points w.r.t.  $C_2$ .*

*Proof.* Case1:  $C_1 = \hat{\mathbb{R}}$ . Let  $T$  be the Möbius transformation which maps  $\hat{\mathbb{R}}$  onto  $C_2$ .

$\forall z \in \mathbb{C}$ , by definition,  $w = Tz$  and  $w^* = T\bar{z}$  are symmetric w.r.t.  $C_2$ .

Case2:  $C_1$  is a general circle. Let  $T : C_1 \rightarrow C_2$  and  $S : \mathbb{R} \rightarrow C_2$  be Möbius transformation.

Suppose  $w, w^*$  are symmetric w.r.t.  $C_1$ . Then there exists  $z$  s.t.  $w = Sz, w^* =$

$S\bar{z}$ .

Then we can find  $Tw = TSz, Tw^* = TS\bar{z}$  are symmetric w.r.t.  $C_2$  since  $TS : \hat{\mathbb{R}} \rightarrow C_2$  □

**Remark 3.18.** (1). The Möbius transformation from  $C_1$  to  $C_2$  satisfies  $z_1 \mapsto w, z_2 \mapsto w_2, z_3 \mapsto w_3$  where  $z_1, z_2, z_3 \in C_1, w_1, w_2, w_3 \in C_2$  is given by

$$(w, w_1, w_2, w_3) = (z, z_1, z_2, z_3)$$

(2). The Möbius transformation from  $C_1$  to  $C_2$  satisfies  $z_1 \mapsto w_1, z_2 \mapsto w_2$  where  $z_1 \in C_1, z_2 \notin C_1, w_1 \in C_2, w_2 \notin C_2$  is given by

$$(w, w_1, w_2, w_2^*) = (z, z_1, z_2, z_2^*)$$

### 3.3.3 Steiner Circles, circular net

For  $S(z) = \frac{az + b}{cz + d}, S'(z) = \frac{ad - bc}{(cz + d)^2}$ .

A point  $z \notin$  a circle  $C$  is said to on the **right(left, resp.)** of  $C$  if  $\text{Im}(z, z_1, z_2, z_3) > 0(\text{Im}(z, z_1, z_2, z_3) < 0)$

**Remark 3.19.**

- (1). This agrees with everyday use since  $(i, 1, 0, \infty) = i$
- (2). This distinct between left and right is the same for all triples, while the meaning may be reversed.

(If  $C = \hat{\mathbb{R}}$ , then  $(z, z_1, z_2, z_3) = \frac{az + b}{cz + d}$  with  $a, b, c, d \in \mathbb{R} \Rightarrow \text{Im}(z, z_1, z_2, z_3) = \frac{ad - bc}{|cz + d|^2} \text{Im}(z)$ )

- (3). We can define an absolute positive orientation of all finite circles by requiring that  $\infty$  should be lie to the right of the oriented circles.



Consider a Möbius transformation of the form

$$w = k \cdot \frac{z - a}{z - b}$$

Here,  $z = a \mapsto w = 0, z = b \mapsto w = \infty$ .

Then circles through  $a, b$  maps to straight line through  $0, \infty$ .

The concentric circle about the origin,  $|w| = \rho$ , correspond to circles with the equation

$$\left| \frac{z - a}{z - b} \right| = \frac{\rho}{|k|}$$

These are the circles of **Apollonius** with limit points  $a$  and  $b$ .

Denote by  $C_1$  the circles through  $a, b$  and  $C_2$  the circles of Apollonius with these limit points. The configuration formed by all the circles  $C_1$  and  $C_2$  is called the **Steiner circles**(or **circular net**)

**Theorem 3.20.**

- (a) *There is exactly one  $C_1$  and one  $C_2$  through each point in  $\hat{\mathbb{C}} \setminus \{a, b\}$*
- (b) *Every  $C_1$  meets every  $C_2$  under right angle.*
- (c) *Reflection in a  $C_1$  transforms every  $C_2$  into itself and every  $C_1$  into another  $C_1$ .*
- (d) *The limit points  $a, b$  are symmetric w.r.t. each  $C_2$ , but not w.r.t. other circles.*

*Proof.* If the limit points are  $0, \infty$ , those properties are trivial in the  $w$ -plane. The general case follows since all properties are invariant under Möbius transformations. □

### 3.4 Elementary Conformal mapping

**Example 3.21.**  $w = z^\alpha$  where  $\alpha > 0$ .

Let  $S(u_1, u_2)$  with  $0 < \varphi_2 - \varphi_1 \leq 2\pi$  be  $\{z \in \mathbb{C} : z \neq 0, \varphi_1 < \arg(z) < \varphi_2\}$  where  $\arg(z)$  can be chosen as any value of it.

Then  $S(\varphi_1, \varphi_2)$  is a region.

In this region, a unique value of  $w = z^\alpha$  is defined by  $\arg w = \alpha \arg z$ .

This function is analytic with  $\frac{dw}{dz} = \alpha \frac{w}{z}$ .

This function is 1-1 only if  $\alpha(\varphi_2 - \varphi_1) \leq 2\pi$ .

**Example 3.22.**  $w = e^z$  maps  $\{z \in \mathbb{C} : -\frac{\pi}{2} < \text{Im}(z) < \frac{\pi}{2}\}$  onto  $\{w \in \mathbb{C} : \text{Re}(w) > 0\}$

**Example 3.23.**  $w = \frac{z-1}{z+1}$  maps  $\{z \in \mathbb{C} : \text{Re}(z) > 0\}$  onto  $\{w \in \mathbb{C} : |w| < 1\}$

**Example 3.24.**

$$\mathbb{C} \setminus [-1, 1] \xrightarrow{z_1 = \frac{z+1}{z-1}} \mathbb{C} \setminus (-\infty, 0] \xrightarrow{z_2 = \sqrt{z_1}} \{\text{Re}(z_2) > 0\} \xrightarrow{w = \frac{z_2-1}{z_2+1}} \{w \in \mathbb{C} : |w| < 1\} \quad (3.2)$$

### 3.4.1 Elementary Riemann surfaces

**Example 3.25.**  $w = z^n, n \in \mathbb{Z}_+$  and  $n > 1$ .

There is a 1-1 correspondence between each angle  $\frac{(k-1)2\pi}{n} < \arg z < \frac{k \cdot 2\pi}{n}, k = 1, 2, \dots, n$  and while  $w$ -plane except for the positive real axis.

**Example 3.26.**  $w = e^z$ . This function maps each parallel strip  $(k-1)2\pi < \text{Im } z < k \cdot 2\pi, k \in \mathbb{Z}$  onto a sheet with a cut along the positive axis.

## 4 Complex Integration

### 4.1 Fundamental Theorems

#### 4.1.1 Line integral and rectifiable arcs

Let  $f(t) = u(t) + iv(t)$  be a complex-valued defined on  $t \in [a, b] \subset \mathbb{R}$  where  $u, v$  are real-valued functions. If  $f$  is continuous on  $[a, b]$ , we may define the **integral**

$$\int_a^b f(t)dt := \int_a^b u(t)dt + i \int_a^b v(t)dt$$

Let  $\gamma$  be a piecewise differential arc in  $\mathbb{C}$  with the equation  $z = z(t), a \leq t \leq b$ . If  $f$  is continuous on  $\gamma$ , then  $f(z(t))$  is continuous on  $[a, b]$ , and we define

$$\int_{\gamma} f(z)dz = \int_a^b f(z(t))z'(t)dt \quad (4.1)$$

The integral defined in 4.1 is independent of the parametrization of  $\gamma$ . Suppose that another parametrization of  $\gamma$  is  $\gamma : (\alpha, \beta) \rightarrow \mathbb{C}, \tau \mapsto z(t(\tau))$ , where  $t : (\alpha, \beta) \rightarrow (a, b), \tau \mapsto t(\tau)$  is piecewise differentiable. Then we have

$$\int_a^b f(z(t))z'(t)dt = \int_{\alpha}^{\beta} f(z(t(\tau)))z'(t(\tau))t'(\tau)d\tau = \int_{\alpha}^{\beta} f(z(t(\tau)))\frac{dz(t(\tau))}{d\tau}d\tau \quad (4.2)$$

For an arc  $\gamma$  with equation  $z = z(t), a \leq t \leq b$ , we define  $-\gamma$  by  $z = z(-t), -b \leq t \leq a$ .

Then we have

$$\int_{-\gamma} f(z)dz = \int_{-b}^{-a} f(z(-t))\frac{dz(-t)}{dt}dt$$

$$\begin{aligned}
&= - \int_{-a}^{-b} f(z(-t))z'(-t)dt \\
&= - \int_a^b f(z(\tau))z'(\tau)d\tau \\
&= - \int_{\gamma} f(z)dz
\end{aligned}$$

So we have those properties:

**Proposition 4.1.**

(a)  $\int_{-\gamma} f(z)dz = - \int_{\gamma} f(z)dz$

(b) Let  $f$  and  $g$  be two continuous functions on the piecewise differentiable arc  $\gamma$ , then

$$\int_{\gamma} (\lambda_1 f + \lambda_2 g)dz = \lambda_1 \int_{\gamma} f dz + \lambda_2 \int_{\gamma} g dz, \forall \lambda_1, \lambda_2 \in \mathbb{C}$$

(c) If  $\gamma$  can be subdivided into two pieces differentiable arcs  $\gamma_1$  and  $\gamma_2$ , and  $f$  is continuous on  $\gamma_1$ , then

$$\int_{\gamma} f dz = \int_{\gamma_1} f dz + \int_{\gamma_2} f dz$$

(d) (c) implies that the integral of a closed curve doesn't depend on the starting point on the curve

**Example 4.2.** Evaluate  $\int_{\gamma} \frac{1}{z-a} dz$  where  $\gamma$  is the circle centered at  $a \in \mathbb{C}$  with radius  $R$ .

Let  $z = z(t) = a + Re^{it}$ . Then the integral is  $2\pi i$

### 4.1.2 The fundamental theorem of Calculus for integrals in $\mathbb{C}$

The line integral w.r.t.  $\bar{z}$  is defined by

$$\int_{\gamma} f(z) d\bar{z} = \int_{\gamma} \overline{f(\bar{z})} dz$$

With this notation, line integrals w.r.t.  $x = \operatorname{Re}(z)$  and  $y = \operatorname{Im}(z)$  can be defined by

$$\int_{\gamma} f(z) dx = \frac{1}{2} \left[ \int_{\gamma} f(z) dz + \int_{\gamma} f(z) \overline{dz} \right]$$

$$\int_{\gamma} f(z) dy = \frac{1}{2i} \left[ \int_{\gamma} f(z) dz - \int_{\gamma} f(z) \overline{dz} \right]$$

if we write  $f(z) = \mu + i\nu$ , we have

$$\int_{\gamma} f(z) dz = \int_{\gamma} f(z) dx + i \int_{\gamma} f(z) dy = \int_{\gamma} (\mu dx - \nu dy) + i \int_{\gamma} (\nu dx + \mu dy)$$

**Remark 4.3.** It is followed by the intuition. We can view the integration as the multiplication between  $f$  and  $dz$ .

The integral w.r.t. **arc length** is defined by

$$\int_{\gamma} f(z) |dz| = \int_a^b f(z(t)) |z'(t)| dt$$

This integral is again independent of the parametrization. It is easy to check

$$\int_{-\gamma} f(z) |dz| = \int_{\gamma} f(z) |dz|$$

Now we define **length** of a curve  $\gamma$ :  $L(\gamma) = \int_{\gamma} |dz|$

We have the inequality:

$$\left| \int_{\gamma} f dz \right| \leq \int_{\gamma} |f| \cdot |dz| \leq L(\gamma) \cdot \sup_{z \in \gamma} |f(z)|$$

The length of an arc  $\gamma$  ( $z = z(t)$ ) can also be defined as the least upper bound of

all sums

$$\sum_{i=1}^n |z(t_i) - z(t_{i-1})|$$

where  $a = t_0 < t_1 < \dots < t_n = b$ . If this least upper bound is finite, we say that the arc is **rectifiable**.

It is easy to show that piecewise differentiable arcs are rectifiable.

The integral of a continuous function  $f$  on a rectifiable arc may be defined as

$$\int_{\gamma} f(z) dz = \lim \sum_{k=1}^n f(z(\psi_k)) [z(t_k) - z(t_{k-1})]$$

**Theorem 4.4.** *Let  $\Omega \subset \mathbb{C}$  be a region, and  $P, Q$  two (possibly complex-valued) functions that are continuous on  $\Omega$ ,  $\gamma$  closed curve. The integral  $\int_{\gamma} P(x, y) dx + Q(x, y) dy$  depends only on the end point of  $\gamma$  iff there exists a function  $U(x, y)$  on  $\Omega$  with  $\frac{\partial U}{\partial x} = P, \frac{\partial U}{\partial y} = Q$ .*

*Proof.* " $\Leftarrow$ ": If such a  $U$  exists, then

$$\int_{\gamma} P dx + Q dy = \int_{\gamma} \frac{\partial U}{\partial x} dx + \frac{\partial U}{\partial y} dy = \int_{\gamma} \frac{dU}{dt} dt = U(\gamma(b)) - U(\gamma(a))$$

" $\Rightarrow$ ": Fix a point  $(x_0, y_0) \in \Omega$ . We define  $U(x, y) = \int_{\gamma} P dx + Q dy$  where  $\gamma$  is any curve between  $(x_0, y_0)$  and  $(x, y)$ . Easy to check that it is true.  $\square$

**Theorem 4.5** (Fundamental theorem of Calculus for integrals on  $\mathbb{C}$ ). *Let  $f$  be continuous on a region  $\Omega$  containing  $\gamma$ .  $\int_{\gamma} f dz$  depends on the endpoints iff  $f$  is the derivative of an analytic function  $F$  in  $\Omega$ .*

**Remark 4.6.** We will prove  $\int_{\gamma} f dz = F(\omega_2) - F(\omega_1)$  where  $\gamma$  begins at  $\omega_1$  and ends at  $\omega_2$ .

*Proof.* Transform the line integration into the composition of two real integration.  $\square$

**Corollary 4.7.** *If  $F$  is analytic on  $\Omega$  with  $F' = f$ , and  $\gamma$  is a closed curve in  $\Omega$ , then  $\int_{\gamma} f dz = 0$ . Conversely if  $f$  is continuous on  $\Omega$  and  $\int_{\gamma} f dz = 0$  for any closed curve in  $\Omega$ , then  $f$  is the derivative of an analytic function  $F$  in  $\Omega$ .*

### 4.1.3 Cauchy's theorem for a rectangle

There are some notes in this section:

$R$  is the rectangle in  $\mathbb{C}$ ,  $R = \{x + iy \in \mathbb{C} : a \leq x \leq b, c \leq y \leq d\}$ . And  $\partial R$  is boundary curve oriented in the counterclockwise direction.

**Theorem 4.8** (Cauchy's theorem for a rectangle). *If  $f$  is analytic on an open set which contains  $R$ , then  $\int_{\partial R} f(z) dz = 0$*

*Proof.* For  $\forall$  rectangle  $\tilde{R}$  inside  $R$ , we define  $Z(\tilde{R}) = \int_{\partial \tilde{R}} f(z) dz$ . Then  $Z(R) = Z(R_1) + Z(R_2)$  if  $R$  is divided into  $Z_1, Z_2$ .

Since we can divide  $R$  into four equal rectangles, and find a rectangle with  $|Z(R^{(1)})| \geq \frac{1}{4}|Z(R)|$ . Then repeat the above steps and we obtain a sequence of nested rectangles  $R \supset R^{(1)} \supset \dots$  with the property

$$|Z(R^{(n)})| \geq \frac{1}{4}|Z(R^{(n-1)})| \geq \dots \geq \frac{1}{4^n}|Z(R)| \quad (4.3)$$

$\forall \delta > 0, \exists n \in \mathbb{N}$  s.t.  $R^{(n)} \subset \{z \in \mathbb{C} : |z - z_0| < \delta\}$ ,  $\forall n \geq N$ , where  $z_0$  is the limit of  $R^{(n)}$  as  $n \rightarrow \infty$ .

$f$  is analytic in  $R \Rightarrow \forall \varepsilon, \exists \delta > 0$  s.t.

$$\left| \frac{f(z) - f(z_0)}{z - z_0} - f'(z_0) \right| < \varepsilon, \forall z \text{ with } |z - z_0| < \delta \quad (4.4)$$

We assume that  $\delta$  satisfies both conditions. We have

$$Z(R^{(n)}) = \int_{\partial R^{(n)}} f(z) dz = \int_{\partial R^{(n)}} [f(z) - f(z_0) - (z - z_0)f'(z_0)] dz$$

$$\Rightarrow |Z(R^{(n)})| \leq \varepsilon \int_{\partial R^{(n)}} |z - z_0| dz \text{ by 4.4}$$

Let  $d_n$  be the length of diagonal of  $R^{(n)}$ ,  $L_n$  be the length of its perimeter. Then

$$|z - z_0| \leq d_n, \forall z \in \partial R^{(n)}.$$

$$\Rightarrow |Z(R^{(n)})| \leq \varepsilon d_n L_n = \varepsilon \frac{D}{2^n} \cdot \frac{L}{2^n} \text{ where } D, L \text{ are the diameter and perimeter of } R.$$

$$\Rightarrow |Z(R)| \stackrel{4.3}{\leq} 4^n |Z(R^{(n)})| \leq \varepsilon DL \Rightarrow Z(R) = 0 \text{ since } \varepsilon \text{ is arbitrary.} \quad \square$$

We will next prove the following stronger theorem:

**Theorem 4.9** (stronger version of Cauchy's theorem for a rectangle). *Let  $f$  be analytic on  $R' = R \setminus \{\psi_1, \dots, \psi_m\}$ ,  $m \in \mathbb{N}$ . If  $\lim_{z \rightarrow \psi_j} (z - \psi_j)f(z) = 0, \forall 1 \leq j \leq m$ , then*

$$\int_{\partial R} f(z) dz = 0.$$

*Proof.* WLOG, we may assume  $f$  is not analytic at only one point  $\psi \in R$ . If we put  $\psi$  into a small rectangle  $S_0$ , then the previous theorem tells us  $\int_{\partial R} f(z) dz = \int_{\partial S_0} f(z) dz$ .

$$\forall \varepsilon > 0, \text{ we may choose } S_0 \text{ small enough such that } |f(z)| \leq \frac{\varepsilon}{|z - \psi|}, \forall z \in \partial S_0$$

$$\Rightarrow \left| \int_{\partial R} f(z) dz \right| \leq \varepsilon \int_{\partial S_0} \frac{|dz|}{|z - \psi|} \leq \varepsilon \frac{1}{\frac{l}{2}} \cdot 4l = 8\varepsilon$$

$$\Rightarrow \int_{\partial R} f(z) dz = 0 \text{ since } \varepsilon \text{ is arbitrary.} \quad \square$$

#### 4.1.4 Cauchy's Theorem for a disk

$$\Delta := \{z \in \mathbb{C} : |z - z_0| < R\} \text{ where } R > 0.$$

**Theorem 4.10** (Cauchy's Theorem for a disk). *If  $f$  is analytic in an open disk  $\Delta$ , then  $\int_{\gamma} f(z) dz = 0$  for closed curve  $\gamma$  in  $\Delta$ .*

*Proof.* Suppose the center of  $\Delta$  is  $z_0 = x_0 + iy_0$ ,  $z = x + iy$ . We define

$$F(z) = \int_{\gamma} f(z) dz$$



where  $\gamma$  is the horizontal line segment from  $z_0$  to  $(x, y_0)$  added with vertical line segment from  $(x, y_0)$  to  $z$ . We have

$$\frac{\partial F}{\partial y} = \lim_{\delta y \rightarrow 0} \frac{F(x, y + \delta y) - F(x, y)}{\delta y} = \lim_{\delta y \rightarrow 0} \frac{1}{\delta y} \int_{\delta \gamma} f(z) dz = if(z) \quad (4.5)$$

By Cauchy' theorem on rectangles, one has  $F(z) = -\int_{\tilde{\gamma}} f(z) dz$ , where  $\tilde{\gamma}$  is the vertical line segment from  $z_0$  to  $(x_0, y)$  added with horizontal line segment from  $(x_0, y)$  to  $z$ .

Similarly,  $\frac{\partial F}{\partial x} = f(z)$ .

$\Rightarrow \frac{\partial F}{\partial x} = -i \frac{\partial F}{\partial y} \Rightarrow F$  is analytic in  $\Delta$  with derivative  $f$ . By Fundamental Theorem 4.5 of Calulus  $\Rightarrow \int_{\gamma} f(z) dz = 0$  for  $\forall$  closed curve in  $\Delta$ .  $\square$

Here is a stronger version.

**Theorem 4.11** (stronger version of Cauchy's Theorem for a disk). *Let  $f$  be analytic in a region  $\Delta' = \Delta \setminus \{\psi_1, \dots, \psi_m\}$  with  $m \in \mathbb{N}$ . If  $f$  satisfies  $\lim_{z \rightarrow \psi_j} (z - \psi_j) f(z) = 0, \forall 1 \leq j \leq m$ , then  $\int_{\gamma} f(z) dz = 0, \forall \gamma$  closed in  $\Delta'$*

*Proof.* It is similar to the above proof.

For the case no  $\psi_j$  lies on  $x = x_0$  and  $y = y_0$ , we can find a similar curve  $\gamma$  with last segment is a vertical one. Let  $F(z) = \int_{\gamma} f(z) dz$ . And continue the process of proof of the previous theorem.

For the case that  $\exists \psi_j$  lies on the lines  $x = x_0, y = y_0$ , we actually can move the center to another point s.t. no  $\psi_j$  lies on the lines  $x = x'_0, y = y'_0$ .  $\square$

## 4.2 Cauchy's integral formula

### 4.2.1 Index of a point with respect to a closed curve

**Lemma 4.12.** *If the piecewise differentiable closed curve  $\gamma$  does not pass through  $z \in \mathbb{C}$ , then the value of the integral  $\int_{\gamma} \frac{d\zeta}{\zeta - z}$  is a multiple of  $2\pi i$ .*

*Proof.*  $\gamma : \zeta = \zeta(t), \alpha \leq t \leq \beta$ .  $h(t) = \int_{\alpha}^t \frac{\zeta'(s)}{\zeta(s) - z} ds$ .

$z \in \gamma \Rightarrow h$  is defined and continuous on  $[\alpha, \beta]$ . For all  $t$  s.t.  $\zeta'(t)$  is continuous, we have

$$h'(t) = \frac{\zeta'(t)}{\zeta(t) - z} \Rightarrow \frac{d}{dt} [e^{-h(t)}(\zeta(t) - z)] = 0$$

So  $e^{-h(t)}(\zeta(t) - z)$  is constant on  $[\alpha, \beta]$ .

Then  $e^{h(t)} = \frac{\zeta(t) - z}{\zeta(\alpha) - z} \Rightarrow e^{h(\beta)} = 1 \Rightarrow h(\beta) \in \{2k\pi i : k \in \mathbb{Z}\}$ . □

The **index of the point**  $z$  w.r.t. the closed curve  $\gamma$  is the number

$$n(\gamma, z) = \frac{1}{2\pi i} \int_{\gamma} \frac{d\zeta}{\zeta - z}$$

$n$  is also called the **winding number**.

**Theorem 4.13.** *Let  $\gamma$  be a piecewise differentiable closed curve. The function  $z \mapsto n(\gamma, z)$  is constant on each connected set of  $\mathbb{C} \setminus \gamma$ , and zero if this set is unbounded.*

*Proof.* Define  $f : \mathbb{C} \setminus \gamma \rightarrow \mathbb{C}, z \mapsto n(\gamma, z) = \frac{1}{2\pi i} \int_{\gamma} \frac{d\zeta}{\zeta - z}$ .

Then

$$|f(z) - f(z_0)| = \frac{1}{2\pi} \left| \int_{\gamma} \frac{z - z_0}{(\zeta - z)(\zeta - z_0)} d\zeta \right| \leq \frac{|z - z_0|}{2\pi} \int_{\gamma} \frac{1}{|\zeta - z| \cdot |\zeta - z_0|} |d\zeta|$$

$\Rightarrow f$  is continuous on each open connected set of  $\mathbb{C} \setminus \gamma$ . Let  $\Omega$  be any open connected set of  $\mathbb{C} \setminus \gamma$ . We have  $f(\Omega)$  is connected  $\xrightarrow{f(\Omega) \subset \mathbb{Z}} f(\Omega)$  contains at most one point  $\Rightarrow f$  is constant on  $\Omega$ .

If  $|z|$  is sufficient large,  $\exists$  a disk of radius  $R$ ,  $B(0, R)$ , s.t.  $\gamma \subset B(0, R)$  but  $z \notin B(0, R)$ . Cauchy's theorem for a disk 4.10 tells us that  $f(z) = n(\gamma, z) = 0$ . So it is zero if this set is unbounded.  $\square$

**Lemma 4.14.** *Let  $z_1, z_2$  be two points on a closed curve  $\gamma$  and  $0 \notin \gamma$ .*

*Suppose  $z_1$  in the lower half space and  $z_2$  in upper half space. If  $\gamma_1 \cap \{(x, 0) : x \leq 0\} = \emptyset$ , and  $\gamma_2 \cap \{(x, 0) : x \geq 0\} = \emptyset$ , then  $n(\gamma, 0) = 1$ .*

**Remark 4.15.** One method to prove this lemma is to create two segment from  $z_i$  to the point in the unit circle. By divide the curve into two parts, we can easily remove the part of previous curve by using the theorem 4.13, since 0 is in the unbounded set.

In this proof, we can find that Theorem 4.13 is such powerful that we can change any curve to a more simple curve easily!

## 4.2.2 Cauchy's integral formula

**Theorem 4.16** (Cauchy's integral formula). *Suppose that  $f$  is analytic in an open disk  $\Delta$ , and let  $\gamma$  be a closed curve in  $\Delta$ . For  $\forall z \notin \gamma$ ,*

$$n(\gamma, z)f(z) = \frac{1}{2\pi i} \int_{\gamma} \frac{f(\zeta)}{\zeta - z} d\zeta$$

where  $n(\gamma, z)$  is the index of  $z$  w.r.t.  $\gamma$ .

*Proof.* If  $z \notin \Delta$ , The both sides of the equation is 0.

So we may assume  $z \in \Delta$  and  $z \notin \gamma$ . Define  $F : \Delta \setminus \{z\} \rightarrow \mathbb{C}, \zeta \mapsto \frac{f(\zeta) - f(z)}{\zeta - z}$ .

Then  $F$  is analytic in  $\Delta \setminus \{z\}$ , and  $\lim_{\zeta \rightarrow z} (\zeta - z)F(\zeta)$ .

By Cauchy's Theorem 4.9  $\Rightarrow \int_{\gamma} F(\zeta) d\zeta = 0 \Rightarrow \int_{\gamma} \frac{f(\zeta)}{\zeta - z} d\zeta = f(z) \int_{\gamma} \frac{1}{\zeta - z} d\zeta = f(z) \cdot 2\pi i \cdot n(\gamma, z)$   $\square$

**Remark 4.17.** This proof let us find that for a good-enough function, its integral over a closed curve is a constant.

The theorem still holds if  $f$  is analytic except at a finite number of  $\zeta_j$  s.t.

$$\lim_{\zeta \rightarrow \zeta_j} (\zeta - \zeta_j) f(\zeta) = 0$$

and  $z \neq \zeta_j$  for each  $j$ , since Cauchy's theorem is still applicable.

**Theorem 4.18** (The mean value property for analytic functions).  *$f$  is analytic in a region  $\Omega$  which contain  $\overline{B(z, R)}$ . Then*

$$f(z) = \frac{1}{2\pi} \int_0^{2\pi} f(z + Re^{i\theta}) dt$$

*Proof.* The previous theorem 4.16  $\Rightarrow$

$$f(z) = \frac{1}{2\pi i} \int_{|\zeta-z|=R} \frac{f(\zeta)}{\zeta - z} d\zeta \stackrel{\zeta=z+Re^{it}}{=} \frac{1}{2\pi} \int_0^{2\pi} f(z + Re^{it}) dt$$

□

If  $f$  is analytic in an open disk  $\Delta$ , and  $\gamma$  is a closed curve in  $\Delta$ . And  $n(\gamma, z) = 1$ . Then

$$f(z) = \frac{1}{2\pi i} \int_{\gamma} \frac{f(\zeta)}{\zeta - z} d\zeta$$

This is usually referred to as **Cauchy's integral formula**

### 4.2.3 Higher derivatives

**Lemma 4.19.** *Let  $\Omega \subset \mathbb{C}$  be a region and  $\gamma$  be an arc in  $\Omega$ . If  $\varphi$  is continuous on  $\gamma$ , then the function*

$$F_n(z) := \int_{\gamma} \frac{\varphi(\zeta)}{(\zeta - z)^n} d\zeta$$

*is analytic in each of the regions  $\Omega \setminus \gamma$ , and its derivative is  $F'_n(z) = nF_{n+1}(z)$*

*Proof.* We prove it by induction.

The lemma is true if  $n = 0$ :  $F_0(z) = \int_{\gamma} \varphi(\zeta) d\zeta$  and  $F'_0(z) = 0 = 0 \cdot F_1(z)$ .

We suppose that the lemma holds for  $n - 1$  with  $n \in \mathbb{N}$ :  $\forall$  continuous  $\varphi$  on  $\gamma$ ,  $F_{n-1}$  is analytic in  $\Omega \setminus \gamma$  and  $F'_{n-1}(z) = (n - 1)F_n(z)$ ,  $\forall z \in \Omega \setminus \gamma$ .

Fix  $z_0 \in \Omega \setminus \gamma$ . For  $\forall z \in B(z_0, \frac{\delta}{2})$ , with  $B(z_0, \delta) \subset \Omega \setminus \gamma$ , we have  $|\zeta - z| > \frac{\delta}{2}$ ,  $\forall \zeta \in \gamma$ .

For  $\forall$  continuous  $\varphi$  on  $\gamma$ ,

$$\begin{aligned} F_n(z) - F_n(z_0) &= \int_{\gamma} \frac{\varphi(\zeta)(\zeta - z + z - z_0)}{(\zeta - z)^n(\zeta - z_0)} d\zeta - \int_{\gamma} \frac{\varphi(\zeta)}{(\zeta - z_0)^n} d\zeta \\ &= \left[ \int_{\gamma} \frac{\varphi(\zeta)}{(\zeta - z)^{n-1}(\zeta - z_0)} d\zeta - \int_{\gamma} \frac{\varphi(\zeta)}{(\zeta - z_0)^{n-1}(\zeta - z)} d\zeta \right] \\ &\quad + (z - z_0) \int_{\gamma} \frac{\varphi(\zeta) d\zeta}{(\zeta - z)^n(\zeta - z_0)} \end{aligned}$$

Let  $\psi(\zeta) = \frac{\varphi(\zeta)}{\zeta - z_0}$ , which is continuous except  $\gamma$ .

Using the induction condition to  $\psi$ , we can finish the proof. □

**Theorem 4.20.** *An analytic function on a region  $\Omega$  has derivatives of all orders which are analytic in  $\Omega$ . More precisely,  $\forall z_0 \in \Omega$ , choose  $B(z, \delta) \subset \Omega$  and a circle  $C \subset B(z_0, \delta)$  with center  $z_0$ . For  $\forall z$  in the interior of  $C$ , Cauchy's integral formula gives*

$$f(z) = \frac{1}{2\pi i} \int_C \frac{f(\zeta)}{\zeta - z} d\zeta$$

Then the previous lemma implies  $f'(z) = \frac{1}{2\pi i} \int_C \frac{f(\zeta)}{(\zeta - z)^2} d\zeta$  is analytic in the interior of  $C$ . More generally, for  $\forall n \in \mathbb{N}$ ,

$$f^{(n)}(z) = \frac{n!}{2\pi i} \int_C \frac{f(\zeta)}{(\zeta - z)^{n+1}} d\zeta \quad (4.6)$$

#### 4.2.4 Consequences of Cauchy

**Theorem 4.21** (Morera's Theorem). *If  $f$  is continuous in a region  $\Omega$ , and if  $\int_{\gamma} f(z) dz = 0$  for  $\forall$  closed curve  $\gamma$  in  $\Omega$ . Then  $f$  is analytic in  $\Omega$ .*

*Proof.* We proved in Corollary 4.7 that under the hypothesis of theorem,  $f = F'$  where  $F$  is analytic in  $\Omega$ . The last theorem  $\Rightarrow f$  is analytic.  $\square$

Suppose  $f$  is analytic in a disk,  $\overline{B(z_0, R)}$ , and bounded on the circle  $\gamma$  given by  $|z - z_0| = R$ . Then  $\forall z \in \gamma$ ,  $|f(z)| \leq M$  for some  $M \geq 0$ . By (4.6),

$$|f^{(n)}(z)| \leq \frac{n!}{2\pi} \int_C \frac{|f(\zeta)|}{|\zeta - z_0|^{n+1}} |d\zeta| \leq \frac{n!}{2\pi} \cdot \frac{M}{R^{n+1}} \cdot 2\pi R = MR^{-n}n! \quad (4.7)$$

This inequality is known as **Cauchy's estimate**.

**Theorem 4.22** (Liouville's Theorem). *A bounded entire function (i.e. analytic in  $\mathbb{C}$ ) is constant.*

*Proof.* Suppose  $|f(z)| \leq M, \forall z \in \mathbb{C}$ . Cauchy's estimate  $\Rightarrow$

$$|f'(z)| \leq \frac{M}{R}, \forall z \in \mathbb{C}, \forall R > 0 \quad (4.8)$$

$\square$

$$\xrightarrow{R \rightarrow \infty} f'(z) = 0 \text{ for } z \in \mathbb{C} \Rightarrow f = 0.$$

**Theorem 4.23** (Fundamental Theorem for Algebra). *Every polynomial of degree  $n \geq 1$  has  $n$  roots.*

*Proof.* It suffices to prove it has at least one root.

Suppose  $P(z) = a_n z^n + \cdots + a_1 z + a_0$  with  $a_0 \neq 0$  does not have a root.

Then  $f(z) := \frac{1}{P(z)}$  is an entire function. As  $z \rightarrow \infty$ ,  $\lim_{|z| \rightarrow \infty} \frac{|P(z)|}{|z|^n} = |a_n| \Rightarrow \lim_{|z| \rightarrow \infty} \frac{1}{|P(z)|} = 0$ .

So  $f$  is bounded. By Liouville's Theorem,  $f$  is a constant. Where  $f = f(\infty) = 0$ .

That causes contradiction. □

**Theorem 4.24** (Power series). *If  $f$  is analytic in a region  $\Omega$  which contains a closed disk  $\overline{B(z_0, R)}$ , then  $f$  has a power series expansion at  $z_0$ ,*

$$f(z) = \sum_{n=0}^{\infty} \frac{f^{(n)}(z_0)}{n!} (z - z_0)^n, \quad \forall z \in B(z_0, R) \quad (4.9)$$

*Proof.*  $\forall z \in B(z_0, R)$ ,  $\forall \zeta$  with  $|\zeta - z_0| = R$ .

$$\begin{aligned} \frac{1}{\zeta - z} &= \frac{1}{(\zeta - z_0) - (z - z_0)} \\ &= \frac{1}{\zeta - z_0} \cdot \frac{1}{1 - \frac{z - z_0}{\zeta - z_0}} \\ &= \frac{1}{\zeta - z_0} \sum_{n=0}^{\infty} \left( \frac{z - z_0}{\zeta - z_0} \right)^n \\ &= \sum_{n=0}^{\infty} \frac{(z - z_0)^n}{(\zeta - z_0)^{n+1}} \end{aligned} \quad (4.10)$$

This series converges uniformly in  $\zeta$  with  $|\zeta - z_0| = R$ .

For  $\forall z \in B(z, R)$ ,

$$\begin{aligned}
f(z) &= \frac{1}{2\pi i} \int_{|\zeta-z|=R} \frac{f(\zeta)}{\zeta-z} d\zeta \\
&= \frac{1}{2\pi i} \int_{|\zeta-z|=R} f(\zeta) \sum_{n=0}^{\infty} \frac{(z-z_0)^n}{(\zeta-z_0)^{n+1}} d\zeta \\
&\stackrel{\text{uniformly}}{=} \sum_{n=0}^{\infty} \frac{1}{2\pi i} \int_{|\zeta-z|=R} \frac{f(\zeta)}{(\zeta-z_0)^{n+1}} d\zeta \cdot (z-z_0)^n \\
&\stackrel{(4.6)}{=} \sum_{n=0}^{\infty} \frac{f^{(n)}(z_0)}{n!} (z-z_0)^n
\end{aligned} \tag{4.11}$$

□

## 4.3 Local properties of analytic functions

### 4.3.1 Removable Singularities and Taylor's Theorem

We remarked that Cauchy's integral formula holds if  $f$  is analytic except at a finite number of point  $\zeta_j$  s.t.  $\lim_{\zeta \rightarrow \zeta_j} (\zeta - \zeta_j) f(\zeta) = 0$ . We will prove  $f$  can be extended to an analytic function in  $\Delta$ . In other word,  $\zeta_j$  are **removable singularities**.

**Theorem 4.25** (Riemann's Removable Singularities Theorem). *Suppose that  $f$  is analytic in the region  $\Omega' = \Omega \setminus \{\zeta_0\}$  where  $\Omega$  is also a region. Then there exists an analytic function in  $\Omega$  which coincides with  $f$  in  $\Omega'$  if and only if  $\lim_{z \rightarrow \zeta_0} (z - \zeta_0) f(z) = 0$ .*

*Proof.* The uniqueness and " $\Rightarrow$ " part is trivial since the extended function is continuous at  $\psi_0$ .

" $\Leftarrow$ ": Cauchy's integral formula  $\Rightarrow$

$$f(z) = \frac{1}{2\pi i} \int_C \frac{f(\zeta)}{\zeta - z} d\zeta, \quad \forall z \in \Delta \text{ and } z \neq \zeta_0 \tag{4.12}$$



Lemma 4.19  $\Rightarrow$  the RHS of the last equation 4.12 is analytic in  $z \in \Delta$ . Then

$$\hat{f}(z) = \begin{cases} f(z), & z \neq \zeta_0 \\ \frac{1}{2\pi i} \int_C \frac{f(\zeta)}{\zeta - \zeta_0} d\zeta, & z = \zeta_0 \end{cases} \quad (4.13)$$

is analytic in  $\Omega$ . □

We apply Theorem 4.25 to the function  $F(z) = \frac{f(z) - f(\zeta)}{z - \zeta}$ , where  $f$  is analytic in a region  $\Omega$ . Note that

$$\lim_{z \rightarrow \zeta} (z - \zeta)F(z) = 0, \quad \lim_{z \rightarrow \zeta} F(z) = f'(\zeta) \quad (4.14)$$

Theorem 4.25  $\Rightarrow \exists$  analytic function  $f_1$  on  $\Omega$  s.t.

$$f_1(z) = \begin{cases} F(z), & z \neq \zeta_0 \\ f'(\zeta), & z = \zeta_0 \end{cases} \quad (4.15)$$

we may thus write  $f(z) = f(\zeta) + (z - \zeta)f_1(z)$ .

Repeating this process for  $f_1$ , we get an analytic function  $f_2$  on  $\Omega$  s.t.

$$f_1(z) = f_1(\zeta) + (z - \zeta)f_2(z) \quad (4.16)$$

where

$$f_2(z) = \begin{cases} \frac{f_1(z) - f_1(\zeta)}{z - \zeta}, & z \neq \zeta \\ f'_2(\zeta), & z = \zeta \end{cases} \quad (4.17)$$

Continuing the recursion, we have the general form

$$f_{n-1}(z) = f_{n-1}(\zeta) + (z - \zeta)f_n(z) \quad (4.18)$$

$\Rightarrow$

$$f(z) = f(\zeta) + (z - \zeta)f_1(\zeta) + \cdots + (z - \zeta)^{n-1}f_n(\zeta) + (z - \zeta)^n f_n(z) \quad (4.19)$$

Differentiating  $n$  times and setting  $z = \zeta \Rightarrow f^{(n)}(\zeta) = n!f_n(\zeta)$

We just prove **Taylor's Theorem**

**Theorem 4.26** (Taylor's Theorem). *If  $f$  is analytic in a region  $\Omega$ ,  $\zeta \in \Omega$ , then we have*

$$f(z) = f(\zeta) + (z - \zeta)f'(\zeta) + \cdots + \frac{f^{(n-1)}(\zeta)}{(n-1)!}(z - \zeta)^{n-1} + f_n(z)(z - \zeta)^n \quad (4.20)$$

where  $f_n$  is analytic in  $\Omega$ . Moreover,

$$f_n(z) = \frac{1}{2\pi i} \int_C \frac{f(\omega)}{(\omega - \zeta)^n(\omega - z)} d\omega \quad (4.21)$$

where  $C$  is a circle in  $\Omega$  s.t. its interior  $\triangle$  is also in  $\Omega$  and  $\zeta, z \in \triangle$

*Proof.* It suffices to prove the second part.

Cauchy's integral formula  $\Rightarrow f_n(z) = \frac{1}{2\pi i} \int_C \frac{f_n(\omega)}{\omega - z} d\omega, \forall z \in \triangle$ .

For  $f_n(z)$ , we substitute the expression from (4.20). The first term is

$$\frac{1}{2\pi i} \int_C \frac{f(\omega)}{(\omega - \zeta)^n(\omega - z)} d\omega \quad (4.22)$$

The remaining terms have the following form, except for constant factors:

$$g_k(\zeta) = \int_C \frac{1}{(\omega - \zeta)^n(\omega - z)} d\omega, 1 \leq k \leq n \quad (4.23)$$

The lemma 4.19 applies to  $\varphi(\omega) = \frac{1}{\omega - z}$ ,  $g'_k(\zeta) = kg_{k-1}(\zeta)$ ,  $k \in \mathbb{N}$ ,  $\forall \zeta \in \Delta$ . So

$$\begin{aligned} g_1(\zeta) &= \int_C \frac{1}{(\omega - \zeta)(\omega - z)} d\omega \\ &= \frac{1}{\zeta - z} \left[ \int_C \frac{1}{\omega - \zeta} d\omega - \int_C \frac{1}{\omega - z} d\omega \right] \\ &= \frac{1}{\omega - z} [2\pi i - 2\pi i] = 0 \end{aligned} \quad (4.24)$$

So  $g_k(z) = 0$ ,  $\forall k \in \mathbb{N}$ ,  $\forall z \in \Delta$ . □

### 4.3.2 Zeros and poles

**Theorem 4.27.** *If  $f$  is analytic in a region  $\Omega$  and  $\exists a \in \Omega$  s.t.  $f^{(n)}(a) = 0$  for  $\forall n \in \mathbb{N} \cup \{0\}$ , then  $f \equiv 0$  in  $\Omega$ .*

*Proof.* Let  $B(a, R)$  be the disk s.t.  $\overline{B(a, R)} \subset \Omega$ . Let  $C = \partial B(0, R)$ .

Taylor's theorem  $\Rightarrow f(z) = (z - a)^n f_n(z)$  with

$$f_n(z) = \frac{1}{2\pi i} \int_C \frac{f(\omega)}{(\omega - a)^n(\omega - z)} d\omega, \quad \forall n \in \mathbb{N} \cup \{0\}, \forall z \in B(a, R) \quad (4.25)$$

Let  $M = \max_{z \in C} |f(z)|$ .

$$\begin{aligned} \Rightarrow |f_n(z)| &\leq \frac{1}{2\pi} \cdot \frac{M}{R^n(R - |z - a|)} \cdot 2\pi R \\ \Rightarrow |f(z)| &\leq \frac{|z - a|^n}{R^n} \cdot \frac{MR}{R - |z - a|} \rightarrow 0 \text{ as } n \rightarrow \infty, \forall z \in B(0, R) \\ \Rightarrow f(z) &= 0, \forall z \in B(0, R) \end{aligned}$$

Now define

$$\begin{aligned} E_1 &= \{z \in \Omega \mid f^{(n)}(z) = 0, \forall n \in \mathbb{N} \cup \{0\}\} \\ E_2 &= \Omega \setminus E_1 = \{z \in \Omega \mid f^{(n)}(z) \neq 0, \text{ for some } n \in \mathbb{N} \cup \{0\}\} \end{aligned}$$

We just proved  $E_1$  is open.  $E_2$  is open because  $f^{(n)}$  is continuous in  $\Omega$  for  $\forall n \in \mathbb{N} \cup \{0\}$ .  $\Omega$  is a region  $\Rightarrow$  either  $R_1 = \emptyset$  or  $R_2 = \emptyset$ .

The assumption of the theorem  $\Rightarrow E_1 \neq \emptyset \Rightarrow E_1 = \Omega$ .  $\square$

Let  $f$  be analytic in  $\Omega$  which is not identically zero,  $f(a) = 0$  for some  $a \in \Omega$ . The previous theorem implies  $\exists$  first  $N \in \mathbb{N}$  s.t.  $f^{(N)}(a) \neq 0$ . Taylor's theorem implies that  $f(z) = (z - a)^N f_N(z)$  where  $f_N$  is analytic and  $f_N(a) \neq 0$ . We say that  $a$  is a **zero of order  $N$**  of  $f$ .

$f_N$  is continuous  $\Rightarrow \exists \delta > 0$  s.t.  $f(z) \neq 0$  for  $\forall z \in B(a, \delta) \setminus \{0\}$ .

So we have just proved an important result: Zeros of analytic functions are isolated, or equivalently, we have a famous theorem:

**Theorem 4.28** (Identity Theorem). *If  $f$  and  $g$  are analytic in a region  $\omega$ , and  $f = g$  on a set which has an accumulation point in  $\Omega$ , then  $f(z) = g(z)$ .*

**Corollary 4.29.**

- (1) *If  $f \equiv 0$  in a subregion of  $\Omega$  and  $f$  is analytic in  $\Omega$ , then  $f \equiv 0$  in  $\Omega$ .*
- (2) *If  $f$  is analytic in  $\Omega$  and vanishes on an arc in  $\Omega$  which doesn't reduce to a point, then  $f \equiv 0$  in  $\Omega$ .*

If  $f$  is analytic in a neighborhood of  $a$ , but perhaps not at  $a$  itself, then  $a$  is called an **isolated singularity** of  $f$ .

If  $\lim_{z \rightarrow a} f(z) = \infty$ , then  $a$  is said to be a **pole** of  $f$ , and we set  $f(a) = \infty$ . Continuity implies  $\exists \delta > 0$  s.t.  $f(z) \neq 0$  for  $\forall z \in B(0, \delta) \setminus \{a\}$ . Thus,  $g(z) = \frac{1}{f(z)}$  is analytic in  $B(a, \delta) \setminus \{a\}$ .  $\lim_{z \rightarrow a} (z - a)g(z) = 0 \Rightarrow a$  is a removable singularity of  $g$ , and  $g$  has an analytic extension with  $g(a) = 0$ .  $g \not\equiv 0 \Rightarrow a$  is a zero of  $g$  with finite order. The **order of the pole** of  $f$  at  $a$  is the order  $N$  of the zero of  $g$  at  $a$ .

We can write

$$f(z) = (z - a)^{-N} f_N(z), \forall z \in B(a, \delta) \setminus \{a\} \quad (4.26)$$

where  $f_N$  is analytic and nonzero in a neighborhood of  $a$ .

**Definition 4.30.** A function which is analytic in a region  $\Omega$  except for (isolated) poles is called a **meromorphic function**.

**Example 4.31.** If  $f$  and  $g$  are analytic in  $\Omega$  and  $g \not\equiv 0$ , then  $\frac{f}{g}$  is a meromorphic function in  $\Omega$ . (See the Identity Theorem 4.28)

**Remark 4.32.** The sum, the product and quotient (if denominator is not always zero) of two meromorphic functions are meromorphic.

If  $f$  has a pole of order  $N$  at  $a$ , then  $(z - a)^N f(z)$  is analytic at  $a$ , and Taylor's theorem 4.26 implies

$$(z - a)^N f(z) = b_N + b_{N-1}(z - a) + \cdots + b_1(z - a)^{N-1} + \varphi(z) \cdot (z - a)^N \quad (4.27)$$

where  $\varphi$  is analytic at  $a$ .

$$\Rightarrow f(z) = b_N(z - a)^{-N} + b_{N-1}(z - a)^{-(N-1)} + \cdots + b_1(z - a)^{-1} + \varphi(z), \forall z \neq a. \quad (4.28)$$

**Theorem 4.33.** If  $f$  is analytic in a neighborhood of  $a$ , but perhaps not at  $a$  itself, then exactly one of the following 3 cases occurs:

(i)  $f \equiv 0$  in this neighborhood.

$$(ii) \exists \text{ integer } N \in \mathbb{Z} \text{ s.t. } \lim_{z \rightarrow a} |z - a|^\alpha \cdot |f(z)| = \begin{cases} 0, & \alpha > N \\ \infty, & \alpha < N \end{cases}$$

(iii) neither  $\lim_{z \rightarrow a} |z - a|^\alpha \cdot |f(z)| = 0$  for any  $\alpha \in \mathbb{R}$  nor  $\lim_{z \rightarrow a} |z - a|^\alpha \cdot |f(z)| = \infty$  for any  $\alpha \in \mathbb{R}$

*Proof.*

① If  $\lim_{z \rightarrow a} |z - a|^\alpha \cdot |f(z)| = 0$  for  $\forall \alpha \in \mathbb{R}$ , then  $\lim_{z \rightarrow a} |z - a|^m \cdot |f(z)| = 0$  for  $\forall$  integer  $m > \alpha$ .

$\Rightarrow (z - a)^m f(z)$  has a removable singularity at  $a$  and vanishes at  $z = a$

$\Rightarrow$  Either  $f \equiv 0$  in  $B(a, \delta) \setminus \{a\}$ , which is case (i), or  $(z - a)^m f(z)$  has a zero of

finite order  $k$  at  $a \Rightarrow \lim_{z \rightarrow a} |z - a|^\alpha \cdot |f(z)| = \begin{cases} 0, & \alpha > m - k \\ \infty, & \alpha < m - k \end{cases}$

② If  $\lim_{z \rightarrow a} |z - a|^\alpha |f(z)| = \infty$  for some  $\alpha \in \mathbb{R}$ , then  $\lim_{z \rightarrow a} |z - a|^n \cdot |f(z)| = \infty$  for  $\forall$  integer  $n < \alpha$ .

$\Rightarrow (z - a)^n f(z)$  has a pole of finite order  $l$  at  $a$

$\Rightarrow \lim_{z \rightarrow a} |z - a|^\alpha \cdot |f(z)| = \begin{cases} 0, & \alpha > n + l \\ \infty, & \alpha < n + l \end{cases}$  □

**Remark 4.34.** In case (ii),  $N$  may be called the **algebraic order** of  $f$  at  $a$ .  $N > 0$  if  $a$  is a pole,  $N < 0$  if  $a$  is a zero, and  $N = 0$  if  $f$  is analytic at  $a$  and  $f(a) \neq 0$ . The order is always an integer, there is no analytic function which tends to 0 or  $\infty$ , like a fractional power of  $|z - a|$ .

In some sense, three cases depends on whether  $\lim_{z \rightarrow a} (z - a)^N f(z)$  converges for some  $N$ .

In case (iii), the point  $a$  is an **essential isolated singularity**.

**Example 4.35.**  $f(z) = \exp(\frac{1}{z})$  has an essential isolated singularity  $z = 0$ .

**Theorem 4.36** (Weierstrass). *An analytic function comes arbitrarily close to any complex value in every neighborhood of an essential singularity. Or equivalently, the codomain of  $f$  on every neighborhood of an essential singularity is dense in  $\mathbb{C}$ .*

*Proof.* Suppose the statement is false.

$\exists A \in \mathbb{C}, \delta > 0$  and  $\varepsilon > 0$  s.t.

$$|f(z) - A| > \delta, \forall z \text{ with } 0 < |z - a| < \varepsilon \quad (4.29)$$

$\Rightarrow \lim_{z \rightarrow a} |z - a|^\alpha \cdot |f(z) - A| = \infty$  for  $\forall \alpha < 0$ .  $\Rightarrow a$  is not an essential singularity of  $f(z) - A$ .

The previous theorem  $\Rightarrow \exists \beta \in \mathbb{R}$  s.t.  $\lim_{z \rightarrow a} |z - a|^\beta \cdot |f(z) - A| = 0$ , and we may choose  $\beta > 0$ .

Then  $\lim_{z \rightarrow a} |z - a|^\beta \cdot |A| = 0 \Rightarrow \lim_{z \rightarrow a} |z - a|^\beta \cdot |f(z)| = 0$  by the triangular inequality.

So  $a$  is not an essential singularity of  $f$ , which causes contradiction!

So the statement has to be true. □

**Remark 4.37.** If  $f$  is analytic in  $|z| > R$ . We treat  $\infty$  as an isolated singularity. Removable singularity, pole or essential singularity of  $f$  at  $\infty$  is defined according to  $g(z) = f(\frac{1}{z})$  at  $z = 0$ .

### 4.3.3 The Local Mappings

**Theorem 4.38** (The Argument Principle). *Let  $f$  be analytic in a disk  $\Delta$  s.t.  $f$  does not vanish identically. Let  $z_j$  be the zeros of  $f$ , each zero being counted as many times as its order indicates. For every closed curve  $\gamma$  in  $\Delta$  which does not pass through a zero, we have*

$$\sum_j n(\gamma, z_j) = \frac{1}{2\pi i} \int_\gamma \frac{f'(z)}{f(z)} dz \quad (4.30)$$

where the sum has only a finite number of terms with nonzero value.

*Proof.*

Case I:  $f$  has exactly  $n$  zeros  $z_1, \dots, z_n$ .

By repeated application of Taylor' Theorem 4.26, we can write

$$f(z) = (z - z_1)(z - z_2) \cdots (z - z_n)g(z), \quad z \in \Delta \quad (4.31)$$

where  $g$  is analytic in  $\Delta$  and  $g(z) \neq 0$  for  $\forall z \in \Delta$ .  $\Rightarrow$

$$\frac{f'(z)}{f(z)} = \frac{1}{z - z_1} + \frac{1}{z - z_2} + \cdots + \frac{1}{z - z_n} + \frac{g'(z)}{g(z)}, \quad \forall z \in \Delta \text{ and } z \neq z_j \quad (4.32)$$

Cauchy' Theorem 4.10  $\Rightarrow$

$$\int_{\gamma} \frac{g'(z)}{g(z)} dz = 0 \Rightarrow \frac{1}{2\pi i} \int_{\gamma} \frac{f'(z)}{f(z)} dz = \sum_{j=1}^n n(\gamma, z_j) \quad (4.33)$$

Case II:  $f$  has infinitely many zeros in  $\Delta$ . Then  $\gamma$  is inside a concentric disk  $\Delta'$  smaller than  $\Delta$ .

$f \neq 0 \Rightarrow$  There is only a finite number of zeros in  $\Delta'$ .

So we can apply (4.33) to the disk  $\Delta' \Rightarrow$  (4.30) holds since  $n(\gamma, z_j) = 0$  if  $z \notin \Delta'$ . □

**Remark 4.39.**

- The function  $\omega = f(z)$  maps  $\gamma$  onto a closed curve  $\Gamma$  in the  $\omega$ -plane, and we have

$$\int_{\Gamma} \frac{d\omega}{\omega} = \int_{\gamma} \frac{f'(z)}{f(z)} dz \quad (4.34)$$

Then (4.30) can be interpreted as  $n(\Gamma, 0) = \sum_j n(\gamma, z_j)$ .

- The most useful application of the theorem is to the case when  $\gamma$  is a circle (or more generally a simple closed curve). So that

$$n(\gamma, z) = \begin{cases} 1, & z \text{ is inside } \gamma \\ 0, & z \text{ is outside } \gamma \end{cases} \quad \text{Then (4.30) yields a formula for the total num-}$$



ber of zeros enclosed by  $\gamma$ .

Let  $a \in \mathbb{C}$ . Apply the previous theorem to  $f(z) - a$

$$\sum_j n(\gamma, z_j(a)) = \frac{1}{2\pi i} \int_{\gamma} \frac{f'(z)}{f(z) - a} dz$$

where  $z_j(a)$  are zeros of  $f - a$  (or roots of  $f(z) = a$ ), and  $\gamma$  is a closed curve in  $\Delta$  which doesn't pass  $z_j(a) \Rightarrow$

$$n(\Gamma, a) = \sum_j n(\gamma, z_j(a))$$

If  $a$  and  $b$  are in the same region determined by  $\Gamma$ , then  $n(\Gamma, a) = n(\Gamma, b) \Rightarrow$

$$\sum_j n(\gamma, z_j(a)) = \sum_j n(\gamma, z_j(b)) \quad (4.35)$$

If  $\gamma$  is a circle, then  $f$  takes the values  $a$  and  $b$  equally many times inside  $\gamma$ , counted as many times as their orders indicate.

---

We have the equation that

$$\begin{aligned} \frac{1}{2\pi i} \int_{\gamma} \frac{f'(z)}{f(z) - a} dz &= n(\Gamma, a) = n(\Gamma, b) \\ &= \frac{1}{2\pi i} \int_{\Gamma} \frac{d\omega}{\omega - b} = \frac{1}{2\pi i} \int_{\Gamma} \frac{f'(z) dz}{f(z) - b} \\ &= \text{card}\{z \text{ inside } \gamma : f(z) = b\} \end{aligned} \quad (4.36)$$

**Remark 4.40.** We can find such  $a, b$  easily. If  $\omega \notin \Gamma$ , then there exists  $\varepsilon$  s.t.  $B(\omega, \varepsilon) \subset \mathbb{C} \setminus \Gamma$  which is what we need.

**Theorem 4.41.** Suppose  $f$  is analytic at  $z_0$ , and  $f(z) - \omega_0$  has a zero of order  $N \in \mathbb{N}$  at  $z_0$ . Then for  $\forall \varepsilon > 0$  sufficiently small,  $\exists \delta > 0$  s.t. for  $\forall a$  with  $|a - \omega_0| < \delta$ , the equation

$f(z) = a$  has exactly  $N$  roots in the disk  $|z - z_0| < \varepsilon$

*Proof.* We choose  $\varepsilon > 0$  s.t.

- (1)  $f$  is analytic in  $|z - z_0| \leq \varepsilon$
- (2)  $z_0$  is the only zero of  $f(z) - \omega_0$  in this disk.
- (3)  $f'(z) \neq 0$  for  $\forall z$  with  $0 < |z - z_0| < \varepsilon$

Let  $\gamma$  be the circle  $|z - z_0| < \varepsilon$  and  $\Gamma = f \circ \gamma$ .

$$\omega_0 \notin \Gamma \Rightarrow \exists \delta > 0 \text{ s.t. } B(\omega_0, \delta) \cap \Gamma = \emptyset.$$

The consequence of the argument principle 4.38, i.e. (4.36)  $\Rightarrow f$  takes all values  $a \in B(\omega_0, \delta)$  the same number of times  $N$  inside  $\gamma$ , since  $f(z) = \omega_0$  has exactly  $N$  coinciding roots inside  $\gamma$ .

(3)  $\Rightarrow$  all roots  $f(z) = a$  with  $a \in B(\omega_0, \delta) \setminus \{\omega_0\}$  are simple □

**Corollary 4.42** (open mapping theorem). *A nonconstant analytic function maps open sets onto open sets.*

*Proof.* The previous theorem  $\Rightarrow \forall \varepsilon > 0, f(B(z_0, \varepsilon)) \supset B(\omega_0, \delta)$  □

**Corollary 4.43.** *If  $f$  is analytic at  $z_0$  with  $f'(z_0) \neq 0$ . It maps a neighborhood of  $z_0$  conformally and topologically onto a region.*

*Proof.* This is the case  $N = 0$ . The previous theorem  $\Rightarrow$  There is 1-1 corresponding between the disk  $|\omega - \omega_0| < \delta$  and an open subset of  $|z - z_0| < \varepsilon$ . The open mapping theorem 4.42  $\Rightarrow f^{-1}$  is continuous  $\Rightarrow f$  is a topological map. And  $f$  is conformal on  $|z - z_0| < \varepsilon$  □

**Remark 4.44.** Under the assumption of Corollary 4.43,  $f^{-1}$  is continuous  $\Rightarrow f^{-1}$  is analytic  $\Rightarrow f^{-1}$  is conformal map.

If  $f : \Omega \rightarrow \mathbb{C}$  is 1-1 and analytic, Theorem 4.41 can hold only with  $N = 1 \Rightarrow f'(z) \neq 0$  for  $\forall z \in \mathbb{C}$ . So this condition is stronger than the conformal condition.

### 4.3.4 The Maximum Principle

**Theorem 4.45** (The maximum principle). *If  $f$  is analytic and nonconstant in a region  $\Omega$ , then its modulus  $|f|$  has no maximum in  $\Omega$ .*

*Proof.*  $\forall z_0 \in \Omega$ , the open mapping theorem 4.42  $\Rightarrow \exists$  an open disk  $|\omega - f(z_0)| < \delta$  contained in  $F(\Omega)$ . In this disk,  $\exists \omega$  s.t.  $|\omega| > |f(z_0)| \Rightarrow |f(z_0)|$  is not the maximum of  $|f|$ .  $\square$

**Theorem 4.46** (The maximum principle). *If  $f$  is defined and continuous on a closed bounded set  $E$  and analytic in the interior of  $E$ , then the maximum of  $|f|$  on  $E$  is assumed on the boundary of  $E$ .*

**Remark 4.47.** The maximum principle can also be proved by the mean value theorem 4.18 for analytic functions.

**Theorem 4.48** (Schwarz Lemma). *If  $f$  is analytic in the disk  $|z| < 1$  and satisfies  $f(0) = 0$ ,  $|f(z)| \leq 1$ ,  $\forall z \in B(0, 1)$ , then  $|f(z)| \leq |z|$  and  $|f'(0)| \leq 1$ . Furthermore, if  $|f(z)| = |z|$  for some  $z \neq 0$ , or if  $|f'(0)| = 1$ , then  $f(z) = cz$  where  $c \in \mathbb{C}$  with  $|c| = 1$ .*

*Proof.* We define  $g(z) = \begin{cases} \frac{f(z)}{z}, & z \neq 0, z \in B(0, 1) \\ f'(0), & z = 0 \end{cases}$ .

Then  $g$  is analytic with  $g'(0) = \frac{f''(0)}{2}$  using Taylor series (4.20).

The maximum principle implies that  $|g(z)| \leq \frac{1}{r}$ ,  $\forall z \in \overline{B(0, r)}$  where  $0 < r < 1$ .

Setting  $r \rightarrow 1$ , we get  $|g(z)| \leq 1$ ,  $\forall |z| < 1$ .

If  $|f(z)| = |z|$  for some  $z \neq 0$ , or  $|f'(0)| = 1$ , then  $|g| = 1$  attains its maximum at some interior points. By maximum principle,  $g$  has to be a constant.  $\square$

**Remark 4.49.** For a general analytic function  $f : B(0, R) \rightarrow B(0, M)$ ,  $z_0 \mapsto w_0$ .

$$\text{Let } T(z) = \frac{\frac{z}{R} - \frac{z_0}{R}}{1 - \frac{\bar{z}_0}{R} \cdot \frac{z}{R}}$$

$$S(\omega) = \frac{\frac{\omega}{M} - \frac{\omega_0}{M}}{1 - \frac{\bar{\omega}_0}{M} \cdot \frac{\omega}{M}}.$$

Then  $S \circ f \circ T^{-1}$  satisfies  $S \circ f \circ T^{-1}(0) = 0$  and  $|S \circ f \circ T^{-1}(z)| \leq 1 \xrightarrow{\text{Schwarz lemma}}$

$$|S \circ f \circ T^{-1}(\zeta)| \leq |\zeta|.$$

$$\Rightarrow |S \circ f(z)| \leq |T(z)| \Rightarrow$$

$$\left| \frac{M(f(z) - \omega_0)}{M^2 - \bar{\omega}_0 f(z)} \right| \leq \left| \frac{R(z - z_0)}{R^2 - \bar{z}_0 z} \right|, \forall z \in B(0, R)$$

## 4.4 The General Form of Cauchy's Theorem

### 4.4.1 Chains and Cycles

Let  $\Omega \subset \mathbb{C}$  be open. Let  $\gamma_j : [\alpha_j, \beta_j] \rightarrow \Omega$  be piecewise continuously differentiable curves in  $\Omega$ . The sum  $\gamma_1 + \gamma_2 + \cdots + \gamma_N$ , which need not be a curve is called a **chain**. The **integral** of a continuous  $f$  in  $\Omega$  along this chain is defined by

$$\int_{\gamma_1 + \gamma_2 + \cdots + \gamma_N} f = \sum_{j=1}^N \int_{\gamma_j} f. \quad (4.37)$$

Two chains are **identical** if they yield the same line integrals for all function  $f$ .

A chain is a **cycle** if it can be represented as a finite sum of closed curves.

### 4.4.2 Simple connectivity and homology

A region is **simply connected** if its complement w.r.t.  $\hat{\mathbb{C}}$  is connected.

**Example 4.50.** A disk, a half plane, a parallel strip are simply connected.

$\mathbb{C} \setminus \overline{B(0, 1)}$  is not simply connected since its complement w.r.t.  $\hat{\mathbb{C}}$  consists of  $\overline{B(0, 1)}$  and  $\infty$ .

**Theorem 4.51.** A region  $\Omega \subset \mathbb{C}$  is simply connected iff  $n(\gamma, z) = 0$  for all cycles  $\gamma$  in  $\Omega$  and all points  $z \notin \Omega$ .

*Proof.* " $\Rightarrow$ ":  $\forall$  cycle  $\gamma \subset \Omega$ ,  $\hat{\mathbb{C}} \setminus \Omega$  must be in one of the regions in  $\hat{\mathbb{C}} \setminus \gamma$  since  $\hat{\mathbb{C}} \setminus \Omega$  is connected.

$\infty \in \hat{\mathbb{C}} \setminus \Omega \Rightarrow \mathbb{C} \setminus \Omega$  is in the unbounded region of  $\mathbb{C} \setminus \gamma$ . By theorem 4.13  $n(\gamma, z) = 0, \forall z \in \mathbb{C} \setminus \Omega$ .

" $\Leftarrow$ ": Suppose  $\Omega$  is not simply connected, i.e.,  $\hat{\mathbb{C}} \setminus \Omega$  is not connected. Let  $\hat{\mathbb{C}} \setminus \Omega = A \sqcup B$  with  $A, B$  disjoint closed sets.

Suppose that  $\infty \in B$ . Then  $A$  is the bounded set.  $\delta$  is defined to be the distance between  $A$  and  $B$ . The  $\delta > 0$ . Cover  $A$  with a net of squares  $\Omega$  of side less than  $\frac{\delta}{\sqrt{2}}$ .

Suppose  $z_0 \in A$  lies at the center of a square cycle  $\gamma := \sum_{Q: Q \cap A \neq \emptyset} \partial \Omega$ .

$z_0$  is only in one of these squares  $\Rightarrow n(\gamma, z_0) = 1$ .

Since sides of squares are less than  $\frac{\delta}{\sqrt{2}}$ ,  $\gamma \cap B \neq \emptyset$ .

$\gamma \cap A = \emptyset$  after cancellations of the multiple sides.

$\Rightarrow \gamma \in \Omega$  with  $n(\gamma, z_0) = 1$ . That's a contradiction.  $\square$

A cycle  $\gamma$  in an open set  $\Omega$  is said to be **homologous to zero** w.r.t.  $\Omega$  if  $n(\gamma, z) = 0$  for  $\forall z \in \mathbb{C} \setminus \Omega$ .

In symbols, we write  $\gamma \sim 0(\text{mod } \Omega)$ . So  $\gamma_1 \sim \gamma_2$  means  $\gamma_1 - \gamma_2 \sim 0(\text{mod } \Omega)$ .

#### 4.4.3 The general form of Cauchy's theorem

**Theorem 4.52** (General form of Cauchy's theorem). *If  $f$  is analytic in an open set  $\Omega$ , then  $\int_{\gamma} f(z)dz = 0$  for  $\forall$  cycle  $\gamma$  which is homologous to zero in  $\Omega$ .*

In combination with the theorem 4.51 in the previous section, we have

**Corollary 4.53.** *If  $f$  is analytic in a simply connected region  $\Omega$ , then  $\int_{\gamma} f(z)dz = 0$  for all cycles  $\gamma$  in  $\Omega$ .*

In combination with the fundamental theorem 4.5 of Calculus for integrals in  $\mathbb{C}$ , we have

**Corollary 4.54.** If  $f$  is analytic in a simply connected region  $\Omega$ , then  $\exists$  an analytic function  $F$  in  $\Omega$  s.t.  $F'(z) = f(z)$  for  $\forall z \in \Omega$ .

**Corollary 4.55.** If  $f$  is analytic in a simply connected region  $\Omega$  and  $f(z) \neq 0$  for  $\forall z \in \Omega$ , then it is possible to define single-valued analytic branches of  $\ln f(z)$  and  $\sqrt[n]{f(z)}$  in  $\Omega$

*Proof.*  $\frac{f'(z)}{f(z)}$  is analytic in  $\Omega$   $\xrightarrow{\text{Corollary 4.54}}$   $\exists$  an analytic function  $F$  s.t.  $F'(z) = \frac{f'(z)}{f(z)}$ ,  $\forall z \in \Omega$ .

$$\Rightarrow \frac{d}{dz} [f(z)e^{-F(z)}] = 0, \forall z \in \Omega \Rightarrow f(z) = C \cdot e^{F(z)} \text{ for some } C \in \mathbb{C} \setminus \{0\}.$$

Choose  $z_0 \in \Omega$  and one of the infinite values of  $\ln f(z_0)$ .

$$\Rightarrow \exp [F(z) - F(z_0) + \ln f(z_0)] = \frac{f(z)}{C} \cdot e^{-F(z_0)} = f(z), \forall z \in \Omega.$$

$$\text{We may define } \ln f(z) = F(z) - F(z_0) + \ln f(z_0), \sqrt[n]{f(z)} = \exp \left[ \frac{1}{n} \ln f(z) \right].$$

□

*Proof of Cauchy's Theorem 4.52.* Let  $\gamma$  be a cycle in  $\Omega$  satisfying  $\gamma \sim 0 \pmod{\Omega}$ . The theorem 4.13 implies that

$$E := \{z \in \mathbb{C} \setminus \gamma : n(\gamma, z) = 0\} \text{ is open}$$

We define  $g : \Omega \times \Omega \rightarrow \mathbb{C}$  by

$$g(z, \zeta) := \begin{cases} \frac{f(z) - f(\zeta)}{z - \zeta}, & z \neq \zeta \\ f'(z), & z = \zeta \end{cases} \quad (4.38)$$

Taylor's theorem implies  $g$  is continuous in  $(z, \zeta) \in \Omega \times \Omega$ . For  $\forall \zeta_0 \in \Omega$ ,  $g(z, \zeta_0)$  is analytic in  $\Omega$  since  $\lim_{z \rightarrow \zeta_0} (z - \zeta_0)g(z, \zeta_0) = 0$ .

$$\text{Define } h(z) = \begin{cases} \frac{1}{2\pi i} \int_{\gamma} g(z, \zeta) d\zeta, & z \in \Omega \\ \frac{1}{2\pi i} \int_{\gamma} \frac{f(z)}{z - \zeta} d\zeta, & z \in E \end{cases} \cdot \gamma \sim 0 \Rightarrow n(\gamma, z) = 0, \forall z \in \mathbb{C} \setminus \Omega \Rightarrow$$

$\mathbb{C} \setminus \Omega \subset E \Rightarrow \Omega \cup E = \mathbb{C}$ . So  $h$  is defined on  $\mathbb{C}$ .

These two expressions are equal on  $\Omega \cap E$  since  $n(\gamma, z) = 0, \forall z \in \Omega \cap E$ .

Lemma 4.19 implies that  $h$  is analytic in  $E$ .

The last exercise in Homework 6  $\Rightarrow h$  is analytic on  $\Omega \Rightarrow h$  is entire.

$n(\gamma, z) = 0$  if  $|z|$  is sufficiently large  $\Rightarrow z \in E$  if  $|z|$  large enough.

$f$  is bounded on  $\gamma \Rightarrow h(z) \rightarrow 0$  as  $|z| \rightarrow \infty \Rightarrow h$  is bounded and thus  $h \equiv 0$ . By

Liouville's Theorem 4.22,

$\frac{1}{2\pi i} \int_{\gamma} g(z, \zeta) d\zeta = 0, \forall z \in \Omega \setminus \gamma$ . Then

$$n(\gamma, z)f(z) = \frac{1}{2\pi i} \int_{\gamma} \frac{f(\zeta)}{\zeta - z} d\zeta, \forall z \in \Omega \setminus \gamma \quad (4.39)$$

Equation 4.39 is the **generalized version of Cauchy's integral formula**.

Let  $z_0 \in \Omega \setminus \gamma$ . Define  $h_1(z) = (z - z_0)f(z)$ . Then  $h_1$  analytic and

$$\int_{\gamma} f(z) dz = \int_{\gamma} \frac{h_1(z)}{z - z_0} dz \stackrel{(4.39)}{=} 2\pi i \cdot n(\gamma, z_0) \cdot h_1(z_0) = 0 \quad (4.40)$$

□

## 4.5 The Calculus of Residues

### 4.5.1 The Residue Theorem

Suppose  $f$  is analytic in a region  $\Omega$  except for the isolated singularity at  $a$ . Consider a circle  $C$  centered at  $a$  and contained in  $\Omega$ . The **residue** of  $f$  at  $a$  is defined by

$$\text{Res}_{z=a} f(z) := \frac{1}{2\pi i} \int_C f(z) dz \quad (4.41)$$

It is independent of choice of circle followed from the general Cauchy's theorem 4.52.

Now suppose  $f$  is analytic in a region  $\Omega$  except for finitely many singularities

$a_j$ . Let  $\gamma$  be cycle in  $\Omega' = \Omega \setminus \{a_1, \dots, a_n\}$  which is homologous to zero w.r.t.  $\Omega$ . Then

$$\gamma \sim \sum_{j=1}^N n(\gamma, a_j) C_j \mod \Omega' \quad (4.42)$$

where  $C_j$  is any circle centered at  $a_j$  and contained in  $\Omega'$ .

The general Cauchy's theorem 4.52 implies

$$\int_{\gamma} f(z) dz = \sum_{j=1}^N n(\gamma, a_j) \int_{C_j} f(z) dz \quad (4.43)$$

$$\text{So } \frac{1}{2\pi i} \int_{\gamma} f(z) dz = \sum_{j=1}^N n(\gamma, a_j) \text{Res}_{z=a_j} f(z).$$

We just proved the residue theorem under the assumption that there are only a finite number of singularities

**Theorem 4.56** (The Residue Theorem). *Let  $f$  be analytic except for countably many isolated singularities  $a_j$  in a region  $\Omega$ . Then*

$$\frac{1}{2\pi i} \int_{\gamma} f(z) dz = \sum_{j=1}^N n(\gamma, a_j) \text{Res}_{z=a_j} f(z) \quad (4.44)$$

for any circle  $\gamma$  which is homologous to zero in  $\Omega$  and does not pass through any of  $a_j$ .

*Proof.* We already proved the case when number of singularities is finite. For the general case,

it is enough to prove that  $n(\gamma, a_j) = 0$  except for a finite number of  $a_j$ .

Let  $E := \{z \in \mathbb{C} \setminus \gamma : n(\gamma, z) = 0\}$ .

Then  $E$  is open by theorem 4.13 and contains all points outside of a large circle.

$\Rightarrow E^c$  is compact. So  $E^c$  contains a finite number of the isolated points  $a_j \Rightarrow n(\gamma, a_j) \neq 0$  only for a finite number of  $a_j$ . □

**Remark 4.57.**



- (1) In the applications it is often the case that each  $n(\gamma, a_j) \in \{0, 1\}$ .
- (2) When  $f$  has essential singularity, there is usually no simple method to compute residues.
- (3) If  $f$  has a pole of order  $N$  at  $a$ , we proved in §3.2 that

$$(z-a)^N f(z) = b_N + b_{N-1}(z-a) + \cdots + b_1(z-a)^{N-1} + \varphi(z)(z-a)^N, \quad z \neq a \quad (4.45)$$

where  $\varphi(z)$  is analytic at  $a$  and  $b_N \neq 0$ . So we have

$$\text{Res}_{z=a} f(z) = b_1 = \frac{1}{(N-1)!} \cdot \frac{d^{N-1}}{dz^{N-1}} [(z-a)^N f(z)] \quad (4.46)$$

This is because when the term  $b_1(z-a)^{-1}$  is omitted, the remainder of the RHS of (4.46) is a derivative.

In particular, if  $f(z) = \frac{g(z)}{h(z)}$ ,  $h$  has a simple zero at  $a$  and  $g(a) \neq 0$ , then

$$\text{Res}_{z=a} f(z) = \lim_{z \rightarrow a} \left[ \frac{g(z)}{h(z)} (z-a) \right] = \lim_{z \rightarrow a} \frac{g(z)}{\frac{h(z)-h(a)}{h-a}} = \frac{g(a)}{h'(a)} \quad (4.47)$$

**Example 4.58.** Compute  $\int_{|z|=1} \frac{e^{iz}}{z^3} dz$ .

*Solution.* The only pole is at  $z = 0$  with order 3. The residue theorem 4.56 implies:

$$\int_{|z|=1} \frac{e^{iz}}{z^3} dz = 2\pi i \text{Res}_{z=0} f(z) = 2\pi i \frac{1}{2!} \frac{d^2}{dz^2} \left[ z^3 \cdot \frac{e^{iz}}{z^3} \right] \Big|_{z=0} = -\pi i \quad (4.48)$$

Or one can use Taylor's series (4.20)

$$\int_{|z|=1} \frac{e^{iz}}{z^3} dz = \int_{|z|=1} \frac{1 + iz + \frac{(iz)^2}{2} + \cdots}{z^3} dz = -\pi i \quad (4.49)$$

### 4.5.2 The Argument Principle

**Theorem 4.59** (The Argument Principle). *If  $f$  is meromorphic in a region  $\Omega$  with zeros  $a_j$  and poles  $b_k$ . Then*

$$\frac{1}{2\pi i} \int_{\gamma} \frac{f'(z)}{f(z)} dz = \sum_j n(\gamma, a_j) - \sum_k n(\gamma, b_k) \quad (4.50)$$

for every cycle  $\gamma$  which is homologous to zero in  $\Omega$  and does not pass through any of zeros and poles. The sums in (4.50) are finite, and multiple zeros and poles have to be repeated as many times as their order indicates.

*Proof.* We assume that  $f$  has a finite number of zeros and poles, and denote that number by  $K$ .

Let  $N_j$  be the order of the zero or pole of  $f$  at  $z_j \in \{a_1, a_2, \dots, b_1, b_2, \dots\}$ .

$$\text{Define } \tilde{N}_j := \begin{cases} N_j, & z_j \text{ is a zero} \\ -N_j, & z_j \text{ is a pole} \end{cases}$$

Let  $g(z) = f(z) \cdot \prod_{j=1}^K (z - z_j)^{-\tilde{N}_j}$ . Then  $g$  only has removable singularities in  $\Omega$ , and we can view it as analytic in  $\Omega$ . Moreover,  $g(z) \neq 0$  for  $\forall z \in \Omega$ .

$f(z) = g(z) \cdot \prod_{j=1}^K (z - z_j)^{\tilde{N}_j}$  implies that

$$\frac{f'(z)}{f(z)} = \frac{g'(z)}{g(z)} + \sum_{j=1}^N \frac{\tilde{N}_j}{(z - z_j)}, \quad \forall z \neq z_j \quad (4.51)$$

Then

$$\begin{aligned}
\frac{1}{2\pi i} \int_{\gamma} \frac{f'(z)}{f(z)} dz &= \frac{1}{2\pi i} \int_{\gamma} \frac{g'(z)}{g(z)} dz + \sum_{j=1}^K \frac{1}{2\pi i} \int_{\gamma} \frac{\tilde{N}_j}{z - z_j} dz \\
&= \sum_{j=1}^K \tilde{N}_j \cdot n(\gamma, z_j) \\
&= \sum_j n(\gamma, a_j) - \sum_k n(\gamma, b_k)
\end{aligned}$$

If  $f$  has infinite number of zeros or poles, the proof is the same as that of the residue theorem. i.e.  $n(\gamma, z) \neq 0$  for finite many  $z$  zeros or poles.  $\square$

**Theorem 4.60** (Rouché's Theorem). *Let  $\gamma$  be a cycle which is homologous to zero in a region  $\Omega$  s.t.  $n(\gamma, z) \in \{0, 1\}, \forall z \in \Omega \setminus \gamma$ .*

*Suppose  $f, g$  are analytic in  $\Omega$ ,  $|f(z) - g(z)| < |f(z)|, \forall z \in \gamma$ . Then  $f$  and  $g$  have the same number of zeros enclosed by  $\gamma$ .*

*Proof.* First we have  $f(z) \neq 0, g(z) \neq 0$  for  $z \in \gamma$ .

Let  $\psi(z) = \frac{g(z)}{f(z)}, z \in \gamma$ . Then  $|\psi(z) - 1| < 1, \forall z \in \gamma$ . For  $\Gamma = \psi(\gamma)$

$$\int_{\gamma} \frac{\psi'(z)}{\psi(z)} dz = \int_{\Gamma} \frac{d\omega}{\omega} = 2\pi i \cdot n(\Gamma, 0) = 0$$

since 0 is in the unbounded connected component of  $\mathbb{C} \setminus \Gamma$ .

The argument principle implies that  $0 = \frac{1}{2\pi i} \int_{\gamma} \frac{\psi'(z)}{\psi(z)} dz$  is equal to the difference of number of zeros of  $g$  and  $f$ .  $\square$

The argument principle can be generalized to

**Theorem 4.61** (The Argument Principle). *Under the hypothesis of the argument principle 4.59, and if  $h$  is analytic in  $\Omega$ , then we have*

$$\frac{1}{2\pi i} \int_{\gamma} h(z) \frac{f'(z)}{f(z)} dz = \sum_j n(\gamma, a_j) h(a_j) - \sum_k n(\gamma, b_k) h(b_k) \quad (4.52)$$

**Remark 4.62.** In §5.3.3, we proved Theorem 4.41 that if  $f$  is analytic at  $z_0$ , and  $f(z) - \omega_0$  has zero of order  $N$  at  $z_0$ , then for  $\varepsilon$  small enough, there exists  $\delta > 0$  s.t.  $\forall \omega$  with  $|\omega - \omega_0| < \delta$ ,  $f(z) = \omega$  has exactly  $N$  roots  $z_j(\omega)$  in the disk  $|z - z_0| < \varepsilon$ . If we apply (4.52) with  $h(z) = z$ , we get

$$\sum_{j=1}^N z_j(\omega) = \frac{1}{2\pi i} \int_{|z-z_0|=\varepsilon} z \frac{f'(z)}{f(z) - \omega} dz, \quad \forall \omega \in B(\omega_0, \delta) \quad (4.53)$$

For  $N = 1$ , the inverse function  $f^{-1}(\omega)$  can thus be represented by

$$f^{-1}(\omega) = \frac{1}{2\pi i} \int_{|z-z_0|=\varepsilon} z \frac{f'(z)}{f(z) - \omega} dz, \quad \forall \omega \in B(\omega_0, \delta) \quad (4.54)$$

If we apply (4.52) with  $h(z) = z^m$ , we get

$$\sum_{j=1}^N z_j^m(\omega) = \frac{1}{2\pi i} \int_{|z-z_0|=\varepsilon} \frac{z^m f'(z)}{f(z) - \omega} dz, \quad \forall \omega \in B(\omega_0, \delta) \quad (4.55)$$

### 4.5.3 Evaluation of Definite integrals

① All integrals of the form  $\int_0^{2\pi} R(\cos \theta, \sin \theta) d\theta$ , where the integrand is a rational function of  $\cos \theta$  and  $\sin \theta$ . The substitution  $z = e^{i\theta}$  transform it into the line integral

$$\int_{|z|=1} R\left(\frac{z + z^{-1}}{2}, \frac{z - z^{-1}}{2i}\right) \frac{dz}{iz}$$

It remains to determine the residues which correspond to the poles of the integrand inside  $\{z : |z| < 1\}$ .

**Example 4.63.** Compute  $\int_0^\pi \frac{d\theta}{a + \cos \theta}, a > 1$ .

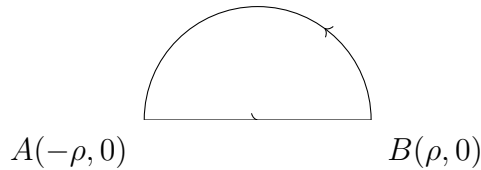
$$\begin{aligned} \int_0^\pi \frac{d\theta}{a + \cos \theta} &= \frac{1}{2} \int_0^{2\pi} \frac{d\theta}{a + \cos \theta} \\ &\stackrel{z=e^{i\theta}}{=} \frac{1}{a + \frac{z+z^{-1}}{2}} \cdot \frac{dz}{iz} = \frac{1}{i} \int_{|z|=1} \frac{1}{z^2 + 2az + z} dz \\ &= \frac{1}{i} \int_{|z|=1} \frac{1}{[z - (-a + \sqrt{a^2 - 1})] \cdot [z - (-a - \sqrt{a^2 - 1})]} dz \end{aligned}$$

Note that  $|-a + \sqrt{a^2 - 1}| = \frac{1}{|a + \sqrt{a^2 - 1}|} < 1$  and  $|-a - \sqrt{a^2 - 1}| > 1$ .

Residue Theorem 4.56 implies that

$$\begin{aligned} \int_0^\pi \frac{d\theta}{a + \cos \theta} &= \frac{1}{i} \cdot 2\pi i \operatorname{Res}_{z=-a+\sqrt{a^2-1}} f(z) \\ &= 2\pi \cdot \frac{1}{-a + \sqrt{a^2 - 1} - (-a - \sqrt{a^2 - 1})} \\ &= \frac{\pi}{\sqrt{a^2 - 1}} \end{aligned}$$

② An integral of the form  $\int_{-\infty}^\infty R(x)dx$  converges if and only if in the rational function  $R$ , the degree of denominator  $\geq$  the degree of numerator+2 and has no pole lies in  $\mathbb{R}$ .



Consider this semicircle  $\gamma$ . If  $\rho$  is large enough,  $\gamma$  encloses all poles of  $R$  in the upper half-plane. It is easy to see that

$$\lim_{\rho \rightarrow \infty} \int_{z=\rho e^{it}, 0 \leq t \leq \pi} R(z) dz = 0$$

So we have  $\int_{-\infty}^{+\infty} R(x)dx = 2\pi i \sum_{y>0} \text{Res}_{x+iy} R(z)$ .

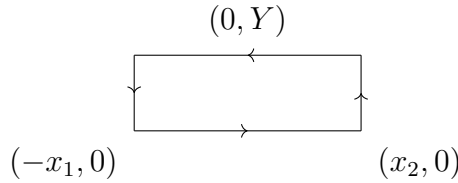
③

(a) The same method can be applied to  $\int_{-\infty}^{\infty} R(x)e^{ix}dx$ , where the rational function has a zero of at least two at  $\infty$ . Then  $|e^{iz}| = e^{-y} \geq 1$  in the upper-half plane.

So

$$\int_{-\infty}^{\infty} R(x)e^{ix}dx = 2\pi i \sum_{y>0} \text{Res}_{x+iy} R(z)e^{iz}$$

(b) We now consider the case that  $R$  has only a simple zero at  $\infty$  and no pole on  $\mathbb{R}$ .



There exists  $M > 0$  and  $C > 0$  s.t. this rectangle all poles of  $R$  in the upper half-plane if  $x_1 > M, x_2 > M$ , and  $Y > M$ .  $|zR(z)| \leq C$  if  $|z| \geq M$ .

$$\left| \int_{\text{right vertical line}} R(z)e^{iz}dz \right| \leq \int_0^Y \frac{C}{|z|} e^{-y} dy \leq \frac{C}{x_2} \int_0^Y e^{-y} dy \leq \frac{C}{x_2}$$

Similarly,

$$\left| \int_{\text{left vertical line}} R(z)e^{iz}dz \right| \leq \frac{C}{x_1}$$

$$\left| \int_{\text{upper horizontal line}} R(z)e^{iz}dz \right| \leq \int_{-x_1}^{x_2} \frac{C}{|z|} e^{-Y} dx \leq \frac{Ce^{-Y}}{Y} \int_{-x_1}^{x_2} dx = \frac{Ce^{-Y}(x_1 + x_2)}{Y}$$

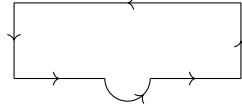
Fix  $x_1$  and  $x_2$ , setting  $Y \rightarrow \infty$ . Then

$$\left| \int_{-x_1}^{x_2} R(x)e^{ix}dx - 2\pi i \sum_{y>0} \text{Res}_{x+iy} R(z)e^{iz} \right| \leq C \left( \frac{1}{x_1} + \frac{1}{x_2} \right)$$

So

$$\int_{-x_1}^{x_2} R(x)e^{ix} dx = 2\pi i \sum_{y>0} \text{Res}_{x+iy} R(z)e^{iz}$$

(c)  $R$  has only a single zero at  $\infty$  and a simple pole at 0. Suppose that  $R(z)e^{iz} = \frac{B}{z} + \varphi(z)$  where  $\varphi$  is analytic at 0.



Then it is easy to use this curve to prove that

$$\lim_{\delta \rightarrow 0^+} \left[ \int_{-\infty}^{-\delta} R(x)e^{ix} dx + \int_{\delta}^{\infty} R(x)e^{ix} dx \right] = 2\pi i \left[ \sum_{y>0} \text{Res}_{x+iy} R(z)e^{iz} + \frac{B}{2} \right]$$

Denote this integral as P.V.  $\left[ \int_{-\infty}^{\infty} R(x)e^{ix} dx \right]$ , called **Cauchy principle value of the integral**.

**Example 4.64.**

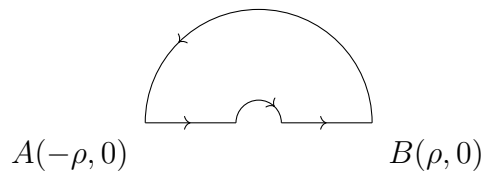
$$\begin{aligned} \text{P.V.} \left( \int_{-\infty}^{\infty} \frac{e^{ix}}{x} dx \right) &= 2\pi i \cdot \frac{1}{2} = \pi i \\ &= \text{P.V.} \left( \int_{-\infty}^{\infty} \frac{\cos x}{x} dx + i \int_{-\infty}^{\infty} \frac{\sin x}{x} dx \right) \\ &= \text{P.V.} \left( \int_{-\infty}^{\infty} \frac{\cos x}{x} dx \right) + i \int_{-\infty}^{\infty} \frac{\sin x}{x} dx \\ &= i \cdot 2 \int_0^{\infty} \frac{\sin x}{x} dx \end{aligned}$$

So we obtain  $\int_0^{\infty} \frac{\sin x}{x} dx = \frac{\pi}{2}$

④ Calculate  $\int_0^{\infty} x^{\alpha} R(x) dx$ , where  $\alpha \in (0, 1)$ ,  $R(z)$  has a zero of order larger than 2 at  $\infty$ , and at most a simple pole at 0. Then

$$\int_0^{\infty} x^{\alpha} R(x) dx \stackrel{x=t^2}{=} 2 \int_0^{\infty} t^{2\alpha+1} R(t^2) dt \quad (4.56)$$

$f(x) = z^{2\alpha}$  is analytic in  $\mathbb{C} \setminus \{iy : y \leq 0\}$  if we require  $\arg f(x) \in (-\pi\alpha, 3\pi\alpha)$ .



Applying residue theorem 4.56 to  $z^{2\alpha+1}R(z^2)$  and take limits we have

$$\int_{-\infty}^{\infty} z^{2\alpha+1}R(z^2)dz = 2\pi i \sum_{y>0} \text{Res}_{x+iy} z^{2\alpha+1}R(z^2)$$

And

$$\begin{aligned} \int_{-\infty}^{\infty} z^{2\alpha+1}R(z^2)dz &= \int_0^{\infty} z^{2\alpha+1}R(z^2)dz + \int_0^{\infty} (-z)^{2\alpha+1}R(z^2)dz \\ &= (1 - e^{2\alpha\pi i})(1 - e^{2\alpha\pi i}) \int_0^{\infty} z^{2\alpha+1}R(z^2)dz \end{aligned}$$

$$\text{So } \int_0^{\infty} x^{\alpha}R(x) = \frac{2}{1 - e^{2\alpha\pi i}} \cdot 2\pi i \cdot \sum_{y>0} \text{Res}_{x+iy} z^{2\alpha+1}R(z^2).$$

**Example 4.65.** Compute  $\int_0^{\infty} \frac{x^{\frac{1}{2}}}{1+x^2}dx$ .

$$\int_0^{\infty} \frac{x^{\frac{1}{2}}}{1+x^2}dx = 2 \int_0^{\infty} \frac{t^2}{1+t^4} = \int_{-\infty}^{\infty} \frac{t^2}{1+t^4}dt$$

Take  $f(z) = \frac{z^2}{1+z^4}$  and apply Residue Theorem 4.56 to  $f$ , we have

$$\int_{-\infty}^{\infty} \frac{t^2}{1+t^4} = \int_{-\infty}^{\infty} f(z)dz = 2\pi i \sum_{y>0} \text{Res}_{x+iy} f(z) = 2\pi i [\text{Res}_{\exp(\frac{i\pi}{4})} f + \text{Res}_{\exp(\frac{3i\pi}{4})} f] = \frac{\sqrt{2}\pi}{2}$$



## 4.6 Harmonic Functions

### 4.6.1 Definition and basis properties

A real-valued function  $u(z) = u(x, y)$  in a region  $\Omega$  is **harmonic** if it is in  $C^2$  and satisfying the Laplace's equation

$$\Delta u = \frac{\partial^2 u}{\partial x^2} + \frac{\partial^2 u}{\partial y^2} = 0 \quad (4.57)$$

We already know that if  $f(z) = u(x, y) + iv(x, y)$  is analytic in  $\Omega$ , then  $u$  and  $v$  satisfy the Cauchy-Riemann equations, and are therefore harmonic in  $\Omega$ .

If  $u$  is harmonic in  $\Omega$ , then  $f(z) = \frac{\partial u}{\partial x} - i \frac{\partial u}{\partial y}$  is analytic in  $\Omega$ . This is because, for  $U := \frac{\partial u}{\partial x}, V = -\frac{\partial u}{\partial y}$ .

$$\begin{cases} \frac{\partial U}{\partial x} = \frac{\partial^2 u}{\partial x^2} = -\frac{\partial^2 u}{\partial y^2} = \frac{\partial V}{\partial y} \\ \frac{\partial U}{\partial y} = \frac{\partial^2 u}{\partial x \partial y} = \frac{\partial^2 u}{\partial y \partial x} = \frac{\partial V}{\partial x} \end{cases} \quad (4.58)$$

We may write the differential

$$f dz = \left( \frac{\partial u}{\partial x} - i \frac{\partial u}{\partial y} \right) (dx + i dy) = \left( \frac{\partial u}{\partial x} dx + \frac{\partial u}{\partial y} dy \right) + i \left( \frac{\partial u}{\partial x} dy - \frac{\partial u}{\partial y} dx \right) \quad (4.59)$$

In this expression, the real part is  $du = \frac{\partial u}{\partial x} dx + \frac{\partial u}{\partial y} dy$ . And if  $u$  has a conjugate harmonic function  $v$ , then the imaginary part is

$$dv = \frac{\partial v}{\partial x} dx + \frac{\partial v}{\partial y} dy = -\frac{\partial u}{\partial y} dx + \frac{\partial u}{\partial x} dy$$

In general, however, there is no (single-valued) conjugate function. We thus

define

$$*du := -\frac{\partial u}{\partial y}dx + \frac{\partial u}{\partial x}dy \quad (4.60)$$

and call  $*du$  the **conjugate differential of  $du$** . We may write (4.59) as

$$f dz = du + i*du \quad (4.61)$$

**Lemma 4.66.** *Let  $\gamma$  be a cycle in a region  $\Omega$  s.t.  $\gamma \sim 0 \pmod{\Omega}$ . Then*

$$\int_{\gamma} *du = 0 \quad (4.62)$$

*Proof.* (4.61) implies  $\int_{\gamma} f(z)dz = \int_{\gamma} du + i \int_{\gamma} *du$ .

Cauchy's Theorem 4.52 implies  $\int_{\gamma} f(z)dz = 0$ . And  $\int_{\gamma} du = 0$  since  $du$  is an exact differential.

Hence,  $\int_{\gamma} *du = 0$ . □

**Theorem 4.67.** *If  $\Omega$  is simply connected and  $u$  is harmonic in  $\Omega$ , then  $u$  has a (single-valued) conjugate function  $v$  which uniquely determined up to additive constant.*

*Proof.* The last lemma 4.66 and theorem 4.4 imply that there is a (single-valued) function  $v$  s.t.  $*du = dv$  i.e.

$$\frac{\partial v}{\partial x} = -\frac{\partial u}{\partial y}, \quad \frac{\partial v}{\partial y} = \frac{\partial u}{\partial x}$$

So  $v$  is a conjugate function of  $u$ . (Notice that we use the property of simply connection that every cycle in  $\Omega$  is homologous to zero)

If  $v_1$  and  $v_2$  are two such harmonic functions, then  $f_1 = u + iv_1$ ,  $f_2 = u + iv_2$  are both analytic in  $\Omega$ . So  $f_1 - f_2 = i(v_1 - v_2)$  is analytic in  $\Omega$ . The open mapping theorem 4.42 implies  $f_1 - f_2$  is a constant. □

**Remark 4.68.** We see that the open mapping theorem 4.42 has such power that it gives a way to prove an analytic function with some closed property is constant.

**Remark 4.69.** The condition on simply connectness can not be removed. For instance,  $u(z) = \ln |z|$  is harmonic in  $\mathbb{C} \setminus \{0\}$ , but it cannot be written as the real part of an analytic function since  $\ln |z| = \operatorname{Re} \ln z$

## 4.6.2 The Mean-value Property

**Theorem 4.70** (Mean-value Property). *Let  $u$  be harmonic in a region  $\Omega$ . If  $\overline{B(z, R)} \subset \Omega$ , then*

$$u(z) = \int_0^{2\pi} u(z_0 + Re^{i\theta}) d\theta \quad (4.63)$$

*Proof.* The previous theorem 4.67 implies that  $u$  has a conjugate function  $v$  on  $\overline{B(z_0, R)}$ . Consider the analytic function  $f = u + iv$ . The Cauchy integral formula 4.39 shows

$$f(z_0) = \frac{1}{2\pi i} \int_{|z-z_0|=R} \frac{f(z)}{z-z_0} dz = \frac{1}{2\pi} \int_0^{2\pi} f(z_0 + Re^{i\theta}) d\theta \quad (4.64)$$

This theorem follows by taking the real part of the equation. □

**Theorem 4.71.** *If  $u$  is harmonic in  $\Omega$ , and  $\{z \in \mathbb{C} : 0 < R_1 \leq |z - z_0| \leq R_2\} \subset \Omega$ , then*

$$\frac{1}{2\pi} \int_0^{2\pi} u(z_0 + re^{i\theta}) d\theta = \alpha \ln r + \beta \in [R_1, R_2] \quad (4.65)$$

where  $\alpha$  and  $\beta$  are constants

*Proof.* In polar coordinate  $(r, \theta)$ ,

$$\Delta = \frac{\partial^2}{\partial r^2} + \frac{1}{r} \cdot \frac{\partial}{\partial r} + \frac{1}{r^2} \cdot \frac{\partial^2}{\partial \theta^2} = r^{-1} \frac{\partial}{\partial r} \left( r \cdot \frac{\partial}{\partial r} \right) + r^{-2} \frac{\partial^2}{\partial \theta^2}$$

Let  $U(r) = \int_0^{2\pi} u(z_0 + re^{i\theta})d\theta$ .  $z \mapsto u(z_0 + z)$  is harmonic. Then

$$\Delta U(r) = \frac{1}{2\pi} \int_0^{2\pi} \Delta u(z_0 + re^{i\theta})d\theta = 0 \quad (4.66)$$

Therefore,  $\frac{\partial}{\partial r} \left( r \frac{\partial U}{\partial r} \right) = 0$ . Therefore,  $U(r) = \alpha \ln r + \beta$ . □

**Theorem 4.72** (Maximal Principle of Harmonic Function). *A nonconstant harmonic function has neither a maximum nor a minimum in its region of definition.*

*Proof.* Suppose  $u$  attains a maximum at  $z_0 \in \Omega$ .  $\exists R > 0$  s.t.  $B(z_0, R) \subset \Omega$ . Suppose  $\exists a \in B(z_0, R)$  s.t.  $u(a) < u(z_0) = M$ .

The mean-value property implies

$$M = u(z_0) = \frac{1}{2\pi} \int_0^{2\pi} u(z_0 + re^{i\theta})d\theta < M$$

by continuity. This causes a contradiction.

So  $u$  is a constant in  $B(z_0, R)$ .

Then for every  $z_1$  in the region, since we can find a series of disk such that the center of the disk is in the previous disk and  $z_0$  is the center of the first disk,  $z_1$  is in the last disk.

Then by the property above,  $u(z_0) = u(z_1)$ . So  $u$  is a constant, which causes a contradiction! □

**Theorem 4.73.**  *$u$  is harmonic in the interior of  $E$  and continuous on  $\overline{E}$ , which is bounded, then the maximum and minimum of  $u$  are taken on  $\partial E$ .*

*Proof.* It is followed from Theorem 4.72 □

It follows that the maximal norm of harmonic function  $u$  is taken on  $\partial E$ , which implies a corollary

**Corollary 4.74.** *If  $u_1$  and  $u_2$  are continuous on a closed bounded set  $E$  which are harmonic in the interior of  $E$  and  $u_1 = u_2$  on the boundary of  $E$ , then  $u_1 = u_2$  on  $E$ .*

*Proof.* Apply the maximum and minimum principle to  $u_1 - u_2$  □

### 4.6.3 Poisson's Formula

**Theorem 4.75** (Poisson's formula). *Suppose that  $u$  is harmonic on  $B(0, R)$  and continuous on  $\overline{B(0, R)}$ . Then*

$$u(a) = \frac{1}{2\pi} \int_{|z|=R} \frac{R^2 - |a|^2}{|z - a|^2} u(z) d\theta \quad (4.67)$$

for  $\forall a \in B(0, R)$ .

*Proof.* The idea is to use Möbius transformation and apply mean-value property.

Let  $\zeta = S^{-1}(z) = \frac{\frac{z}{R} - \frac{a}{R}}{1 - \frac{\bar{a}}{R} \cdot \frac{z}{R}} = \frac{R(z - a)}{R^2 - \bar{a} \cdot z}$ . So  $z = S(\zeta) = \frac{R(R\zeta + a)}{R + \bar{a}\zeta}$  is a Möbius transformation mapping the unit circle into  $B(0, R)$  in which  $0 \mapsto a$ .

Suppose  $u(S(\zeta))$  is harmonic on  $|\zeta| \leq 1$  (See Remark 4.77). The mean-value property implies

$$u(S(0)) = u(a) = \frac{-i}{2\pi} \int_{|\zeta|=1} u(\zeta) \frac{d\zeta}{\zeta} \quad (4.68)$$

where

$$\begin{aligned} \frac{d\zeta}{\zeta} &= \frac{R^2 - \bar{a}z}{R(z - a)} \cdot \frac{R(R^2 - |a|^2)}{(R^2 - \bar{a}z)^2} dz \\ &= \left[ \frac{1}{z - a} + \frac{\bar{a}}{R^2 - \bar{a}z} \right] dz \\ &\stackrel{z=Re^{i\theta}}{=} \left[ \frac{iz}{z - a} + \frac{i\bar{a}z}{R^2 - \bar{a}z} \right] d\theta \\ &\stackrel{R^2=z\bar{z}}{=} \left[ \frac{iz}{z - a} + \frac{i\bar{a}}{\bar{z} - \bar{a}} \right] d\theta \\ &= i \frac{R^2 - a^2}{|z - a|^2} d\theta \end{aligned} \quad (4.69)$$

Combined with (4.68) and (4.69), we obtain (4.67) in a stronger assumption.

$$u(a) = \frac{1}{2\pi} \int_{|z|=R} \frac{R^2 - |a|^2}{|z - a|^2} u(z) d\theta$$

□

**Remark 4.76.** Note that

$$\begin{aligned} \frac{R^2 - |a|^2}{|z - a|^2} &= \frac{z}{z - a} + \frac{\bar{a}}{\bar{z} - \bar{a}} \\ &= \frac{1}{2} \left[ \frac{z}{z - a} + \frac{\bar{a}}{\bar{z} - \bar{a}} + \frac{\bar{z}}{\bar{z} - \bar{a}} + \frac{a}{z - a} \right] \\ &= \frac{1}{2} \left( \frac{z + a}{z - a} + \frac{\bar{z} + \bar{a}}{\bar{z} - \bar{a}} \right) \\ &= \operatorname{Re} \left( \frac{z + a}{z - a} \right) \end{aligned} \tag{4.70}$$

So the Poisson's formula can also be written as

$$u(a) = \frac{1}{2\pi} \int_{|z|=R} \operatorname{Re} \left( \frac{z + a}{z - a} \right) u(z) d\theta, \quad \forall a \in B(0, R) \tag{4.71}$$

or

$$u(a) = \operatorname{Re} \left[ \frac{1}{2\pi i} \int_{|z|=R} \frac{z + a}{z - a} \cdot \frac{u(z)}{z} dz \right], \quad \forall a \in B(0, R) \tag{4.72}$$

By Lemma 4.19,  $u$  is the real part of the analytic function

$$f(z) = \frac{1}{2\pi i} \int_{|\zeta|=R} \frac{\zeta + z}{\zeta - z} \cdot \frac{u(\zeta)}{\zeta} d\zeta + iC$$

where  $C \in \mathbb{R}$ . (4.72) is called the **Schwarz Formula**.

**Remark 4.77.** For the general assumption in the theorem 4.75, note that if  $r \in$

$(0, 1)$ , then  $u(rz)$  is harmonic in  $\overline{B(0, R)}$ . The above proof implies

$$u(ra) = \frac{1}{2\pi} \int_{|z|=R} \frac{R^2 - |a|^2}{|z - a|^2} u(rz) d\theta \quad (4.73)$$

Since  $u$  is continuous on a compact set  $\overline{B(0, R)}$ , it is uniformly continuous. Then  $u(rz) \rightrightarrows u(z)$  uniformly for  $|z| = R$  as  $r \rightarrow 1$ .

Then take  $r \rightarrow 0$  in (4.73) and we obtain Poisson's formula holds under the assumption of the theorem.

#### 4.6.4 Schwarz's Theorem

We can easily define harmonic function  $u$  in the interior if  $u$  is piecewise continuous on the boundary by (4.72). However, it is not always continuous at the boundary. The next theorem gives a condition that such an extended function  $u$  exists if  $u$  is continuous on the boundary.

**Theorem 4.78** (Schwarz's theorem). *Given a piecewise continuous function  $u$  on  $[0, 2\pi]$ , the **Poisson integral***

$$P_u(z) = \frac{1}{2\pi} \int_0^{2\pi} \operatorname{Re} \left( \frac{e^{i\theta} + z}{e^{i\theta} - z} \right) u(\theta) d\theta \quad (4.74)$$

is harmonic for  $|z| < 1$ . Moreover,  $\lim_{\substack{z \rightarrow e^{i\theta} \\ |z| < 1}} P_u(z) = u(\theta_0)$  if  $u$  is continuous at  $\theta_0$ .

*Proof.* Lemma 4.19 implies  $P_u$  is harmonic in  $|z| < 1$ .

Note that  $P$  is a **linear functional** which maps piecewise continuous function  $u$  on  $[0, 2\pi]$  to harmonic function  $P_u$  on the unit disk. Explicitly,

$$\begin{cases} P_{u_1+u_2} = P_{u_1} + P_{u_2} \\ P_{\lambda u} = \lambda P_u \end{cases} \quad (4.75)$$

Applying Poisson's formula 4.75 to  $u \equiv 1$ , we get  $P_1 = 1$ , and thus  $P_c = c, \forall c \in \mathbb{R}$ .

If  $u \geq 0$  on  $[0, 2\pi]$ , then  $P_u \geq 0$ . (4.75) follows that if  $-\infty < m \leq u(\theta) \leq M < \infty$  for  $\forall \theta \in [0, 2\pi]$ , then  $m \leq P_u \leq M$ .

By replacing  $u$  with  $u - u(\theta_0)$ , WLOG, we may assume  $u(\theta_0) = 0$ .

If  $u$  is continuous at  $\theta_0$ , then  $\forall \varepsilon > 0$ , one can choose  $C_2 \subset \partial B(0, 1)$  s.t.  $e^{i\theta_0} \in \text{int}(C_2)$  and  $|u(\theta)| < \frac{\varepsilon}{2}$  for  $\forall e^{i\theta} \in C_2$ . Let  $C_1 = \partial B(0, 1) \setminus C_2$ . Define

$$u_1(\theta) = \begin{cases} u(\theta), & e^{i\theta} \in C_1 \\ 0, & \text{otherwise} \end{cases} \quad u_2(\theta) = \begin{cases} u(\theta), & e^{i\theta} \in C_2 \\ 0, & \text{otherwise} \end{cases} \quad (4.76)$$

Linearity of  $P$  implies  $P_u = P_{u_1} + P_{u_2}$ .  $|u_2| < \frac{\varepsilon}{2} \Rightarrow |P_{u_1}(z)| < \frac{\varepsilon}{2}, \forall z \in B(0, 1)$ . So

$$\lim_{\substack{z \rightarrow e^{i\theta} \\ |z| < 1}} P_{u_2}(z) = 0$$

$P_{u_1}$  can be viewed as a line integral over  $C_1 \Rightarrow P_{u_1}$  is harmonic in  $\mathbb{C} \setminus C_1$ . So  $P_{u_1}$

is harmonic in  $\mathbb{C} \setminus C_1$  by lemma 4.19.

$$\text{Re} \left( \frac{e^{i\theta} + z}{e^{i\theta} - z} \right) = \frac{1 - |z|^2}{|z - e^{i\theta}|^2} \Rightarrow P_{u_1}(z) = 0 \text{ for } z \in C_2. \text{ Continuity implies}$$

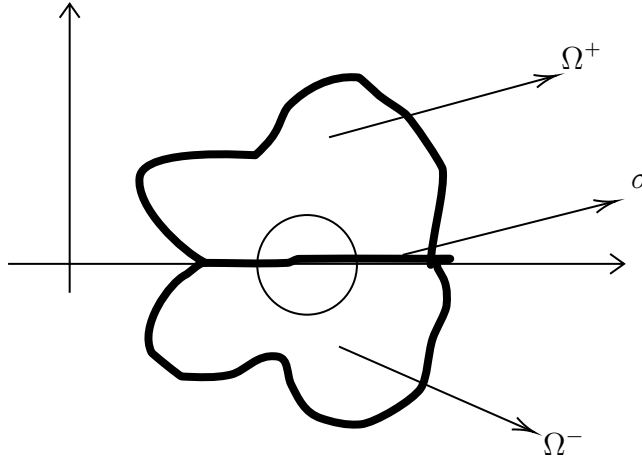
$$\lim_{\substack{z \rightarrow e^{i\theta} \\ |z| < 1}} P_{u_1}(z) = 0.$$

$$\text{Therefore, } \lim_{\substack{z \rightarrow e^{i\theta} \\ |z| < 1}} P_u(z) = 0 = u(\theta_0) \quad \square$$

#### 4.6.5 The Reflection Principle

**Theorem 4.79** (The reflection principle). *Let  $\Omega$  be a region which is symmetric w.r.t. the  $x$ -axis, and  $\Omega^+ := \Omega \cap \{z \in \mathbb{C} : \text{Im}z > 0\}$ ,  $\sigma = \Omega \cap \{z \in \mathbb{C} : \text{Im}z = 0\}$ . Suppose that  $v$  is continuous in  $\Omega^+ \cup \sigma$ , harmonic on  $\Omega^+$ , and zero on  $\sigma$ . Then  $v$  has a harmonic extension to  $\Omega$ , which satisfies  $v(\bar{z}) = -v(z)$ . In the same situation, if  $v$  is the imaginary part of an analytic function  $f(z)$  in  $\Omega^+$ , then  $f(z)$  has an analytic extension which satisfies  $f(z) = \overline{f(\bar{z})}$ .*





$$\text{Proof. } h(z) = \begin{cases} v(z), & z \in \Omega^+ \\ 0, & z \in \sigma \\ v(\bar{z}), & z \in \Omega^- \end{cases}.$$

We need to prove that  $h$  is harmonic in  $\Omega$ . It suffices to prove  $h$  is harmonic on  $\sigma$ . Choose  $\delta$  small s.t.  $\overline{B(x, \delta)} \subset \Omega$ . Let  $P_h$  be the Poisson integral w.r.t.  $\partial B(x_0, \delta)$  with the boundary values  $h$ .

Schwarz' theorem 4.78 implies  $P_h$  is harmonic in  $\overline{B(x, \delta)}$  and continuous on  $\overline{B(x_0, \delta)}$ . It follows that,

(1)  $v - P_h$  is harmonic in the upper half disk  $B(x_0, \delta) \cap \{z \in \mathbb{C} : \text{Im}z > 0\}$ .

(2)  $v - P_h = 0$  on  $\partial B(x, \delta) \cap \{z \in \mathbb{C} : \text{Im}z \geq 0\}$ .

$\forall x \in B(x_0, \delta) \cap \sigma$ , apply Poisson formula 4.67

$$P_h(x) = \frac{1}{2\pi} \int_0^{2\pi} \frac{\delta^2 - |x|^2}{|\delta e^{i\theta} - x|^2} h(\delta e^{i\theta}) d\theta = 0 \quad (4.77)$$

by symmetry.

Apply the maximum and minimum principle 4.74 to  $h - P_h$ , we get  $h = P_h$  in  $B(x, \delta) \cap \{z \in \mathbb{C} : \text{Im}z \geq 0\}$ .

The same argument works for the lower half disk.

So  $h = P_h$  in  $B(x_0, \delta) \Rightarrow h$  is harmonic at  $x_0$ .

For the second part of the theorem, it is enough to prove  $\tilde{f}(z) = \begin{cases} f(z), & z \in \Omega^+ \\ \overline{f(\bar{z})}, & z \in \Omega^- \end{cases}$  is analytic on  $\sigma$ .

For  $\forall x_0 \in \sigma$ , let  $B(x_0, \delta)$  be as before. We already proved  $v$  can be extended to a harmonic function in  $B(x_0, \delta)$ .  $v$  has a conjugate function  $-u_0$  in the same disk. We may normalize  $u_0$  s.t.  $u_0 = \operatorname{Re} f(z)$  in  $B(x_0, \delta \cap \{z \in \mathbb{C}, \operatorname{Im} z > 0\})$ . Define  $g(z) := u_0(z) - u_0(\bar{z})$ .

Then  $g(x) = 0$  for  $x \in B(x_0, \delta) \cap \sigma \Rightarrow$

$$\begin{aligned} \frac{\partial g}{\partial x}(z) &= 0, \forall z \in B(x_0, \delta) \cap \sigma \\ \frac{\partial g}{\partial y}(z) &= 2 \frac{\partial u_0}{\partial y}(z) = -2 \frac{\partial v}{\partial x}(z) = 0 \end{aligned}$$

So the analytic function  $\frac{\partial g}{\partial x} - i \frac{\partial g}{\partial y} \equiv 0$  on  $B(x, \delta) \cap \sigma$ . (It is analytic because of (4.58)) Then  $\frac{\partial g}{\partial x} - i \frac{\partial g}{\partial y} \equiv 0$  in  $B(x_0, \delta) \Rightarrow g \equiv 0$ .

So  $u_0(z) = u_0(\bar{z})$ ,  $\forall z \in B(x_0, \delta) \Rightarrow f(z) = u_0(z) + iv(z)$  is analytic in  $B(x_0, \delta)$  and  $f(z) = \overline{f(\bar{z})}$  for  $\forall z \in B(x_0, \delta)$ .

□

**Remark 4.80.** The reflection principle can be applied to any circles with symmetric points by using Möbius transformation. However, the condition of  $f(\mathbb{R}) \subset \mathbb{R}$  (i.e.  $v(\mathbb{R}) = 0$ ) transforms to  $f(C) \subset C$ .

## 5 Series and Product Representations

### 5.1 Power Series Expansions

#### 5.1.1 Weierstrass's Theorem

**Theorem 5.1** (Weierstrass's Theorem). *Suppose  $f_n$  is analytic in the region  $\Omega_n$  for each  $n \in \mathbb{N}$ , and  $\Omega_1 \subset \Omega_2 \subset \cdots \subset \Omega_n \subset \cdots$  and  $\bigcup_{n \in \mathbb{N}} \Omega_n = \Omega$ . If  $f_n$  converges to  $f$  in  $\Omega$ , uniformly on every compact subset of  $\Omega$ , then  $f$  is analytic in  $\Omega$ .*

*Moreover,  $f'_n$  converges uniformly to  $f'$  on every compact subset of  $\Omega$ .*

*Proof.*  $\forall$  compact subset  $K \subset \Omega$ ,  $K \subset \bigcup_{n=1}^{\infty} \Omega_n \Rightarrow \exists N \in \mathbb{N}$  such that  $K \subset \bigcup_{n=1}^N \Omega_n$ .

$\forall z_0 \in \Omega$ ,  $\exists R > 0$  s.t.  $\overline{B(z_0, R)} \subset \Omega$ . Choose  $N \in \mathbb{N}$  s.t.  $\overline{B(z_0, R)} \subset \Omega_n$  for  $\forall n \geq N$ .

Cauchy's integral formula 4.52 implies

$$f_n(z) = \frac{1}{2\pi i} \int_{\partial B(z_0, R)} \frac{f_n(\zeta)}{\zeta - z} d\zeta, \quad \forall z \in B(z_0, R) \quad (5.1)$$

$f_n \Rightarrow f$  uniformly on  $\overline{B(z_0, R)} \Rightarrow$

$$f(z) = \frac{1}{2\pi i} \int_{\partial B(z_0, R)} \frac{f(\zeta)}{\zeta - z} d\zeta \quad (5.2)$$

Then  $f$  is analytic in  $B(z_0, R)$  by lemma 4.19.

$$\begin{cases} f'_n(z) = \frac{1}{2\pi i} \int_{\partial B(z_0, R)} \frac{f_n(\zeta)}{(\zeta - z)^2} d\zeta & \forall z \in B(z_0, R) \\ f'(z) = \frac{1}{2\pi i} \int_{\partial B(z_0, R)} \frac{f(\zeta)}{(\zeta - z)^2} d\zeta & \forall z \in B(z_0, R) \end{cases} \quad (5.3)$$

Then  $|f'_n(z) - f'(z)| \leq \frac{1}{2\pi} \int_{\partial B(z_0, R)} \frac{|f_n(\zeta) - f(\zeta)|}{|\zeta - z|^2} |d\zeta|$ . Therefore,  $f'_n$  uniformly con-

verges to  $f'$  in  $B(z_0, \rho)$  for  $0 < \rho < R$ .

Since any compact subset of  $\Omega$  can be covered by a finite number of such closed disks,  $f_n \Rightarrow f$  uniformly on every compact subset of  $\Omega$ .  $\square$

**Corollary 5.2.** *If  $f_n$  is analytic in a region  $\Omega$  for  $n \in \mathbb{N}$ , and  $\sum_{j=1}^n f_j \Rightarrow f$  on every compact subset of  $\Omega$ , then  $f$  is analytic in  $\Omega$  and  $f'(z) = \sum_{j=1}^{\infty} f'_j(z)$ ,  $\forall z \in \Omega$  uniformly on every compact subset of  $\Omega$ .*

**Theorem 5.3** (Hurwitz's Theorem). *If the functions  $f_n$  are analytic and nowhere zero in a region  $\Omega$ , and if  $f_n \Rightarrow f$  on every compact subset of  $\Omega$ , then  $f$  is either identically zero or never equal to 0 in  $\Omega$ .*

*Proof.* Suppose  $f \neq 0$ . The zeros of  $f$  are isolated.

$\forall z_0 \in \Omega, \exists \delta > 0$  s.t.  $f(z) \neq 0, \forall z \in B(z_0, \delta) \setminus \{z_0\} \subset \Omega$ .

Then  $|f|$  has a positive minimum on  $\partial B(z_0, \delta)$ . Thus,  $\frac{1}{f_n} \Rightarrow \frac{1}{f}$  on  $\partial B(z_0, \delta)$ .

Combined with  $f'_n \Rightarrow f'$  on  $\partial B(z_0, \delta) \Rightarrow$

$$\lim_{n \rightarrow \infty} \frac{1}{2\pi i} \int_{\partial B(z_0, \delta)} \frac{f'_n(z)}{f_n(z)} dz = \frac{1}{2\pi i} \int_{\partial B(z_0, \delta)} \frac{f'(z)}{f(z)} dz \quad (5.4)$$

By argument principle 4.38, this equation equals to 0. So  $f$  has no zeros on  $\partial B(z_0, \delta)$ , so is on  $\Omega$ .  $\square$

### 5.1.2 The Taylor Series

**Theorem 5.4.** *If  $f$  is analytic in the region  $\Omega$ , and  $z_0 \in \Omega$ , then the expression*

$$f(z) = \sum_{n=0}^{\infty} \frac{f^{(n)}(z_0)}{n!} (z - z_0)^n \quad (5.5)$$

*is valid in the largest open disk of  $z_0$  contained in  $\Omega$ .*

*Proof.* Taylor's theorem 4.26 implies

$$f(z) = f(z_0) + f'(z_0)(z - z_0) + \cdots + \frac{f^{(n)}(z_0)}{n!}(z - z_0)^n + f_{n+1}(z)(z - z_0)^{n+1}, \quad (5.6)$$

for  $\forall z \in B(z_0, R) \subset \overline{B(z_0, R)} \subset \Omega$ , where

$$f_{n+1}(z) = \frac{1}{2\pi i} \int_{\partial B(z_0, R)} \frac{f(\zeta)}{(\zeta - z)^{n+1}(\zeta - z_0)} d\zeta \quad (5.7)$$

Let  $M := \max_{z \in \partial B(z_0, R)} |f(z)|$ . Then  $|f_{n+1}(z)(z - z_0)^{n+1}| < \frac{M}{R^n(R - |z - z_0|)} \cdot |z - z_0|^{n+1} \Rightarrow 0$  in every disk  $|z - z_0| \leq \rho < R$ , from which we derive this theorem.  $\square$

Some known Taylor series:

$$\begin{aligned} e^z &= 1 + z + \frac{z^2}{2!} + \cdots + \frac{z^n}{n!} + \cdots, \quad z \in \mathbb{C} \\ \cos z &= 1 - \frac{z^2}{2!} + \frac{z^4}{4!} - \cdots + \frac{(-1)^n z^{2n}}{(2n)!} + \cdots, \quad z \in \mathbb{C} \\ \sin z &= z - \frac{z^3}{3!} + \frac{z^5}{5!} - \cdots + \frac{(-1)^n z^{2n+1}}{(2n+1)!} + \cdots, \quad z \in \mathbb{C} \\ \ln(1+z) &= z - \frac{z^2}{2} + \frac{z^3}{3} - \cdots + (-1)^{n+1} \frac{z^n}{n} + \cdots, \quad \forall |z| < 1 \\ \forall \mu \in \mathbb{R} \setminus \mathbb{Z}_{\geq 0}, (1+z)^\mu &= 1 + \mu z + \binom{\mu}{2} z^2 + \cdots + \binom{\mu}{n} z^n + \cdots, \quad \forall |z| < 1 \end{aligned} \quad (5.8)$$

where  $\binom{\mu}{n} = \frac{\mu(\mu-1)\cdots(\mu-n+1)}{n!}$ , and pick the branch with  $\ln 1 = 0$ .

### 5.1.3 Laurent Series

**Lemma 5.5.** Let  $A := \{z \in \mathbb{C} : R_1 < |z - a| < R_2\}$  be an annulus. For each analytic function  $f : A \rightarrow \mathbb{C}$ , there are analytic functions  $f_1 : \{z \in \mathbb{C} : |z - a| < R_2\} \rightarrow \mathbb{C}$ ,  $f_2 : \{z \in \mathbb{C} : |z - a| > R_1\} \rightarrow \mathbb{C}$  s.t.  $f(z) = f_1(z) + f_2(z)$ ,  $\forall z \in A$

*Proof.* For  $\forall z \in A$ ,  $f_1(z) = \frac{1}{2\pi i} \int_{|\zeta - a| = r_1} \frac{f(\zeta)}{\zeta - z} d\zeta$ ,  $r_1 \in (|z - a|, R_2)$ .

Cauchy's theorem 4.52 implies the integral is independent of the choice of  $r_1$ .

If we fix such  $r$ , then  $f_1(z)$  is analytic for  $\forall |z - a| < r_1$ .  $\xrightarrow{r_1 \rightarrow R_2}$   $f_1(z)$  is well-defined and analytic on  $B(a, R_2)$ .

Let

$$f_2(z) = -\frac{1}{2\pi i} \int_{|\zeta-a|=r_2} \frac{f(\zeta)}{\zeta-z} d\zeta, \quad r_2 \in (R_1, |z-a|) \quad (5.9)$$

Then  $f_2$  is well-defined and analytic in  $\{z \in \mathbb{C} : |z-a| > R_1\}$ .

Denote  $\gamma_1 = \{z : |z-a| = r_1\}$ ,  $\gamma_2 = \{z : |z-a| = r_2\}$ ,  $R_1 < r_2 < |z-a| < r_1 < R_1$ .

Cauchy's integral formula 4.39 implies

$$f(z) = n(\gamma_1 - \gamma_2, z)f(z) = \frac{1}{2\pi i} \int_{\gamma_1 - \gamma_2} \frac{f(\zeta)}{\zeta-z} d\zeta = f_1(z) + f_2(z), \quad \forall z \in A \quad (5.10)$$

□

**Theorem 5.6** (Laurent Theorem). *Any analytic function  $f$  on  $A = \{z \in \mathbb{C} : R_1 < |z-a| < R_2\}$  has a power series of the form*

$$f(z) = \sum_{n=-\infty}^{\infty} c_n(z-a)^n \quad (5.11)$$

*This series, called **Laurent series**, converges uniformly on each compact subset of  $A$ .*

*Moreover,*

$$c_n = \frac{1}{2\pi i} \int_{|\zeta-a|=r} \frac{f(\zeta)}{(\zeta-a)^{n+1}} d\zeta, \quad \forall n \in \mathbb{Z}, \forall r \in (R_1, R_2) \quad (5.12)$$

*Proof.* The previous lemma implies  $f(z) = f_1(z) + f_2(z)$ ,  $\forall z \in A$ , where  $f_1$  is analytic in  $|z-a| < R_2$  and  $f_2$  is analytic in  $|z-a| > R_1$ . Then Taylor series for  $f_1$  is

$$f_1(z) = \sum_{n=0}^{\infty} a_n(z-a)^n \quad (5.13)$$

which converges uniformly on each compact subset of  $|z-a| < R_2$ .

Let  $g(z) = f_2(a + \frac{1}{z})$ ,  $|z| < \frac{1}{R_1}$ . (5.9) tells us  $\lim_{z \rightarrow \infty} f_2(z) = 0$ . Then  $\lim_{z \rightarrow 0} g(z) = 0 \Rightarrow g$  can be viewed as an analytic function in  $B(0, \frac{1}{R_1})$ .

The Taylor's series for  $g$  is  $g(z) = \sum_{n=1}^{\infty} b_n z^n$ , which converges uniformly on each compact subset of  $B(0, \frac{1}{R_1})$ . Now let  $\zeta = a + \frac{1}{z}$ . Then

$$f_2(\zeta) = g(z) = g\left(\frac{1}{\zeta - a}\right) = \sum_{n=1}^{\infty} b_n (\zeta - a)^n \quad (5.14)$$

which converges uniformly on each compact subset  $|z - a| > R_1$ .

$$f(z) = \sum_{n=-\infty}^{\infty} c_n (z - a)^n \quad (5.15)$$

which converges uniformly on each compact subset of  $A$ . Then

$$\frac{1}{2\pi i} \int_{|z-a|=r} \frac{f(z)}{(z-a)^{n+1}} dz = \frac{1}{2\pi i} \sum_{k=-\infty}^{\infty} c_k \sum_{|z-a|=r} (z-a)^{k-(n+1)} dz, \forall z \in (R_1, R_2) \quad (5.16)$$

where  $\int_{|z-a|=r} (z-a)^{k-(n+1)} dz \neq 0$  iff  $k = n$ . So

$$c_n = \frac{1}{2\pi i} \int_{|\zeta-a|=r} \frac{f(\zeta)}{(\zeta-a)^{n+1}} d\zeta, \forall n \in \mathbb{Z}, \forall r \in (R_1, R_2) \quad (5.17)$$

□

**Theorem 5.7.** Let  $f$  be analytic in  $\Omega \setminus \{a\}$ , where  $\Omega$  is a region and  $a$  is an isolated singularity. Its Laurent series is given by  $f(z) = \sum_{n=-\infty}^{\infty} c_n (z-a)^n$ ,  $\forall z \in B(a, R) \setminus \{a\} \subset \Omega \setminus \{a\}$ . Then

(a)  $f$  has a removable singularity at  $a$  iff  $c_n = 0$  for  $n < 0$

(b)  $f$  has a pole of order  $N$  at  $a$  iff  $c_n = 0$  for  $n < -N$  and  $c_{-N} \neq 0$ .

(c)  $f$  has an essential singularity at  $a$  iff  $c_n \neq 0$  for infinitely many negative  $n$ .

*Proof.* (a) and (b) can be derived from the explicit expression of  $f_1, f_2$ .

For (c), " $\Rightarrow$ " follows from (b) and (a).

" $\Leftarrow$ " follows from the fact that isolated singularities belong to one of three categories: removable singularities, poles, and essential singularities, *i.e.* theorem 4.33. □

## 5.2 Partial Fractions and Factorization

### 5.2.1 Partial fractions

**Theorem 5.8** (Mittag-Leffler Theorem). *Let  $\{\zeta_k : k \in \mathbb{N}\}$  be a sequence in  $\mathbb{C}$ ,  $\lim_{k \rightarrow \infty} \zeta_k = \infty$ , and let  $P_k$  be polynomials without constant term. Then there are functions which are meromorphic in  $\mathbb{C}$  with poles at just the points  $\zeta_k$  and the corresponding singular part  $P_k \left( \frac{1}{z - \zeta_k} \right)$ . Moreover, the most general meromorphic function of this kind can be written as*

$$f(z) = \sum_k \left[ P_k \left( \frac{1}{z - \zeta_k} \right) - p_k(z) \right] + g(z) \quad (5.18)$$

where  $p_k$  are polynomials and  $g$  is entire.

*Proof.* WLOG, we assume  $\zeta_k \neq 0$  for each  $k$ . Consider the Taylor expansion for  $P_k \left( \frac{1}{z - \zeta_k} \right)$  around  $z = 0$ :

$$\Psi(z) = P_k \left( \frac{1}{z - \zeta_k} \right) = \Psi(0) + \Psi'(0)z + \frac{\Psi''(0)}{2!}z^2 + \cdots + \frac{\Psi^{(N_k)}(0)}{N_k!}z^{N_k} + \Psi_{N_k+1}z^{N_k+1} \quad (5.19)$$

where  $N_k$  is to be specified later, and

$$\Psi_{N_k+1}(z) = \frac{1}{2\pi i} \int_C \frac{\Psi(\zeta)}{\zeta^{N_k+1}(\zeta - z)} d\zeta \quad (5.20)$$



where  $C$  is the circle centered at 0 with radius  $\frac{|\zeta_k|}{2}$ . Let  $M_k : \max_{z \in C} |\Psi(z)|$ . Then

$$|\Psi_{N_k+1}(z)| \leq \frac{1}{2\pi} \frac{M_k}{\left(\frac{|\zeta_k|}{2}\right)^{N_k+1} \cdot \frac{|\zeta_k|}{4}} \cdot 2\pi \cdot \frac{|\zeta_k|}{4} = 2M_k \left(\frac{2}{|\zeta_k|}\right)^{N_k+1}, \forall z \text{ with } |z| \leq \frac{|\zeta_k|}{4} \quad (5.21)$$

Let  $p_k$  be the partial sum of  $\Psi$  up to  $z^{N_k}$ . i.e.  $p_k = \Psi(0) + \Psi'(0)z + \frac{\Psi''(0)}{2!}z^2 + \dots + \frac{\Psi^{(N_k)}(0)}{N_k!}z^{N_k}$ . Then

$$|\Psi(z) - p_k(z)| \leq 2M_k \left(\frac{2|z|}{|\zeta_k|}\right)^{N_k+1}, \forall z \text{ with } |z| \leq \frac{|\zeta_k|}{4} \quad (5.22)$$

Pick  $N_k$  large enough s.t.  $M_k \cdot 2^k \leq 2^{N_k}$ . Then

$$|\Psi(z) - p_k(z)| \leq 2^{-k} \Rightarrow |P_k\left(\frac{1}{z - \zeta_k}\right) - p_k(z)| \leq 2^{-k}, \forall z \text{ with } |z| \leq \frac{|\zeta_k|}{4} \quad (5.23)$$

Note that

$$\sum_k \left[ P_k\left(\frac{1}{z - \zeta_k}\right) - p_k(z) \right] = \sum_{|\frac{\zeta_k}{4}| \leq R} \left[ P_k\left(\frac{1}{z - \zeta_k}\right) - p_k(z) \right] + \sum_{|\frac{\zeta_k}{4}| > R} \left[ P_k\left(\frac{1}{z - \zeta_k}\right) - p_k(z) \right]$$

where the first part is a finite sum and has  $P_k\left(\frac{1}{z - \zeta_k}\right)$  as the singular part at the pole  $\zeta_k$ , and the second part is analytic in  $z \in \overline{B(0, R)}$  by Weierstrass's theorem 4.36 and (5.23)

Therefore,  $h(z) = \sum_k \left[ P_k\left(\frac{1}{z - \zeta_k}\right) - p_k(z) \right]$  is the desired meromorphic function.

For the second part, if  $f$  is meromorphic in  $\mathbb{C}$  with the some poles  $\zeta_k$  and singular parts as  $h$ , then  $g = f - h$  is analytic in  $\mathbb{C}$ . □

**Remark 5.9.** We have given  $p_k$  as the partial sum of  $P_k\left(\frac{1}{z - \zeta_k}\right)$  up to some  $N_k$

**Example 5.10.** Prove that

$$\frac{\pi^2}{\sin^2(\pi z)} = \sum_{n=-\infty}^{\infty} \frac{1}{(z-n)^2} \quad (5.24)$$

*Proof.* The singular part of  $\frac{\pi^2}{\sin^2(\pi z)}$  at the pole  $z = 0$  is  $\frac{1}{z^2} \Rightarrow$  The singular part of  $\frac{\pi^2}{\sin^2(\pi z)}$  at  $z = n \in \mathbb{Z}$  is  $\frac{1}{(z-n)^2}$ . We know  $\sum_{n=-\infty}^{\infty} \frac{1}{(z-n)^2}$  converges uniformly on each compact set in  $\mathbb{C}$  if we omit the terms which become infinite ( i.e.  $p_k = 0$  in the previous theorem)

The Mittag-Leffler Theorem 5.8 implies  $\frac{\pi^2}{\sin^2(\pi z)} = \sum_{n=-\infty}^{\infty} \frac{1}{(z-n)^2} + g(z)$  where  $g$  is analytic in  $\mathbb{C}$ .

It is easy to see that  $g$  has period 1 and  $\lim_{|y| \rightarrow \infty} g(x + iy) = 0$  uniformly in  $x \in \mathbb{R}$ .

Then  $|g(z)|$  is bounded in  $\{z \in \mathbb{C} : 0 \leq \operatorname{Re} z \leq 1\} \Rightarrow |g(z)|$  is bounded in  $\mathbb{C}$  by its periodicity.

Then Liouville's theorem 4.22 implies  $g$  is a constant, hence of 0 since  $\lim_{y \rightarrow \infty} g(x + iy) = 0$ . □

Similarly, one can prove

$$\pi \cot(\pi z) = \frac{1}{z} + \sum_{n \neq 0} \frac{1}{z-n} + \frac{1}{n} = \frac{1}{z} + \sum_{n=1}^{\infty} \frac{2z}{z^2 - n^2}, \quad z \in \mathbb{C} \quad (5.25)$$

From (5.24) and (5.25), one can derive

$$\frac{\pi}{\sin(\pi z)} = \lim_{m \rightarrow \infty} \sum_{n=-m}^m \frac{(-1)^n}{z-n}, \quad z \in \mathbb{C} \quad (5.26)$$

## 5.2.2 Infinite Products

An **infinite product** of complex numbers  $\prod_{n=1}^{\infty} a_n$  converges if and only if at most a finite number of the factors are zero, and if the partial products formed by the non-vanishing factors tend to a finite limit which is different from zero.

**Remark 5.11.**  $\prod_{n=1}^{\infty} a_n$  converges  $\Rightarrow a_n = \frac{\prod_{j=1}^n a_j}{\prod_{j=1}^{n-1} a_j} \rightarrow 1$  as  $n \rightarrow \infty$  (if the zero factors are omitted)

**Theorem 5.12.** The infinite product  $\prod_{n=1}^{\infty} (1 + a_n)$  with  $1 + a_n \neq 0$  converges if and only if  $\sum_{n=1}^{\infty} \text{Ln}(1 + a_n)$  converges, where  $\text{Ln}$  is the principal branch of the logarithm.

*Proof.* " $\Leftarrow$ ": Let  $S_n = \sum_{k=1}^n \text{Ln}(1 + a_k)$ . Then  $P_n = \prod_{k=1}^n (1 + a_k) = e^{S_n}$ .

So  $s_n \rightarrow s$  as  $n \rightarrow \infty \Rightarrow P_n \rightarrow P = e^s \neq 0$  as  $n \rightarrow \infty$

" $\Rightarrow$ " Suppose  $P_n \rightarrow P \neq 0$  as  $n \rightarrow \infty$ .

There exists  $M_n \in \mathbb{Z}$  s.t.  $\text{Ln}\left(\frac{P_n}{P}\right) = S_n - \text{Ln}P + 2\pi i \cdot M_n, n \in \mathbb{N}$ .

Then  $2\pi(M_{n+1} - M_n) = \arg\left(\frac{P_{n+1}}{P}\right) - \arg\left(\frac{P_n}{P}\right) - \arg(1 + a_{n+1})$ . From  $\lim_{k \rightarrow \infty} \frac{P_n}{P} = 1$  we can derive  $\arg\left(\frac{P_{n+1}}{P}\right) - \arg\left(\frac{P_n}{P}\right) \rightarrow 0$  as  $n \rightarrow \infty$ .

$|\arg(1 + a_{n+1})| \leq \pi \Rightarrow M_{n+1} - M_n = 0$  for  $n$  large enough. So  $M_n = M \in \mathbb{Z}$  for all large  $n$ .

Then  $\text{Ln}\left(\frac{P_n}{P}\right) = S_n - \text{Ln}P + 2\pi i \cdot M, n \in \mathbb{N} \Rightarrow S_n \rightarrow \text{Ln}P - 2\pi i \cdot M$  as  $n \rightarrow \infty$   $\square$

The infinite product  $\prod_{n=1}^{\infty} (1 + a_n)$  is said to be **absolutely convergent** if the infinite sum  $\sum_{n=1}^{\infty} \text{Ln}(1 + a_n)$  is absolutely convergent.

**Theorem 5.13.** The product  $\prod_{n=1}^{\infty} (1 + a_n)$  is absolutely convergent iff  $\sum_{n=1}^{\infty} |a_n|$  converges.

*Proof.* Convergence of either  $\sum_{n=1}^{\infty} \text{Ln}(1 + a_n)$  or  $\sum_{n=1}^{\infty} |a_n|$  implies  $a_n \rightarrow 0$  as  $n \rightarrow \infty$ .  
 $\lim_{z \rightarrow 0} \frac{\text{Ln}(1 + z)}{z} = 1 \Rightarrow \frac{1}{2}|a_n| < |\text{Ln}(1 + a_n)| < \frac{3}{2}|a_n|$  for all large  $n$ .  $\square$

### 5.2.3 Canonical Products

If  $g$  is an entire function, then  $f(z) = e^{g(z)}$  is entire and everywhere nonzero. Conversely, if  $f$  is any entire function which is never zero, then  $g(z) = \ln f(z)$  is well-defined. So  $f(z) = e^{g(z)}$  where  $g$  is entire.

This result gives a way to construct the most general function with a finite number of zeros. Assume  $f$  has a zero of order  $m$  at the origin, and  $N$  zeros  $a_1, \dots, a_N$  away from the origin. (multiple zeros being repeated) Then

$$f(z) = z^m e^{g(z)} \prod_{n=1}^N \left(1 - \frac{z}{a_n}\right) \quad (5.27)$$

where  $g$  is entire.

If there are infinitely many zeros, an obvious generalization is

$$f(z) = z^m e^{g(z)} \prod_{n=1}^{\infty} \left(1 - \frac{z}{a_n}\right) \quad (5.28)$$

Theorem 5.13 implies  $\prod_{n=1}^{\infty} \left(1 - \frac{z}{a_n}\right)$  converges absolutely iff  $\sum_{n=1}^{\infty} \frac{1}{|a_n|}$  converges. And in this case, the convergence is also uniform in  $\{z : |z| \leq R\}$  for  $\forall R > 0$ .

**Theorem 5.14** (Weierstrass factorization theorem). *There exists an entire function with arbitrary prescribed zeros  $(a_n)_{n \in \mathbb{N}}$  as long as  $a_n \rightarrow \infty$  if the number of zeros is infinite. Moreover, every entire function with these and no other zeros can be written as*

$$f(z) = z^m e^{g(z)} \prod_{n=1}^{\infty} \left(1 - \frac{z}{a_n}\right) \exp \left[ \frac{z}{a_n} + \frac{1}{2} \left(\frac{z}{a_n}\right)^2 + \dots + \frac{1}{N_n} \left(\frac{z}{a_n}\right)^{N_n} \right] \quad (5.29)$$

where the product is taken over all  $a_0 \neq 0$ ,  $N_n \in \mathbb{N} \cup \{0\}$ , and  $g$  is entire.

*Proof.* We already proved the case when the number of zeros is finite in (5.27). So we consider a sequence of complex numbers  $a_n \neq 0$  with  $\lim_{n \rightarrow \infty} a_n = \infty$ . We need to prove that  $\exists$  polynomials  $p_n(z)$  s.t.  $\prod_{n=1}^{\infty} (1 - \frac{z}{a_n} e^{p_n(z)})$  converges to an entire function. By theorem 5.12, this is equivalent to the uniform convergence of

$$\sum_{n=1}^{\infty} [\ln(1 - \frac{z}{a_n}) + p_n(z)] \quad (5.30)$$

where the branch of the logarithm shall be chosen s.t.  $r_n(z) = \ln(1 - \frac{z}{a_n}) + p_n(z)$  has imaginary part in  $(-\pi, \pi]$ .

For given  $R > 0$ , we only need to consider the terms with  $|a_n| > R$ .

The Taylor series gives

$$\text{Ln}(1 - \frac{z}{a_n}) = - \left[ \frac{z}{a_n} + \frac{1}{2} \left( \frac{z}{a_n} \right)^2 + \dots \right], |z| \leq R \quad (5.31)$$

We define  $p_n(z) = \frac{z}{a_n} + \frac{1}{2} \left( \frac{z}{a_n} \right)^2 + \dots + \frac{1}{N_n} \left( \frac{z}{a_n} \right)^{N_n}$ , where  $N_n \in \mathbb{N} \cup \{0\}$  is to be specified later.

Then

$$r_n(z) = - \left[ \frac{1}{N_n + 1} \left( \frac{z}{a_n} \right)^{N_n+1} + \frac{1}{N_n + 2} \left( \frac{z}{a_n} \right)^{N_n+2} + \dots \right] + 2k_n\pi, |z| \leq R, k_n \in \mathbb{Z}$$

And thus

$$\begin{aligned} |r_n(z)| &\leq \frac{1}{N_n + 1} \left( \frac{z}{|a_n|} \right)^{N_n+1} \cdot \left[ 1 + \frac{R}{|a_n|} + \left( \frac{R}{|a_n|} \right)^2 + \dots \right] \\ &= \frac{1}{N_n + 1} \left( \frac{R}{|a_n|} \right)^{N_n+1} \left( 1 - \frac{R}{|a_n|} \right)^{-1}, |z| \leq R \end{aligned}$$

If we choose  $N_n = n$ , then  $r_n(z) \rightarrow 0$  as  $n \rightarrow \infty$ . Then  $\text{Im}(r_n(z)) \in (-\pi, \pi]$  for all large  $n$ . So  $k_n = 0$  for enough large  $n$ . Moreover,  $\sum r_n(z)$  is absolutely and uniformly convergent for  $|z| \leq R$ .

So  $\prod_{n=1}^{\infty} (1 - \frac{z}{a_n}) e^{p_n(z)}$  is analytic in  $B(0, R)$  for  $\forall R > 0$ . □

**Corollary 5.15.** *Every function which is meromorphic in  $\mathbb{C}$  is the quotient of two entire functions.*

*Proof.* If  $F$  is meromorphic in  $\mathbb{C}$ , the theorem 5.14 implies that we can construct an entire function  $g$  whose zeros are the poles of  $F$ . Then  $f(z) = F(z)g(z)$ . So  $F(z) = \frac{f(z)}{g(z)}$  □

The proof of the Weierstrass factorization theorem 5.14 tells us

$$\prod_{n=1}^{\infty} (1 - \frac{z}{a_n}) \exp \left[ \frac{z}{a_n} + \frac{1}{2} \left( \frac{z}{a_n} \right)^2 + \cdots + \frac{1}{h} \left( \frac{z}{a_n} \right)^h \right] \quad (5.32)$$

converges and represents an entire function is

$$\frac{1}{n+1} \sum_{n=1}^{\infty} \left( \frac{R}{|a_n|} \right)^{h+1} \quad (5.33)$$

converges for all  $R > 0 \Leftrightarrow \sum_{n=1}^{\infty} \frac{1}{|a_n|^{h+1}}$  converges.

Suppose  $h$  is the smallest integer for which  $\sum_{n=1}^{\infty} \frac{1}{|a_n|^{h+1}}$  converges. For this  $h$ , (5.32) is called the **canonical product** associated with the sequence  $\{a_n\}$ , and  $h$  is the **genus** of the canonical product.

If  $f$  has a Weierstrass factorization for which the infinite product is a canonical product, and if in this representation  $g$  reduces to a polynomial, then  $f$  is said to be of **finite genus**. The **genus** of  $f$  is then defined to be

$$\max\{\text{degree of } g, \text{ genus of the canonical product}\}$$

**Example 5.16.** An entire function of genus zero is of the form

$$f(z) = Cz^m \prod_{n=1}^{\infty} \left(1 - \frac{z}{a_n}\right) \quad (5.34)$$

with  $C \in \mathbb{C} \setminus \{0\}$ , and  $\sum_{n=1}^{\infty} \frac{1}{|a_n|} < \infty$ .

**Example 5.17.** The canonical representation of an entire function of genus one is either of form

$$f(z) = Cz^m e^{\alpha z} \prod_{n=1}^{\infty} \left(1 - \frac{z}{a_n}\right) \exp \left[ \frac{z}{a_n} \right] \quad (5.35)$$

with  $C \in \mathbb{C} \setminus \{0\}$ ,  $\sum \frac{1}{|a_n|} = \infty$ ,  $\sum_{n=1}^{\infty} \frac{1}{|a_n|^2} < \infty$ ,  
or of the form

$$f(z) = Cz^m e^{\alpha z} \prod_{n=1}^{\infty} \left(1 - \frac{z}{a_n}\right) \quad (5.36)$$

with  $C \in \mathbb{C} \setminus \{0\}$ ,  $\alpha \neq 0$ ,  $\sum \frac{1}{|a_n|} < \infty$ .

**Example 5.18.** Prove that  $\sin(\pi z) = \pi z \prod_{n=1}^{\infty} \left(1 - \frac{z^2}{n^2}\right)$ ,  $\forall z \in \mathbb{C} \setminus \mathbb{Z}$ .

*Proof.* The zeros of  $\sin(\pi z)$  are  $z = n$ ,  $n \in \mathbb{Z}$ . The genus of the canonical product associated with  $\{n\}_{n \in \mathbb{Z}_+}$  is one.

So by Weierstrass factorization theorem 5.14, we must take  $h = 1$ , and

$$\sin(\pi z) = ze^{g(z)} \prod_{n \neq 0} \left(1 - \frac{z}{n}\right) e^{\frac{z}{n}} \quad (5.37)$$

Taking logarithmic derivatives on both sides, we get

$$\pi \cot(\pi z) = \frac{1}{z} + g'(z) + \sum_{n \neq 0} \left( \frac{1}{z - n} + \frac{1}{n} \right) \quad (5.38)$$

uniformly converges on compact sets in  $\mathbb{C} \setminus \mathbb{Z}$ .

Comparing with the expression for  $\pi \cot(\pi z)$  in (5.25), we obtain  $g'(z) \equiv 0$  and since  $\lim_{z \rightarrow 0} \frac{\sin(\pi z)}{z} = \pi$ , we have

$$\sin \pi z = \pi z \prod_{n \neq 0} \left(1 - \frac{z}{n}\right) e^{\frac{z}{n}} = \pi z \prod_{n=1}^{\infty} \left(1 - \frac{z^2}{n^2}\right)$$

Here we use the absolute convergence and uniform convergence of the product. □

### 5.2.4 The Gamma Function

$$\Gamma(z) = \int_0^{\infty} t^{z-1} e^{-t} dt, \operatorname{Re} z > 0 \quad (5.39)$$

Let  $f_n(z) = \int_0^n t^{z-1} e^{-t} dt$ . Then  $f_n(z)$  is analytic in  $\operatorname{Re} z > 0$  and

$$|f_n(z) - \Gamma(z)| = \left| \int_n^{\infty} t^{z-1} e^{-t} dt \right| \leq \int_n^{\infty} t^{\operatorname{Re} z - 1} e^{-t} dt \quad (5.40)$$

which converges uniformly in  $\{z \in \mathbb{C} : \delta \leq \operatorname{Re} z \leq M\}$  for  $\forall \delta > 0, M > 0$ . By Weierstrass' theorem 5.1,  $\Gamma$  is analytic in  $\{z : \operatorname{Re} z > 0\}$ .

**Proposition 5.19.** *Here are some properties of the Gamma function:*

- (a)  $\Gamma(z+1) = z\Gamma(z)$ ,  $\forall z \in \mathbb{C} \setminus \{0, -1, \dots\}$ . In particular,  $\Gamma(n+1) = n!$ ,  $\forall n \in \mathbb{N}$ .
- (b)  $\Gamma$  extends to a meromorphic function on  $\mathbb{C}$  with simple poles at  $z = 0, -1, -2, \dots$ ,
- (c)  $\frac{1}{\Gamma(z)} = ze^{\gamma z} \prod_{n=1}^{\infty} \left(1 + \frac{z}{n}\right) e^{-\frac{z}{n}}$ ,  $z \in \mathbb{C}$ , where  $\gamma = \lim_{n \rightarrow \infty} \sum_{k=1}^n \frac{1}{k} - \ln n$  is the Euler's constant
- (d)  $\Gamma(z) = \lim_{n \rightarrow \infty} \frac{n! n^z}{z(z+1) \cdots (z+n)}$ ,  $\forall z \in \mathbb{C} \setminus \{0, -1, -2, \dots\}$ .



(e)  $\Gamma$  has no zeros,  $\frac{1}{\Gamma}$  is entire.

$$(f) \Gamma(z)\Gamma(1-z) = \frac{\pi}{\sin(\pi z)}, \forall z \in \mathbb{C} \setminus \mathbb{Z}$$

*Proof.*

(a) Integration by parts  $\Rightarrow \Gamma(z+1) = z\Gamma(z)$ ,  $\text{Re}z > 0$ .

(b) We use  $\Gamma(z+1) = z\Gamma(z)$  to analytically continue  $\Gamma$  to meromorphic function on  $\mathbb{C}$ . Then

$$\Gamma_1(z) = \frac{\Gamma(z+1)}{z} \quad (5.41)$$

is analytic on  $\{z \in \mathbb{C} : \text{Re}z > -1\} \setminus \{0\}$  s.t.  $\Gamma_1(z) = \Gamma(z)$  for  $\text{Re}z > 0$ .

$z = 0$  is a simple pole of  $\Gamma_1$  with  $\text{Res}_{z>0}\Gamma_1(z) = \Gamma(1) = 1$ .

By induction, if we have  $\Gamma_{n-1}$  as the analytic continuous of  $\Gamma$  to  $\text{Re}z > 1-n$ ,  $z \neq -n+2, -n+3, \dots, 0$ , then we define

$$\Gamma_n(z) = \frac{\Gamma_{n-1}(z+1)}{z} = \frac{\Gamma(z+n)}{z(z+1)\cdots(z+n-1)} \quad (5.42)$$

which is meromorphic for  $\text{Re}z > -n$ . with poles  $z = -n+1, -n+2, \dots, 0$  and  $\text{Res}_{z=-n+1}\Gamma_n(z) = \frac{(-1)^{n-1}}{(n+1)!}$ .

(c,d,e) We know that  $\lim_{n \rightarrow \infty} (1 - \frac{t}{n})^n t^{z-1} = e^{-t} t^{z-1}$ , and  $(1 - \frac{t}{n})^n \leq e^{-t}$  for  $1 \leq t \leq n$ .

Then dominated convergence theorem implies

$$\lim_{n \rightarrow \infty} \int_0^n (1 - \frac{t}{n})^n t^{z-1} dt = \int_0^\infty e^{-t} t^{z-1} dt = \Gamma(z), \forall \text{Re}z > 0$$

*Claim.*

$$\int_0^n (1 - \frac{t}{n})^n t^{z-1} dt = \frac{n! n^z}{z(z+1)\cdots(z+n)}, \text{Re}z > 0 \quad (5.43)$$

*Proof.* Indeed, for  $n = 1$ ,  $\int_0^1 (1-t)t^{z-1}dt = \frac{1}{z} - \frac{1}{z+1}$ . □

Suppose (5.43) holds for  $n - 1$ . Then

$$\begin{aligned}
 \int_0^n \left(1 - \frac{t}{n}\right)^n t^{z-1} dt &\stackrel{s=\frac{t}{n}}{=} n^z \int_0^1 (1-s)^n s^{z-1} ds \\
 &= \frac{n^z}{z} \left[ (1-s)^n s^z \Big|_0^1 + n \int_0^1 (1-s)^{n-1} s^z ds \right] \\
 &= \frac{n^{z+1}}{z} \int_0^1 (1-s)^{n-1} s^z ds \\
 &= \frac{n^{z+1}}{z} \cdots \frac{(n+1)!}{z(z+1) \cdots (z+n-1)} \text{ by induction hypothesis} \\
 &= \frac{n! n^z}{z(z+1) \cdots (z+n)}
 \end{aligned} \tag{5.44}$$

Therefore,  $\Gamma(z) = \lim_{n \rightarrow \infty} \frac{n! n^z}{z(z+1) \cdots (z+n)}$ ,  $\operatorname{Re} z > 0$ .

For  $\operatorname{Re} z > 0$ ,

$$\begin{aligned}
 \frac{1}{\Gamma(z)} &= \lim_{n \rightarrow \infty} \frac{z(z+1) \cdots (z+n)}{n! n^z} \\
 &= z \lim_{n \rightarrow \infty} e^{-z \ln n} \left(1 + \frac{z}{n}\right) \left(1 + \frac{z}{2n}\right) \cdots \left(1 + \frac{z}{nn}\right) \\
 &= z \lim_{n \rightarrow \infty} \exp \left[ z \left( \sum_{k=1}^n \frac{1}{k} - \ln n \right) \right] \prod_{k=1}^n \left(1 + \frac{z}{kn}\right) e^{-\frac{z}{kn}} \\
 &= z e^{\gamma z} \prod_{k=1}^{\infty} \left(1 + \frac{z}{k}\right) e^{-\frac{z}{k}}
 \end{aligned} \tag{5.45}$$

Weierstrass factorization theorems implies that (5.45) represents an entire function with zeros at  $0, -1, -2, \dots$ .

Then the extension of  $\Gamma(z)$  and  $\frac{1}{\Gamma(z)}$  should have those above properties (c), (d) and (e).

(f) For  $\forall z \in \mathbb{C} \setminus \mathbb{Z}$ , we have

$$\begin{aligned}
\frac{1}{\Gamma(z)\Gamma(1-z)} &= -\frac{1}{z\Gamma(z)\Gamma(1-z)} \\
&= -\frac{1}{z} \cdot ze^{\gamma z} \prod_{k=1}^{\infty} \left(1 + \frac{z}{k}\right) e^{-\frac{z}{k}} \cdot (-z) e^{-\gamma z} \prod_{k=1}^{\infty} \left(1 - \frac{z}{k}\right) e^{\frac{z}{k}} \\
&= z \prod_{k=1}^{\infty} \left(1 - \frac{z^2}{k^2}\right) \\
&\stackrel{(5.18)}{=} \frac{\sin \pi z}{\pi}
\end{aligned} \tag{5.46}$$

□

One may use (d) to prove

$$\sqrt{\pi}\Gamma(2z) = 2^{2z-1}\Gamma(z)\Gamma\left(z + \frac{1}{2}\right), \quad z \neq 0, -1, -2, \dots, \quad z \neq -\frac{1}{2}, -\frac{3}{2}, \dots \tag{5.47}$$

which is known as Legendre's duplication formula.

## 5.3 Entire Functions

### 5.3.1 Jensen's formula

**Theorem 5.20** (Jensen's formula). *Suppose  $f$  is analytic in  $|z| \leq \rho$ , and all of its zeros in  $|z| < \rho$  are  $a_1, \dots, a_n$  (multiple zeros being repeated) Assume  $z = 0$  is not a zero. Then*

$$\ln |f(0)| = -\sum_{j=1}^n \ln \left( \frac{\rho}{|a_j|} \right) + \frac{1}{2\pi} \int_0^{2\pi} \ln |f(\rho e^{i\theta})| d\theta \tag{5.48}$$

**Remark 5.21.** (1) Jensen's formula relates the modulus  $|f(z)|$  on a circle to the modulus of the zero in the interior enclosed by the circle.

(2) If  $f(0) = 0$ , then  $f(z) = Cz^k + \dots$ . We apply (5.48) to  $f(z) \left(\frac{\rho}{z}\right)^k$  and get

$$\ln |c| + k \ln \rho = - \sum_{j=1}^n \ln \left( \frac{\rho}{|a_j|} \right) + \frac{1}{2\pi} \int_0^{2\pi} \ln |f(\rho e^{i\theta})| d\theta \quad (5.49)$$

*Proof.* We first assume that  $f$  is free of zeros in  $|z| \leq \rho$ . Then  $\ln |f(z)|$  is harmonic in  $|z| \leq \rho$ . Mean value property 4.70 implies  $\ln |f(0)| = \frac{1}{2\pi} \int_0^{2\pi} \ln |f(\rho e^{i\theta})| d\theta$ . It remains valid if  $f$  has zeros on the circle  $|z| = \rho$ . We divide  $f$  with one factor  $z - \rho e^{i\theta_0}$  for zeros  $\rho e^{i\theta_0}$ . It suffices to prove that

$$\begin{aligned} \ln \rho &= \frac{1}{2\pi} \int_0^{2\pi} \ln |\rho e^{i\theta} - \rho e^{i\theta_0}| d\theta \\ \Leftrightarrow \int_0^{2\pi} \ln |e^{i\theta} - e^{i\theta_0}| d\theta &= 0 \Leftrightarrow \int_0^{2\pi} \ln |e^{i\theta} - 1| d\theta = 0 \Leftrightarrow \int_0^\pi \ln \sin t dt = -\pi \ln 2 \end{aligned}$$

Finally, for any  $f$  satisfying the assumption of the theorem, we know

$$F(z) = f(z) \cdot \prod_{j=1}^n \frac{\rho^2 - \bar{a}_j z}{\rho(z - a_j)} \quad (5.50)$$

is free from zeros in the disk  $|z| < \rho$ , and  $|F(z)| = |f(z)|$  on  $|z| = \rho \Rightarrow$

$$\begin{aligned} \ln |F(0)| &= \frac{1}{2\pi} \int_0^{2\pi} \ln |f(\rho e^{i\theta})| d\theta \\ \Rightarrow \ln |f(0)| &= - \sum_{j=1}^n \ln \left( \frac{\rho}{|a_j|} \right) + \frac{1}{2\pi} \int_0^{2\pi} \ln |f(\rho e^{i\theta})| d\theta \end{aligned}$$

□

**Remark 5.22.** Apply the Poisson formula 4.75 to  $\ln |F(z)|$ , we get the **Poisson-**

## Jensen formula

$$\ln |f(z)| = - \sum_{j=1}^n \ln \left| \frac{\rho^2 - \overline{a_j} z}{\rho(z - a_j)} \right| + \frac{1}{2\pi} \int_0^{2\pi} \operatorname{Re} \frac{\rho e^{i\theta} + z}{\rho e^{i\theta} - z} \ln |f(\rho e^{i\theta})| d\theta, \quad \forall z \text{ with } |z| < \rho, f(z) \neq 0 \quad (5.51)$$

### 5.3.2 Order of an entire function

The **order** of the entire function  $f$  is defined by

$$\lambda := \limsup_{r \rightarrow \infty} \frac{\ln \ln M(r)}{\ln r} \quad \text{where } M(r) := \max_{|z|=r} |f(z)| \quad (5.52)$$

In other words,  $\lambda$  is the smallest number *s.t.*

$$M(r) \leq \exp[r^{\lambda+\varepsilon}] \quad (5.53)$$

for  $\forall \varepsilon > 0$  as soon as  $r$  large enough.

**Theorem 5.23** (Hadamard Theorem). *The genus  $h$  and the order  $\lambda$  of an entire function satisfy the double inequality  $h \leq \lambda \leq h + 1$ .*

The proof is omitted now.

## 5.4 The Riemann Zeta Function

We proved in homework that the Riemann zeta function

$$\zeta(s) = \sum_{n=1}^{\infty} \frac{1}{n^s}, \quad s = \sigma + it \quad (5.54)$$

is analytic in the half-plane  $\operatorname{Re} s > 1$ .

**Theorem 5.24.**  *$\zeta$  has the following properties:*

(a) (Euler product formula)  $\zeta$  has the infinite product representation

$$\zeta(s) = \prod_{p \text{ prime}} \frac{1}{1 - p^{-s}}, \text{ Res} > 1$$

(b)  $\zeta$  extends to a meromorphic function on  $\mathbb{C}$  whose only pole is a simple pole at  $s = 1$  with residue 1.

(c)  $\zeta$  has no zeros in  $\text{Res} \geq 1$ , all zeros of  $\zeta$  in  $\text{Res} \leq 0$  are at  $s = -2k$ ,  $k \in \mathbb{N}$ .

(d)  $\zeta(2n) = \frac{(-1)^{n-1}(2\pi)^{2n}}{2 \cdot (2n)!} B_{2n}$ ,  $n \in \mathbb{N}$  where  $B_n$  are the Bernoulli numbers, defined by

$$\frac{z}{e^z - 1} = \sum_{m=0}^{\infty} \frac{B_m}{m!} z^m, |z| < 2\pi$$

$$\text{and } \zeta(-n) = -\frac{B_{n+1}}{n+1}, n \in \mathbb{N}.$$

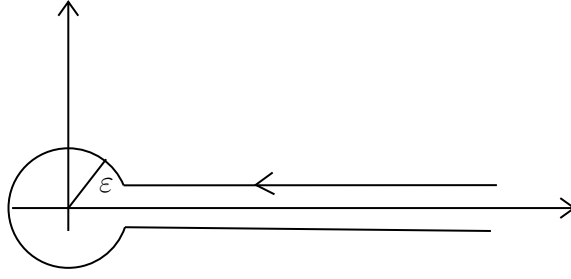
(e)  $\zeta$  satisfies the functional equation  $\zeta^*(1-s) = \zeta^*(s)$  where  $\zeta^*$  is the **symmetrized zeta function** defined by

$$\zeta^*(s) = \pi^{-\frac{s}{2}} \Gamma\left(\frac{s}{2}\right) \zeta(s) \quad (5.55)$$

(f)  $\zeta^*(s) = -\frac{1}{1-s} - \frac{1}{s} + \frac{1}{2} \int_1^{\infty} (t^{-\frac{s+1}{2}} + t^{\frac{s-2}{2}})(\theta(t) - 1)dt$ ,  $s \in \mathbb{C} \setminus \{0, 1\}$ , where  $\theta$  is one of the **Jacobi theta series**, defined as

$$\theta(t) = \sum_{n=-\infty}^{\infty} e^{-\pi n^2 t} \quad (5.56)$$

(g)  $\zeta(s) = \frac{\Gamma(1-s)}{2\pi i} \int_C \frac{(-z)^s}{e^z - 1} \cdot \frac{dz}{z}$  where  $C$  is the contour shown in the picture, with  $\varepsilon < 2\pi$ ,  $(-z)^s = \exp[s \ln(-z)]$ ,  $\ln(-z)$  is chosen s.t.  $-\pi < \text{Im} \ln(-z) < \pi$ .



*Proof.*

$$\prod_{p \text{ prime}} \frac{1}{1 - p^{-s}} = \frac{1}{\prod_{p \text{ primes}} (1 - p^{-s})}, \quad \text{Res} > 1 \text{ converges absolutely since}$$

$\sum_{p \text{ prime}} |p^{-s}| = \sum_{p \text{ prime}} p^{-\text{Res}}$  converges for  $\text{Res} > 1$ . Hence,  $F(s) = \prod_{p \text{ prime}} \frac{1}{1 - p^{-s}}$  is analytic and nonzero in  $\text{Res} > 1$ . It remains to prove that  $\zeta(s) = F(s)$  for  $\text{Res} > 1$ .

$$\begin{aligned} \zeta_N(s) &:= \prod_{p \leq N, p \text{ prime}} \frac{1}{1 - p^{-s}} \\ &= \prod_{p \leq N, p \text{ prime}} \sum_{k=0}^{\infty} p^{-ks} \\ &= \sum_{\substack{n=p_1^{k_1} p_2^{k_2} \dots p_m^{k_m} \\ p_j \leq N, p_j \text{ prime}}} \frac{1}{n^s}, \quad \text{Res} > 1 \end{aligned}$$

By the fundamental theorem of arithmetic,

$$|\zeta(s) - \zeta_N(s)| \leq \sum_{n \geq N} \frac{1}{|n^s|} \rightarrow 0 \text{ as } N \rightarrow \infty$$

which proves (a), and part of (c):  $\zeta$  has no zeros in  $\text{Res} > 1$ .

Define  $\theta(t) = \sum_{n=-\infty}^{\infty} e^{-\pi n^2 t}$ . We next prove that  $\theta(t) = \frac{1}{\sqrt{t}} \theta\left(\frac{1}{t}\right)$ ,  $\forall t > 0$ .

$f(x) = \exp(-\pi x^2)$  whose Fourier transform is

$$\hat{f}(k) = \int_{-\infty}^{\infty} f(x) \exp[-2\pi i k x] dx = \frac{1}{\sqrt{t}} \exp\left[-\frac{\pi k^2}{t}\right]$$

The Poisson summation formula implies

$$\theta(t) = \sum_{n=-\infty}^{\infty} e^{-\pi n^2 t} = \sum_{n=-\infty}^{\infty} \frac{1}{\sqrt{t}} \exp\left[-\frac{\pi k^2}{t}\right] = \frac{1}{\sqrt{t}} \theta\left(\frac{1}{t}\right) \quad (5.57)$$

Note that  $\theta(t) - 1 = 2 \sum_{n=1}^{\infty} e^{-\pi n^2 t} \leq 2 \sum_{n=1}^{\infty} e^{-\pi n t} = 2 \frac{e^{-\pi t}}{1 - e^{-\pi t}}, \forall t > 0$ .

i.e.  $\theta(t) = 1 + O(e^{-\pi t})$  as  $t \rightarrow \infty$ .

(5.57) implies  $\theta(t) = \frac{1}{\sqrt{t}} [1 + O(e^{-\pi/t})]$  as  $t \rightarrow 0^+ \Rightarrow \theta(t) = O(\frac{1}{\sqrt{t}})$  as  $t \rightarrow 0^+$ .

$$\Gamma\left(\frac{s}{2}\right) = \int_0^{\infty} e^{-t} t^{\frac{s}{2}-1} dt, \text{ Res} > 1 \quad (5.58)$$

Then replace  $t$  with  $\pi n^2 t$ . We obtain that

$$\pi^{-\frac{s}{2}} \Gamma\left(\frac{s}{2}\right) n^{-s} = \int_0^{\infty} e^{-\pi n^2 t} t^{\frac{s}{2}-1} dt, \text{ Res} > 1 \quad (5.59)$$

Summing over  $n \Rightarrow$

$$\begin{aligned} \zeta^*(s) &= \sum_{n=1}^{\infty} \int_0^{\infty} e^{-\pi n^2 t} t^{\frac{s}{2}-1} t^{\frac{s}{2}-1} dt \\ &\stackrel{\text{Fubini}}{=} \int_0^{\infty} \left( \sum_{n=0}^{\infty} e^{-\pi n^2 t} \right) t^{\frac{s}{2}-1} dt \\ &= \int_0^{\infty} \frac{\theta(t) - 1}{2} t^{\frac{s}{2}-1} dt, \text{ Res} > 1 \end{aligned} \quad (5.60)$$

Define  $g(t) = \frac{\theta(t) - 1}{2}$ . Then  $g(t) = \frac{\frac{1}{\sqrt{t}} \theta(\frac{1}{t}) - 1}{2} = \frac{1}{\sqrt{t}} g\left(\frac{1}{t}\right) + \frac{1}{2\sqrt{t}} - \frac{1}{2}$ . Therefore,

$$\begin{aligned} \zeta^*(s) &= \int_0^1 g(t) t^{\frac{s}{2}-1} dt + \int_1^{\infty} g(t) t^{\frac{s}{2}-1} dt \\ &= \int_0^1 \left[ \frac{1}{\sqrt{t}} g\left(\frac{1}{t}\right) + \frac{1}{2\sqrt{t}} - \frac{1}{2} \right] t^{\frac{s}{2}-1} dt + \int_1^{\infty} g(t) t^{\frac{s}{2}-1} dt \\ &= -\frac{1}{s} - \frac{1}{1-s} + \frac{1}{2} \int_1^{\infty} [\theta(t) - 1] \cdot [t^{\frac{-s-1}{2}} + t^{\frac{s-1}{2}}] dt, \text{ Res} > 1 \end{aligned} \quad (5.61)$$



which is analytic if we apply Weierstrass theorem to the final integral. So  $\zeta$  can be extended to a meromorphic function on  $\mathbb{C}$ , whose poles are 0, 1.

(5.55) implies  $\zeta^*(s) = \zeta^*(1-s)$ .

This combined with Legendre's duplication formula and  $\frac{1}{\Gamma(1-\frac{s}{2})\Gamma(\frac{s}{2})} = \frac{\sin(\pi\frac{s}{2})}{\pi}$ , we obtain that

$$\zeta(s) = 2^s \pi^{s-1} \sin(\frac{\pi s}{2}) \Gamma(1-s) \zeta(1-s), \quad s \in \Gamma \setminus \{0, 1\} \quad (5.62)$$

$\zeta^*$  has simple poles at  $s = 0$  and  $s = 1$ , with residues  $-1$  and  $1$  respectively.

$\zeta(s) = \frac{\pi^{\frac{s}{2}} \zeta^*(s)}{\Gamma(\frac{s}{2})} \Rightarrow \zeta$  has a simple pole at  $s = 1$  with residue  $\frac{\pi^{\frac{1}{2}}}{\Gamma(\frac{1}{2})} = 1$ .  $s = 0$  is a removable singularity since  $\Gamma(s) = \frac{1}{s}$  as  $s \rightarrow 0$ . And  $\zeta(0) = \frac{1 \cdot \frac{-1}{s}}{\frac{1}{\frac{s}{2}}} = -\frac{1}{2}$ .

(5.62) implies zeros of  $\zeta$  for  $\text{Res} < 0$  are precisely  $s = -2k, k \in \mathbb{N}$ .

We have proved (b),(c),(e),(f).

We next prove (g).

$$\begin{aligned} \int_0^\infty \frac{t^{s-1}}{e^t - 1} dt &= \int_0^\infty t^{s-1} \sum_{n=1}^\infty e^{-nt} dt \\ &\stackrel{\text{Fubini}}{=} \sum_{n=0}^\infty \int_0^\infty t^{s-1} e^{-nt} dt \\ &\stackrel{u=nt}{=} \sum_{n=1}^\infty \frac{1}{n^s} \int_0^\infty u^{s-1} e^{-u} du \\ &= \Gamma(s) \zeta(s), \quad \text{Res} > 1 \end{aligned}$$

For  $\int_C \frac{(-z)^s}{e^z - 1} \cdot \frac{dz}{z}$ ,  $\text{Res} > 1$ , as  $\varepsilon \downarrow 0$ , the contribution from the circle of radius  $\varepsilon \rightarrow 0$ . Then

$$\int_C \frac{(-z)^s}{e^z - 1} \cdot \frac{dz}{z} = \int_{-\infty}^0 \frac{\exp[s(\ln t - i\pi)]}{e^t - 1} \cdot \frac{ddt}{t} + \int_0^\infty \frac{\exp[s(\ln t + i\pi)]}{e^t - 1} \cdot \frac{dt}{t}$$

$$\begin{aligned}
&= (e^{is\pi} - e^{-is\pi}) \int_0^\infty \frac{t^{s-1}}{e^t - 1} ds \\
&= 2i \sin(s\pi) \Gamma(s) \zeta(s), \text{ Res} > 1 \\
\Rightarrow \zeta(s) &= \frac{1}{2i \sin(s\pi) \Gamma(s)} \int_C \frac{(-z)^s}{e^z - 1} \cdot \frac{dz}{z} \\
&= \frac{\Gamma(z - s)}{2\pi i} \int_C \frac{(-z)^s}{e^z - 1} \cdot \frac{dz}{z}, \text{ Res} > 1
\end{aligned} \tag{5.63}$$

For (d), for  $\forall n \in \mathbb{N}$ ,

$$\begin{aligned}
\zeta(-n) &\stackrel{(5.63)}{=} \frac{\Gamma(1+n)}{2\pi i} \int_C \frac{(-z)^{-n}}{e^z - 1} dz \\
&= \frac{n!}{2\pi i} \int_C \frac{(-z)^{-n}}{z^2} \sum_{m=0}^\infty \frac{B_m}{m!} z^m dz \\
&= n!(-1)^n \frac{B_{n+1}}{(n+1)!} \\
&= \frac{(-1)^n B_{n+1}}{n+1} \\
&= \frac{-B_{n+1}}{n+1}
\end{aligned} \tag{5.64}$$

since  $B_{2k+1} = 0$  for  $k \in \mathbb{N}$ .

$$\begin{aligned}
(5.62) \Rightarrow \zeta(2n) &= 2^{2n} \pi^{2n-1} \sin(\pi n) \Gamma(1-2n) \zeta(1-2n), \text{ } n \in \mathbb{N} \\
&= \frac{(2\pi)^{2n} (-1)^n}{2(2n-1)!} \cdot \frac{-B_{2n}}{2n} \\
&= \frac{(-1)^n (2\pi)^{2n}}{2(2n)!} B_{2n}, \text{ } n \in \mathbb{N}
\end{aligned} \tag{5.65}$$

□

## 6 Riemann Mapping Theorem

### 6.1 Normal families

#### 6.1.1 The Arzela-Ascoli Theorem

Let  $\mathcal{F}$  be a family of functions  $f$ , defined in a fixed region  $\Omega \subset \mathbb{C}$ , with values in a metric space  $S$ . The distance function in  $S$  is denoted by  $d$ .

The functions in a family  $\mathcal{F}$  are said to be **equicontinuous** on a set  $E \subset \Omega$  if for  $\forall \varepsilon > 0, \exists \delta > 0$  s.t.  $d(f(z), f(z_0)) < \varepsilon, \forall z, z_0 \in E$  with  $|z - z_0| < \delta$  and  $\forall f \in \mathcal{F}$ .

**Remark 6.1.** Each  $f$  in an equicontinuous family is itself uniformly continuous on  $E$ .

A family is said to be **normal** (or **relatively compact**) in  $\Omega$  if every sequence  $\{f_n\}$  of functions  $f_n \in \mathcal{F}$  contains a subsequence which converges uniformly on every compact subset of  $\Omega$ .

**Remark 6.2.** This definition does not require the limit functions of the convergent subsequences to be members of  $\mathcal{F}$ .

Let  $E_k := \Omega \cap \overline{B(0, k)} \cap \{z \in \mathbb{C} : d(z, \partial\Omega) \geq \frac{1}{k}\}, k \in \mathbb{N}$ .

Then  $E_k$  is bounded and closed, and hence compact.

$\forall$  compact set  $E \subset \Omega$  is bounded and has positive distance from  $\partial\Omega \Rightarrow E \subset E_k$ .

So the choice of  $E_k$  is representative.

Define  $\delta(a, b) = \frac{d(a, b)}{1 + d(a, b)}$ . It is easy to check that  $\delta$  is a metric and has the advantage of being bounded.

Define

$$\delta_k(f, g) = \sup_{z \in E_k} \delta(f(z), g(z)), \quad \rho(f, g) = \sum_{k=1}^{\infty} \delta_k(f, g) 2^{-k} \quad (6.1)$$

It is easy to check that  $\rho(f, g)$  is finite and is a distance between  $f$  and  $g$  on  $\Omega$ .

**Lemma 6.3.**  $f_n \rightrightarrows f$  on every compact subset of  $\Omega$  if and only if  $\rho(f_n, f) \rightarrow 0$  as  $n \rightarrow \infty$ .

*Proof.* " $\Leftarrow$ ":  $\forall \varepsilon > 0, \exists N \in \mathbb{N}$  s.t.  $\rho(f_n, f) < \varepsilon, \forall n \geq N$ .

(6.1) implies  $\delta_k(f_n, f) < 2^k \varepsilon, \forall n \geq N$  and  $\forall$  fixed  $k \in \mathbb{N}$ . Then  $f_n \rightrightarrows f$  on  $E_k$  w.r.t.  $\delta$ -metric, and hence w.r.t. the  $d$ -metric.  $\Rightarrow f_n \rightrightarrows f$  on every compact subset  $E$  of  $\Omega$  since  $E \subset E_k$  for some  $k \in \mathbb{N}$ .

" $\Rightarrow$ ":  $E_k$  is a compact subset of  $\Omega \Rightarrow f_n \rightrightarrows f$  on  $E_k$  w.r.t.  $d$ -metric, and hence w.r.t.  $\delta$ -metric  $\Rightarrow \delta_k(f_n, f) \rightarrow 0$  as  $n \rightarrow \infty$  for  $\forall$  fixed  $k \in \mathbb{N}$ . Then

$$\lim_{n \rightarrow \infty} \sum_{n=1}^{\infty} \delta_k(f_n, f) 2^{-k} \stackrel{DCT}{=} \sum_{n=1}^{\infty} \lim_{n \rightarrow \infty} \delta_k(f_n, f) 2^{-k} = 0 \quad (6.2)$$

So  $\rho(f_n, f) \rightarrow 0$  as  $n \rightarrow \infty$ . □

**Theorem 6.4.** A family  $\mathcal{F}$  is normal iff its closure  $\overline{\mathcal{F}}$  w.r.t.  $\rho$  is compact.

*Proof.* " $\Leftarrow$ ":  $\overline{\mathcal{F}}$  is compact  $\Leftrightarrow \forall$  infinite sequence of  $\overline{\mathcal{F}}$  has a limit point in  $\overline{\mathcal{F}}$ . So from the lemma 6.3  $\overline{\mathcal{F}}$  is normal follows. Then  $\mathcal{F}$  is normal. " $\Rightarrow$ ": For  $f_n \in \overline{\mathcal{F}}$ , WLOG we assume  $f_n \in \overline{\mathcal{F}} \setminus \mathcal{F}$  for all large  $n$ . Then  $\forall n \in \mathbb{N}, \exists \tilde{f}_n \in \mathcal{F}$  s.t.  $\rho(f_n, \tilde{f}_n) < \frac{1}{n}$ .  $\mathcal{F}$  is normal  $\Rightarrow \{\tilde{f}_n\}$  has a convergent subsequence  $\{\tilde{f}_{n_k}\}_{k \in \mathbb{N}}$ . i.e.  $\tilde{f}_{n_k} \rightrightarrows f \in \overline{\mathcal{F}}$  on every compact subset of  $\Omega$ . From the lemma 6.3  $\rho(\tilde{f}_{n_k}, f) \rightarrow 0$  as  $k \rightarrow \infty \Rightarrow \rho(f_{n_k}, f) \rightarrow 0$  as  $k \rightarrow \infty$  since

$$\rho(f_{n_k}, f) \leq \rho(f_{n_k}, \tilde{f}_{n_k}) + \rho(\tilde{f}_{n_k}, f) \leq \frac{1}{n_k} + \rho(\tilde{f}_{n_k}, f) \quad (6.3)$$

□

**Theorem 6.5.** The family  $\mathcal{F}$  is totally bounded w.r.t.  $\rho$  iff for  $\forall$  compact set  $E \subset \Omega$  and  $\forall \varepsilon > 0, \exists f_1, f_2, \dots, f_n \in \mathcal{F}$  s.t. every  $f \in \mathcal{F}$  satisfies  $d(f, f_j) < \varepsilon$  on  $E$  for some  $j$ .

*Proof.* " $\Rightarrow$ ":  $\mathcal{F}$  is totally bounded  $\Rightarrow \forall \varepsilon > 0, \exists f_1, \dots, f_n \in \mathcal{F}$  s.t.  $\forall f \in \mathcal{F}, \rho(f, f_j) \varepsilon$  for some  $f_j$ . Then (6.1) implies  $\delta_k(f, f_j) < 2^k \varepsilon$  for each fixed  $k \in \mathbb{N} \Rightarrow$

$\delta(f(z), f_j(z)) < 2^k \varepsilon, \forall z \in E_k \Rightarrow d(f(z), f_j(z)) < \frac{2^k \varepsilon}{1 - 2^k \varepsilon}, \forall z \in E_k, \forall k$  fixed and  $\varepsilon$  small enough.

" $\Leftarrow$ " Fix  $\varepsilon > 0$ , pick  $k_0 \in \mathbb{N}$  s.t.  $2^{-k_0} < \frac{\varepsilon}{2}$ .  $\forall f \in \mathcal{F}, \exists j_0 \in \{1, 2, \dots, n\}$  s.t.  $\delta(f(z), f_{j_0}(z)) \leq d(f(z), f_{j_0}(z)) < \frac{\varepsilon}{2k_0}, \forall z \in E_{k_0}$ . Then  $\delta_k(f, f_{j_0}) < \frac{\varepsilon}{2k_0}, \forall k \leq k_0 \Rightarrow \rho(f, f_{j_0}) < k_0 \cdot \frac{\varepsilon}{2k_0} + 2^{-k_0} < \varepsilon$   $\square$

**Theorem 6.6** (Arzela-Ascoli Theorem). *A family of continuous functions with values in a complete metric space  $S$  is normal in the region  $\Omega \subset \mathbb{C}$  iff (1)  $\mathcal{F}$  is equicontinuous on every compact set  $E \subset \Omega$ . (2)  $\forall z \in \Omega, \{f(z) : f \in \mathcal{F}\}$  lie in a compact subset of  $S$ .*

*Proof.* " $\Rightarrow$ ":  $\mathcal{F}$  is normal  $\xrightarrow{\text{theorem 6.4}} \overline{\mathcal{F}}$  is compact w.r.t.  $\rho \Rightarrow \overline{\mathcal{F}}$  is totally bounded w.r.t.  $\rho \Rightarrow \mathcal{F}$  is totally bounded w.r.t.  $d$  by theorem 6.5.

Let  $E \subset \Omega$  be compact.  $\forall \varepsilon > 0$ , determine  $f_1, \dots, f_n \in \mathcal{F}$  as in the previous theorem.  $\mathcal{F}$  is equicontinuous on  $E \Rightarrow \exists \delta > 0$  s.t.

$$d(f_j(z), f_j(z_0)) < \varepsilon, \forall z, z_0 \in E \text{ with } |z - z_0| < \delta$$

$\forall f \in \mathcal{F}$ . Let  $f_{j_0}$  be the corresponding  $f_j$  from the previous theorem. Then

$$d(f(z), f(z_0)) \leq d(f(z), f_{j_0}(z)) + d(f_{j_0}(z), f_{j_0}(z_0)) + d(f_{j_0}(z_0), f(z_0)) < 3\varepsilon \quad (6.4)$$

So we prove (1). To prove (2), we prove  $\overline{\{f(z) : f \in \mathcal{F}\}}$  is compact. Let  $\{\omega_0\}$  be a sequence in  $\overline{\{f(z) : f \in \mathcal{F}\}}$ . Then  $\forall \omega_n, \exists f_n \in \mathcal{F}$  s.t.  $d(f_n, \omega) < \frac{1}{n}$ .  $\mathcal{F}$  is normal  $\Rightarrow \exists$  convergent subsequence  $\{f_{n_k}(z)\} \Rightarrow \{\omega_{n_k}\}$  converges to the same value.

" $\Leftarrow$ " Choose any sequence  $\{\zeta_j\}$  which is dense in  $\Omega$ . Let  $\{f_n\}$  be any sequence in  $\mathcal{F}$ .

$\{f_n(\zeta_1)\}_{n \in \mathbb{N}}$  is in a compact subset of  $S$ .  $\Rightarrow \exists$  a convergent subsequence  $\{f_{n,1}(\zeta_1)\}_{n \in \mathbb{N}}$ .

$\{f_{n,1}(\zeta_1)\}_{n \in \mathbb{N}}$  is in a compact subset of  $S$ .  $\Rightarrow \exists$  a convergent subsequence  $\{f_{n,2}(\zeta_1)\}_{n \in \mathbb{N}} \cdots$

Continue this steps and we obtain the subsequence  $\{f_{n,n}\}$  that converges at each  $\zeta_j$ .

Let  $E \subset \Omega$  be compact  $\Rightarrow d(E, \partial\Omega) > 0 \Rightarrow r := \frac{d(E, \partial\Omega)}{2}$ ,  $K = \bigcup_{z \in E} B(z, r)$  has closure  $\overline{K} \subset \Omega$ .

$\mathcal{F}$  is equicontinuous on  $\overline{K} \Rightarrow \forall \varepsilon > 0, \exists \delta < r$  s.t.

$$d(f(z), f(z_0)) < \frac{\varepsilon}{3}, \forall z, z_0 \in \overline{K} \text{ with } |z - z_0| < \delta \quad (6.5)$$

$\forall z \in E, B(z, \delta)$  contains some  $\zeta_j \Rightarrow B(\zeta_j, \delta)$  contains  $z$ .

$E$  is compact  $\Rightarrow \exists N \in \mathbb{N}$  s.t.  $E \subset \bigcup_{j=1}^N B(\zeta_j, \delta)$  for some  $\zeta_1, \zeta_2, \dots, \zeta_N$ . By the construction of  $f_{n,n}$ ,  $\exists N_\varepsilon \in \mathbb{N}$  s.t.

$$d(f_{n,n}(\zeta_j), f_{m,m}(\zeta_j)) < \frac{\varepsilon}{3}, \forall m, n \geq N_\varepsilon, \forall j = 1, 2, \dots, N$$

$\forall z \in E, \exists \zeta_{j_0} = \zeta_{j_0}(z)$  s.t.  $|z - \zeta_{j_0}| < \delta$  for some  $j_0 \in \{1, 2, \dots, N\}$ .

$$(6.5) \Rightarrow d(f(z), f(\zeta_{j_0})) < \frac{\varepsilon}{3}, \forall f \in \mathcal{F}$$

Then

$$\begin{aligned} d(f_{n,n}(z), f_{m,m}(z)) &\leq d(f_{n,n}(z), f_{m,m}(\zeta_{j_0})) + d(f_{n,n}(\zeta_{j_0}), f_{m,m}(\zeta_{j_0})) + d(f_{m,m}(\zeta_{j_0}), f_{m,m}(z)) \\ &< \varepsilon, \quad \forall m, n \geq N_\varepsilon \end{aligned}$$

So  $\{f_{n,n}\}$  is uniformly Cauchy on  $E \Rightarrow \{f_{n,n}\}$  converges uniformly on  $E$ .

**Remark 6.7.** In the text, p.233, it is erroneously assumed that  $\zeta_k \in E$ .

□

### 6.1.2 Montel's Theorem

**Theorem 6.8** (Montel's Theorem). *A family of analytic functions  $\mathcal{F}$  is normal w.r.t.  $\mathbb{C}$  iff the functions in  $\mathcal{F}$  are uniformly bounded on every compact set of  $\Omega$ , where  $\Omega$  is a region in  $\mathbb{C}$*

*Proof.* " $\Rightarrow$ ": For  $\forall z_0 \in \Omega$ ,  $\exists r > 0$  s.t.  $\overline{B(z_0, r)} \subset \Omega$ . The Arzela-Ascoli theorem implies  $\mathcal{F}$  is equicontinuous on  $\overline{B(z_0, r)}$  and  $|f(z_0)| \leq M$  for some  $M > 0$  and  $\forall f \in \mathcal{F}$ . So for  $\forall \varepsilon > 0$ ,  $\exists \delta > 0$  s.t.  $|f(z)| \leq M + \varepsilon$  for  $\forall z \in B(z_0, \delta)$ .

Any compact set can be covered by a finite number of such  $B(z_0, \delta) \Rightarrow \mathcal{F}$  is uniformly bounded on every compact set.

" $\Leftarrow$ " Arzela-Ascoli theorem shows that it suffices to prove equicontinuity. Let  $E \subset \Omega \Rightarrow \exists r = \frac{4}{d(E, \partial\Omega)} > 0$  s.t.  $K = \bigcup_{z \in E} B(2r)$  has closure  $\overline{K} \subset \Omega$ .

Let  $M = \sup_{f \in \mathcal{F}} \sup_{z \in \overline{K}} |f(z)|$ . Then  $M < \infty$ . For  $\forall z, z_0 \in E$  satisfying  $|z - z_0| < r$ , let  $\gamma$  be the circle  $|\zeta - z| = 2r$  which is contained in  $\overline{K} \subset \Omega$ . We also have  $|\zeta - z| = 2r$ ,  $|\zeta - z_0| > r$  for  $\forall \zeta \in \gamma$ . Cauchy's formula implies

$$f(z) - f(z_0) = \frac{1}{2\pi i} \int_{\gamma} \left[ \frac{f(\zeta)}{\zeta - z} - \frac{f(\zeta)}{\zeta - z_0} \right] d\zeta = \frac{z - z_0}{2\pi i} \int_{\gamma} \frac{f(\zeta)}{(\zeta - z)(\zeta - z_0)} d\zeta$$

for  $\forall f \in \mathcal{F}$ . For  $\forall \varepsilon > 0$ , let  $\delta = \min\{\frac{\varepsilon r}{M}, r\} \Rightarrow |f(z) - f(z_0)| \leq \frac{1}{2\pi} \cdot \frac{4\pi r}{2r^2} M |z - z_0| \leq \varepsilon$ ,  $\forall z, z_0 \in E$  with  $|z - z_0| < \delta$ ,  $\forall f \in \mathcal{F} \Rightarrow \mathcal{F}$  is equicontinuous on  $E$ .  $\square$

### 6.1.3 Marty's Theorem

For  $S = \hat{\mathbb{C}}$ , we use the chordal metric  $d(z_1, z_2) = \frac{2|z_1 - z_2|}{\sqrt{(1 + |z_1|^2)(1 + |z_2|^2)}}$ .

**Lemma 6.9.**

1 If a sequence of meromorphic functions converges in the sense of chordal metric,

uniformly on each compact subset of  $\Omega$ , then the limit function is either meromorphic or  $\equiv \infty$  in  $\Omega$ .

2 If a sequence of analytic functions converges in the same sense, then limit function is analytic in  $\Omega$  or  $\equiv \infty$  in  $\Omega$

*Proof.* (1) Suppose  $f_n \rightrightarrows f$  in each compact subset of  $\Omega$ . Then  $f$  is continuous in the chordal metric.  $\forall z_0 \in \Omega$ , if  $f(z_0) \neq \infty$ , then  $f$  is bounded in a neighborhood of  $z_0$  by continuity, and thus  $f_n \neq \infty$  in the same NBHD of all large  $n$ . Applying Weierstrass theorem 5.1, we get that  $f$  is analytic in a neighborhood of  $z_0$ .

For  $f(z_0) = \infty$ ,  $d(\frac{1}{z_1}, \frac{1}{z_2}) = d(z_1, z_2) \Rightarrow \frac{1}{f_n} \rightrightarrows \frac{1}{f}$  on each compact subset. It follows that  $\frac{1}{f}$  is analytic in a neighborhood of  $z_0$  by Weierstrass theorem 5.1. So  $f$  is either meromorphic in this neighborhood or  $f \equiv \infty$  i.e.  $\frac{1}{f} \equiv 0$  in this neighborhood.

The latter case shows that  $f \equiv \infty$  on  $\Omega$  since we just proved  $f^{-1}(\infty)$  is open, and it is clear that  $f^{-1}(\infty)$  is relatively closed in  $\Omega$ .

(2) For  $z_0 \in \Omega$ , if  $f(z_0) \neq \infty$ , similarly  $f$  is analytic in a neighborhood of  $z_0$ . If  $f(z_0) = \infty$ , then  $\frac{1}{f_n} \neq 0$  for  $\forall z$  in a neighborhood of  $z_0$  implies that  $\frac{1}{f} \equiv 0$  in a neighborhood of  $z_0 \Rightarrow f \equiv \infty$  on  $\Omega$  by Hurwitz Theorem 5.3.  $\square$

**Remark 6.10.** It shows that Hurwitz theorem 5.3 can restrict the codomain of  $f$  if such codomain of  $f_n$  are restricted to the same region.

**Theorem 6.11** (Marty's Theorem). *A family of analytic or meromorphic functions  $\mathcal{F}$  is normal w.r.t.  $\hat{\mathbb{C}}$  iff*

$$\rho(f)(z) := \frac{2|f'(z)|}{1 + |f(z)|^2} \quad (6.6)$$

*are locally bounded i.e.  $\{\rho(f) : f \in \mathcal{F}\}$  is bounded in a neighborhood of each point  $z \in \Omega$ .*



*Proof.* " $\Leftarrow$ " Arzela-Ascoli Theorem 6.6 implies that it suffices to prove  $\mathcal{F}$  is equicontinuous on every compact set in  $\Omega$ .

Define the **sperical length** of a path  $\gamma$  in  $\hat{C}$  is defined by  $\Lambda(\gamma) = \int_{\gamma} \frac{2|dz|}{1 + |z|^2}$ .

The **sperical distance** between  $z_1, z_2 \in \hat{C}$  is  $d_S(z_1, z_2) = \inf_{\gamma} \Lambda(\gamma)$ , where infimum is taken over all paths connecting  $z_1$  and  $z_2$ .

$d_s$  and  $d$  are equivalent, i.e.  $C_1 d(z_1, z_2) \leq d_S(z_1, z_2) \leq C_2 d(z_1, z_2)$  for some  $z_1, z_2 \in \hat{C}$ ,  $0 < C_1 < C_2 < +\infty$ .

To prove the equicontinuity in a compact set  $E \subset \Omega$ , it is proved that  $\mathcal{F}$  is equicontinuous on disks  $D$  w.r.t.  $\bar{D} \subset \Omega$ .  $\forall z_1, z_2 \in D$ ,  $\gamma(t) = tz_1 + (1 - t)z_2$ ,  $t \in [0, 1]$ ,

$$\begin{aligned} d_S(f(z_1), f(z_2)) &\leq \int_{f(\gamma)} \frac{2|d\omega|}{1 + |\omega|^2} \\ &\stackrel{\omega=f(z)}{=} \int_{\gamma} \frac{2|f'(z)||dz|}{1 + |f(z)|^2} \\ &= \int_{\gamma} \rho(f)(z) \cdot |dz| \leq M \int_{\gamma} |dz| = M|z - z_0| \end{aligned}$$

" $\Rightarrow$ ": Suppose  $\mathcal{F}$  is normal but  $\{\rho(f) : f \in \mathcal{F}\}$  is not bounded on a compact set  $E$ , from which  $\exists f_n \in \mathcal{F}$  such that  $\sup_{z \in E} \rho(f_n)(z) > n$  for  $\forall n \in \mathbb{N}$  follows.

We may assume  $f_n \rightrightarrows f$  on every compact set pf  $\Omega$ . Then lemma 6.9 implies  $\forall z_0 \in E$ , we can find a small disk in  $\Omega$  s.t. either  $f$  or  $\frac{1}{f}$  is analytic in this disk.

If  $f$  is analytic, then it is bounded in the closed disk  $\Rightarrow f_n$  has no poles in this disk for all large  $n \Rightarrow \rho(f_n) \rightrightarrows \rho(f)$  on a slightly smaller disk by Weierstrass theorem 5.1  $\Rightarrow \rho(f)$  is continuous in this smaller disk  $\Rightarrow \rho(f_n)$  is bounded on the smaller disk.

If  $\frac{1}{f}$  is analytic, the same proof applies to  $\rho(\frac{1}{f_n})$  which is equal to  $\rho(f_n)$ .  $\square$

## 6.2 The Riemann Mapping Theorem

### 6.2.1 Statement and proof

**Theorem 6.12** (Riemann Mapping Theorem). *Given any simply connected region  $\Omega$  which is not the whole plane, and a point  $z_0 \in \Omega$ , there exists a unique analytic function  $f$  in  $\Omega$ , normalized by the condition  $f(z_0) = 0$ ,  $f'(z_0) > 0$  s.t.  $f$  defines a one-to-one mapping of  $\Omega$  onto the unit disk  $\mathbb{D} = \{\omega \in \mathbb{C} : |\omega| < 1\}$ .*

*Proof.* Uniqueness: Suppose there are two such functions  $f_1$  and  $f_2$ . Then  $f_1 \circ f_2^{-1} : \mathbb{D} \rightarrow \mathbb{D}$  is 1-1 and onto. By Schwarz lemma 4.48,  $f_1 \circ f_2^{-1} = e^{i\varphi} \frac{z - \alpha}{1 - \bar{\alpha}z}$  for some  $\alpha \in \mathbb{D}$ ,  $\varphi \in \mathbb{R}$ .  $f_1 \circ f_2^{-1}(0) = 0$ ,  $(f_1 \circ f_2^{-1})'(0) = f_1'(f_2^{-1}(0))(f_2^{-1})^{-1}(0) = f_1'(z_0) \frac{1}{f_2'(z_0)} > 0 \Rightarrow f_1 \circ f_2^{-1}(z) = z, \forall z \in \mathbb{D} \Rightarrow f_1(z) = f_2(z), \forall z \in \mathbb{D}$ .

Existence:

**Lemma 6.13.** *If  $\Omega$  is simply connected and  $\Omega \neq \mathbb{C}$ ,  $\exists$  1-1 analytic function  $h : \Omega \rightarrow \mathbb{C}$  s.t.  $h(\Omega)$  does not intersect a disk  $B(\omega_0, \delta)$  for some  $\omega_0 \in \mathbb{C}$  and  $\delta > 0$ .*

*Proof of Lemma.*  $\exists a \in \mathbb{C} \setminus \Omega$ .  $\Omega$  is simply connected. Corollary 4.55  $\Rightarrow$  We can define an analytic function  $h$  on  $\Omega$  s.t.  $h^2(z) = z - a$ . If  $h(z_1) = \pm h(z_2)$  for some  $z_1, z_2 \in \Omega$ , then  $z_1 - a = z_2 - a \Rightarrow z_1 = z_2$ . The open mapping theorem 4.42  $\Rightarrow h(\Omega)$  contains a disk  $B(h(z_0), \delta) \Rightarrow h(\Omega) \cap B(-h(z_0), \delta) = \emptyset \Rightarrow |h(z) + h(z_0)| > \delta, \forall z \in \Omega$ . In particular,  $2|h(z_0)| > \delta$ .  $\square$

Let  $\mathcal{F}$  be the family of functions with the following properties:

- ①  $g$  is analytic and 1-1 in  $\Omega$
- ②  $|g(z)| \leq 1$  on  $\Omega$
- ③  $g(z_0) = 0$  and  $g'(z_0) > 0$ .

We first prove  $\mathcal{F}$  is not empty. Let

$$g_0(z) = \frac{\delta}{4} \cdot \frac{|h'(z_0)|}{|h(z_0)|^2} \cdot \frac{h(z_0)}{h'(z_0)} \cdot \frac{h(z) - h(z_0)}{h(z) + h(z_0)}, \quad z \in \Omega$$

where  $\delta$  and  $h$  are defined in the previous lemma.

$$h \text{ is 1-1} \Rightarrow g_0 \text{ is 1-1. } g_0(z_0) = 0 \text{ and } g'_0(z_0) = \frac{\delta}{8} \cdot \frac{|h'(z_0)|}{|h(z_0)|^2} > 0.$$

$$\begin{aligned} |g_0(z)| &= \frac{\delta}{4} \cdot \frac{1}{|h(z_0)|} \cdot \left| \frac{h(z) - h(z_0)}{h(z) + h(z_0)} \right| \\ &= \frac{\delta}{4} \left| \frac{1}{h(z_0)} - \frac{2}{h(z) + h(z_0)} \right| \\ &\leq \frac{\delta}{4} \left[ \frac{1}{|h(z_0)|} + \frac{2}{|h(z) + h(z_0)|} \right] \\ &\leq 1 \end{aligned}$$

We next prove that  $\exists f \in \mathcal{F}$  with maximal derivative at  $z_0$ . Cauchy's estimate implies  $\forall r > 0$  with  $B(z_0, r) \subset \Omega$ ,  $\forall g \in \mathcal{F}$ ,

$$|g'(z_0)| = \left| \frac{1}{2\pi i} \int_{|z-z_0|=r} \frac{g(\zeta)}{(\zeta - z_0)} d\zeta \right| \leq \frac{1}{2\pi} \cdot \frac{1}{r^2} \cdot 2\pi r \quad (6.7)$$

So  $\{|g'(z_0)| : g \in \mathcal{F}\}$  is bounded, and has a supremum  $B = \sup_{g \in \mathcal{F}} |g'(z_0)|$ .

$\exists$  a sequence  $\{g_n\}_{n \in \mathbb{N}}$  in  $\mathcal{F}$  s.t.  $g'_n(z_0) \rightarrow B$  as  $n \rightarrow \infty$ .  $|g_n| \leq 1$  on  $\Omega$  so by Montel's theorem 6.8, there exists a subsequence  $\{g_{n_k}\}_{k \in \mathbb{N}}$  of  $\{g_n\}_{n \in \mathbb{N}}$  s.t.  $g_{n_k}$  converges uniformly to  $f$  on every compact subset of  $\Omega$ . Weierstrass theorem 5.1 implies  $f$  is analytic in  $\Omega$ . And  $f(z_0) = \lim_{k \rightarrow \infty} g_{n_k}(z_0) = 0$ ,  $|f'(z_0)| = \lim_{k \rightarrow \infty} |g'_{n_k}(z_0)| = B > 0 \Rightarrow f$  is not a constant since  $|f'(z_0)| = B > 0$ .

$\forall z_1 \in \Omega$ , define  $\tilde{g}_{n_k}(z) = g_{n_k}(z) - g_{n_k}(z_1)$ ,  $\forall z \in \Omega$ .  $\tilde{g}_{n_k}(z) \neq 0$  for  $\forall z \in \Omega \setminus \{z_1\}$ . Then by Hurwitz's theorem 5.3,  $\tilde{f}(z) = f(z) - f(z_1) \neq 0$  for  $\forall z \in \Omega \setminus \{z_1\}$  since  $f$  is not constant. Then  $f(z) \neq f(z_1)$  for  $\forall z \neq z_1 \Rightarrow f$  is 1-1 on  $\Omega$ .

We finally prove that  $f \in \mathcal{F}$ .

If  $\exists \omega_0 \in \mathbb{D}$  s.t.  $\omega_0 \notin f(\Omega)$ . As before, we can define an analytic function  $F$  on  $\Omega$  s.t.

$$F^2(z) = \frac{f(z) - \omega_0}{1 - \overline{\omega_0}f(z)} \quad (6.8)$$

It is clear that  $F$  is 1-1 and satisfies  $|F(z)| \leq 1$  for  $\forall z \in \Omega$ .  $F$  can be normalized as follows:  $G(z) = \frac{|F'(z_0)|}{F'(z_0)} \cdot \frac{F(z) - F(z_0)}{1 - \overline{F(z_0)}F(z)}$ . Then  $G$  is 1-1,  $|G(z)| \leq 1$ ,  $\forall z \in \Omega$ , and  $G(z_0) = 0$ . Moreover,

$$G'(z_0) = \frac{|F'(z_0)|}{1 - |F(z_0)|^2} = \frac{|f'(z_0)|[1 - |\omega_0|^2]}{2\sqrt{|\omega_0|}[1 - |\omega_0|]} = \frac{1 + |\omega_0|}{2\sqrt{|\omega_0|}} \cdot |f'(z_0)| > |f'(z_0)| = B \quad (6.9)$$

which causes a contradiction.

So  $f(\Omega) = \mathbb{D}$

□

# Index

- $\Gamma(z)$ , 80
- algebraic order, 38
- Apollonius, 17
- arc, 10
- area, 12
- canonical product, 78
- Cauchy principle value of the integral, 55
- Cauchy's estimate, 30
- Cauchy's integral formula, 28
- chain, 44
  - identical, 44
  - integral, 44
- change of parameter, 10
- circular net, 17
- conformal, 12
- conjugate differential of  $du$ , 58
- conjugate harmonic function of  $u$ , 5
- cross ratio, 13
- curve, 10
  - closed curve, 10
  - Jordan curve, 10
  - simple, 10
- cycle, 44
- equicontinuous, 91
- essential isolated singularity, 38
- exponential function, 8
- finite genus, 78
- genus, 78
- harmonic, 5, 57
- homologous to zero, 45
- homothetic transformation, 13
- index of the point  $z$ , 26
- infinite product, 75
  - absolutely convergent, 75
- integral, 19
  - $\bar{z}$ , 20
  - arc length, 21
- inversion, 13
- isolated singularity, 36
- Jacobi theta series, 86
- Laplace equation, 5
- Laurent series, 70
- left, 16
- length, 12, 21
- linear fraction, 6

locally bounded, [96](#)  
 logarithmic function, [8](#)  
 meromorphic function, [37](#)  
 Möbius transformation, [6](#), [12](#)  
 normal, [91](#)  
 order, [85](#)  
 order of a pole, [6](#)  
 order of the pole, [36](#)  
 order of the rational function, [6](#)  
 parallel translation, [13](#)  
 partial fractions, [6](#)  
 Poisson integral , [63](#)  
 Poisson-Jensen formula, [85](#)  
 pole, [36](#)  
 poles, [6](#)  
 rectifiable, [22](#)  
 reflection, [14](#)  
 region, [9](#)  
 relatively compact, [91](#)  
 removable singularities, [32](#)  
 residue, [47](#)  
 reversible , [10](#)  
 right, [16](#)  
 rotation, [13](#)  
 Schwarz Formula, [62](#)  
 simply connected, [44](#)  
 singular part, [7](#)  
 singular point, [7](#)  
 spherical distance, [97](#)  
 spherical length, [97](#)  
 Steiner circles, [17](#)  
 symmetric, [14](#)  
 symmetric w.r.t  $C$  through  $z_1, z_2, z_3$ , [14](#)  
 symmetrized zeta function, [86](#)  
 Taylor's Theorem, [34](#)  
 totally bounded , [10](#)  
 trigonometric function, [8](#)  
 winding number, [26](#)  
 zero of order  $N$ , [36](#)

List of Theorems

2.3 Theorem (Fundamental Theorem of Algebra) . . . . . 5

2.4 Theorem (Gauss-Lucus theorem) . . . . . 5

2.5 Proposition . . . . . 6

2.6 Theorem . . . . . 6

2.9 Theorem (Abel’s theorem) . . . . . 8

3.1 Theorem . . . . . 9

3.3 Theorem . . . . . 10

3.4 Theorem . . . . . 10

3.5 Theorem . . . . . 10

3.6 Theorem . . . . . 10

3.7 Theorem . . . . . 11

3.9 Proposition . . . . . 13

3.11 Theorem . . . . . 13

3.13 Theorem . . . . . 14

3.15 Theorem . . . . . 14

3.17 Theorem (The Symmetric principle) . . . . . 15

3.20 Theorem . . . . . 17

4.1 Proposition . . . . . 20

4.4 Theorem . . . . . 22

4.5 Theorem (Fundamental theorem of Calculus for integrals on  $\mathbb{C}$ ) . . 22

4.8 Theorem (Cauchy’s theorem for a rectangle) . . . . . 23

4.9 Theorem (stronger version of Cauchy’s theorem for a rectangle) . . 24

4.10 Theorem (Cauchy’s Theorem for a disk) . . . . . 24

4.11 Theorem (stronger version of Cauchy’s Theorem for a disk) . . . . 25

4.13 Theorem . . . . . 26

4.16	Theorem (Cauch's integral formula)	27
4.18	Theorem (The mean value property for analytic functions)	28
4.20	Theorem	29
4.21	Theorem (Morera's Theorem)	30
4.22	Theorem (Liouville's Theorem)	30
4.23	Theorem (Fundamental Theorem for Algebra)	31
4.24	Theorem (Power series)	31
4.25	Theorem (Riemann's Removable Singularities Theorem)	32
4.26	Theorem (Taylor's Theorem)	34
4.27	Theorem	35
4.28	Theorem (Identity Theorem)	36
4.33	Theorem	37
4.36	Theorem (Weierstrass)	38
4.38	Theorem (The Argument Principle)	39
4.41	Theorem	41
4.45	Theorem (The maximum principle)	43
4.46	Theorem (The maximum principle)	43
4.48	Theorem (Schwarz Lemma)	43
4.51	Theorem	44
4.52	Theorem (General form of Cauchy's theorem)	45
4.56	Theorem (The Residue Theorem)	48
4.59	Theorem (The Argument Principle)	50
4.60	Theorem (Rouché's Theorem)	51
4.61	Theorem (The Argument Principle)	51
4.67	Theorem	58
4.70	Theorem (Mean-value Property)	59
4.71	Theorem	59



4.72	Theorem (Maximal Principle of Harmonic Function) . . . . .	60
4.73	Theorem . . . . .	60
4.75	Theorem (Poisson's formula) . . . . .	61
4.78	Theorem (Schwarz's theorem) . . . . .	63
4.79	Theorem (The reflection principle) . . . . .	64
5.1	Theorem (Weierstrass's Theorem) . . . . .	67
5.3	Theorem (Hurwitz's Theorem) . . . . .	68
5.4	Theorem . . . . .	68
5.6	Theorem (Laurent Theorem) . . . . .	70
5.7	Theorem . . . . .	71
5.8	Theorem (Mittag-Leffler Theorem) . . . . .	72
5.12	Theorem . . . . .	75
5.13	Theorem . . . . .	75
5.14	Theorem (Weierstrass factorization theorem) . . . . .	76
5.19	Proposition . . . . .	80
5.20	Theorem (Jensen's formula) . . . . .	83
5.23	Theorem (Hadamard Theorem) . . . . .	85
5.24	Theorem . . . . .	85
6.4	Theorem . . . . .	92
6.5	Theorem . . . . .	92
6.6	Theorem (Arzela-Ascoli Theorem) . . . . .	93
6.8	Theorem (Montel's Theorem) . . . . .	95
6.11	Theorem (Marty's Theorem) . . . . .	96
6.12	Theorem (Riemann Mapping Theorem) . . . . .	98